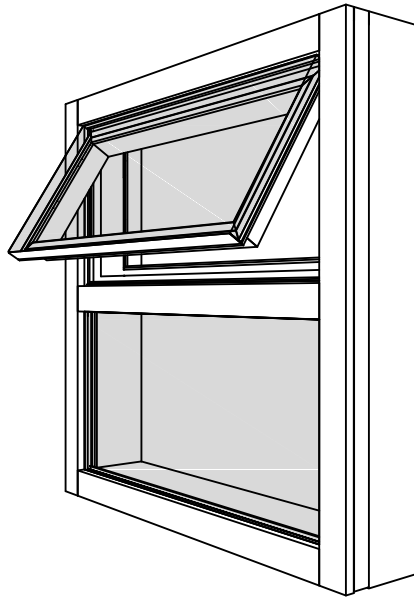


575 SERIES



KEY FEATURES

- Zero sightline
- Projecting outward
- Accommodates 1" double or 1 3/4" triple glazing units
- Compatible with Windspec windows and curtain wall
- Adaptable for SSG applications

PERFORMANCE

- U value as low as 0.35 (1" glazing)
- U value as low as 0.26 (1 3/4" glazing)
- NAFS: Class CW-PG70-AP
- A440 - A3, C5, B7



WINDSPEC INC.

MANUFACTURERS OF HIGH PERFORMANCE 'WINDSPEC' WINDOWS
ALUMINUM ENTRANCE SYSTEMS AND ARCHITECTURAL PANELS
1310 CREDITSTONE RD, CONCORD, ONTARIO L4K 5T7
Telephone (905) 738 -8311 Fax (905) 738 - 6188

JANUARY 2016

575 SERIES

TABLE OF CONTENTS

575 VENT IN HTP 5500 C.W. DETAILS _____	003
575 VENT IN HTP 5500 SILICON GLAZING DETAILS _____	005
575 VENT IN FIXED GLAZING DETAILS _____	007
TRIPLE GLAZED 575 VENT IN TRIPLE GLAZED HTP 5500 CURTAIN WALL DETAILS _____	008
TRIPLE GLAZED 575 VENT IN TRIPLE GLAZED SSG HTP 5500 DETAILS _____	010
TRIPLE GLAZED 575 VENT IN TRIPLE GLAZED FIXED WINDOW DETAILS _____	012
CASEMENT & AWNING SIZING CHARTS _____	013
THERMAL CHARTS _____	014



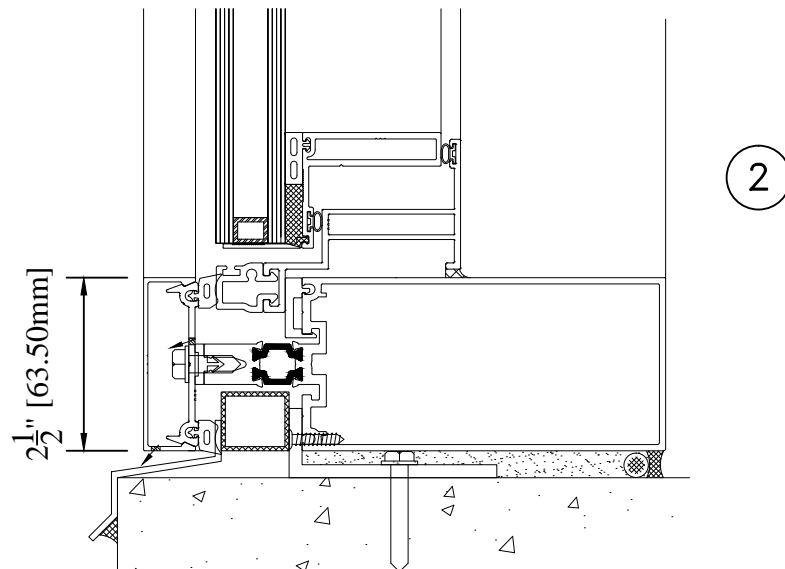
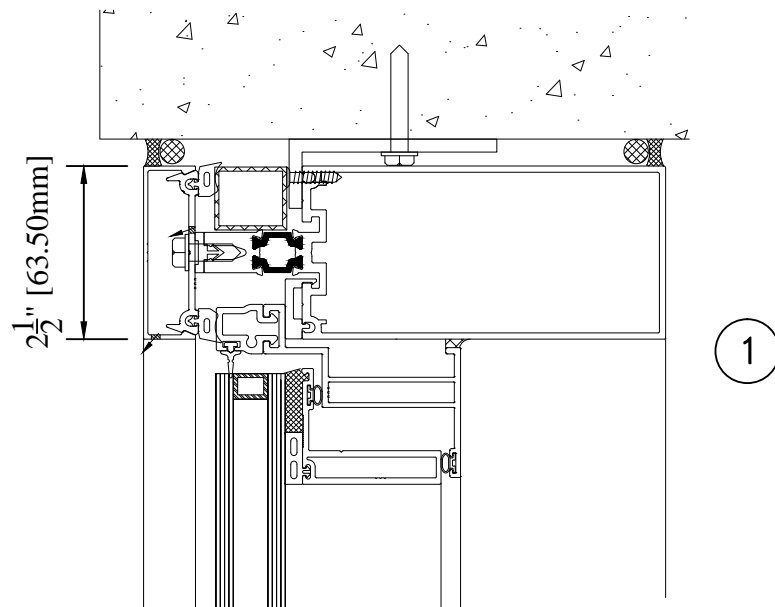
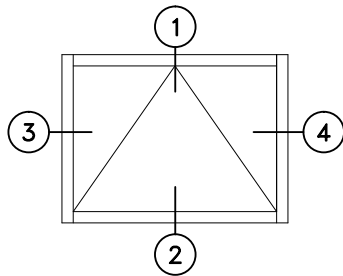
WINDSPEC INC.

MANUFACTURERS OF HIGH PERFORMANCE 'WINDSPEC' WINDOWS
ALUMINUM ENTRANCE SYSTEMS AND ARCHITECTURAL PANELS
1310 CREDITSTONE RD, CONCORD, ONTARIO L4K 5T7
Telephone (905) 738 -8311 Fax (905) 738 - 6188

JANUARY 2016

575 SERIES

575 VENT IN HTP 5500 C.W. DETAILS

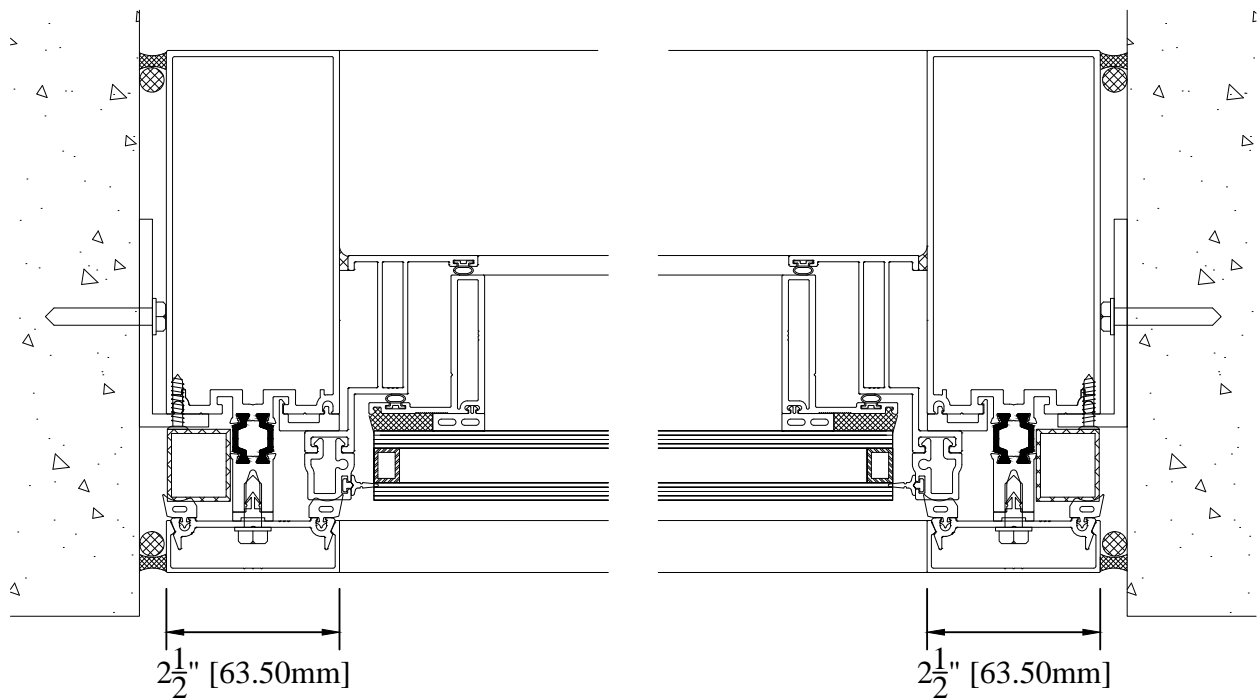


WINDSPEC INC.
MANUFACTURERS OF HIGH PERFORMANCE 'WINDSPEC' WINDOWS
ALUMINUM ENTRANCE SYSTEMS AND ARCHITECTURAL PANELS
1310 CREDITSTONE RD, CONCORD, ONTARIO L4K 5T7
Telephone (905) 738 -8311 Fax (905) 738 - 6188

JANUARY 2016

575 SERIES

575 VENT IN HTP 5500 C.W. DETAILS



3

4

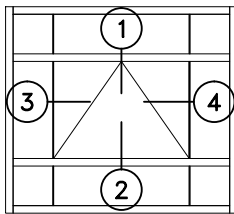


WINDSPEC INC.
MANUFACTURERS OF HIGH PERFORMANCE 'WINDSPEC' WINDOWS
ALUMINUM ENTRANCE SYSTEMS AND ARCHITECTURAL PANELS
1310 CREDITSTONE RD, CONCORD, ONTARIO L4K 5T7
Telephone (905) 738-8311 Fax (905) 738-6188

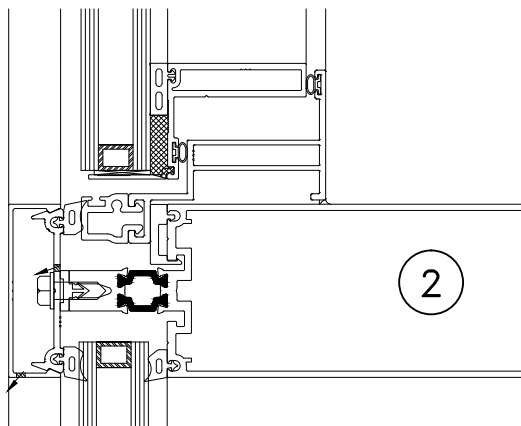
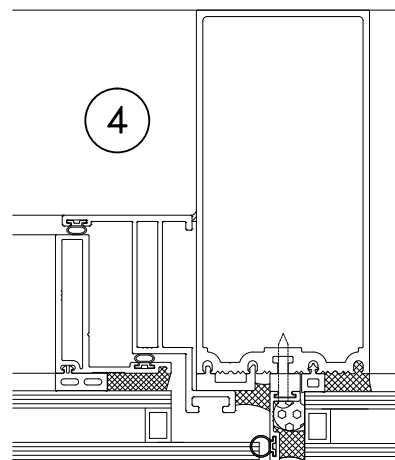
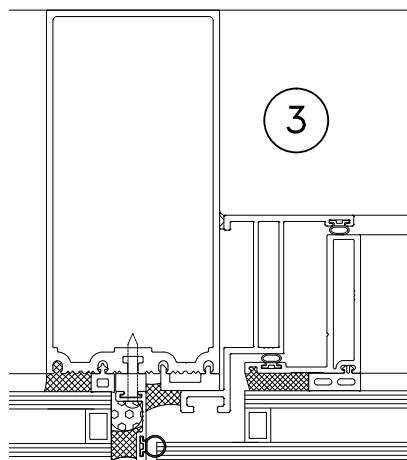
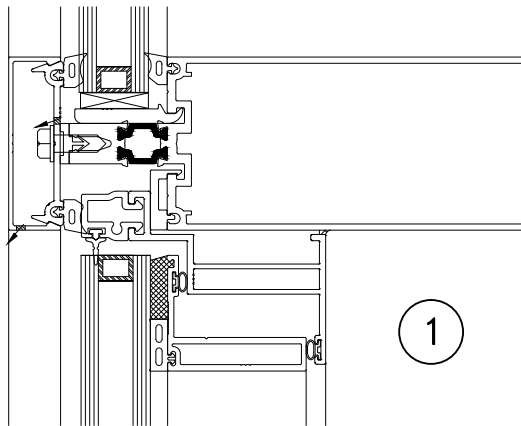
JANUARY 2016

575 SERIES

575 VENT IN HTP 5500 SILICON GLAZING DETAILS



SSG VERTICAL
ONLY



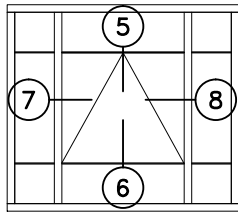
WINDSPEC INC.

MANUFACTURERS OF HIGH PERFORMANCE 'WINDSPEC' WINDOWS
ALUMINUM ENTRANCE SYSTEMS AND ARCHITECTURAL PANELS
1310 CREDITSTONE RD, CONCORD, ONTARIO L4K 5T7
Telephone (905) 738 -8311 Fax (905) 738 - 6188

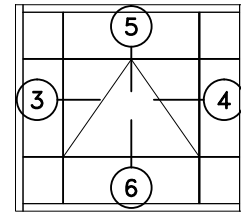
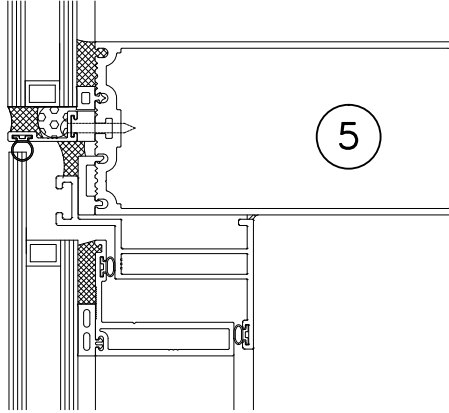
JANUARY 2016

575 SERIES

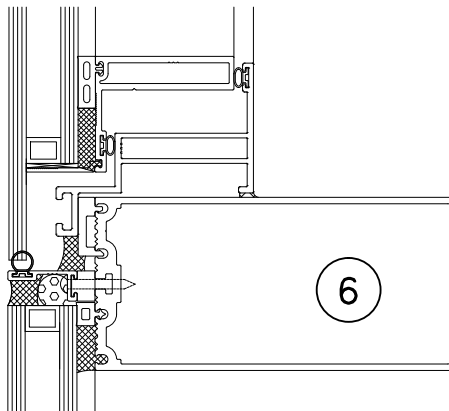
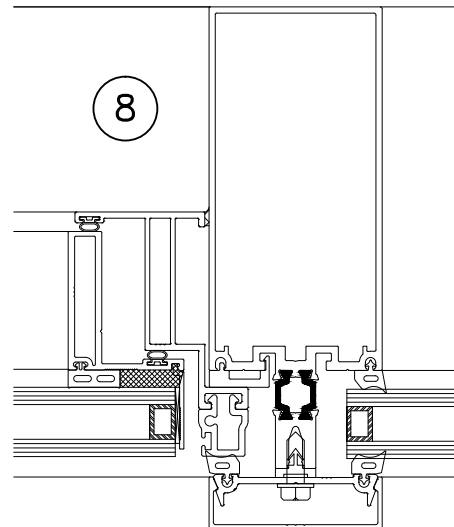
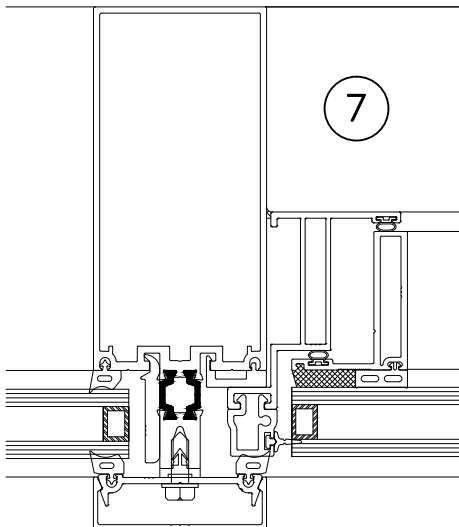
575 VENT IN HTP 5500 SILICON GLAZING DETAILS



SSG HORIZONTAL
ONLY



4 SIDED SSG



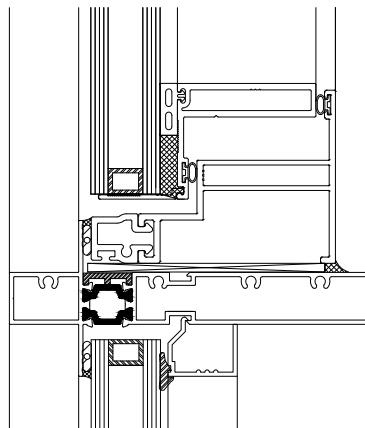
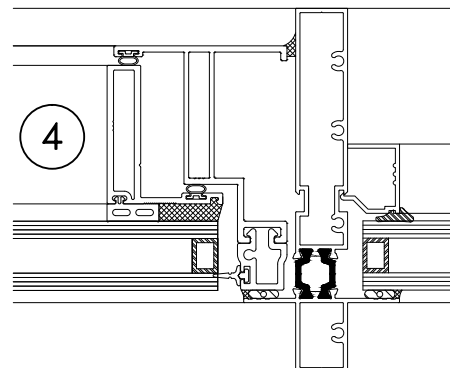
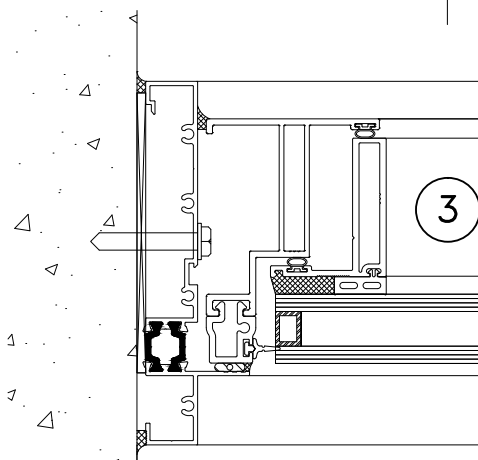
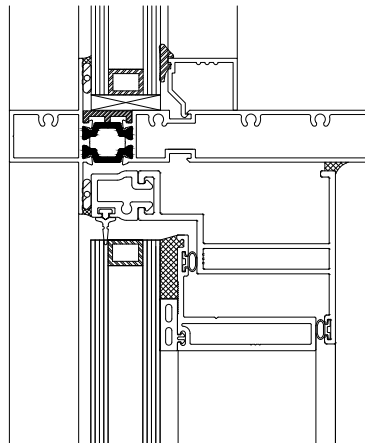
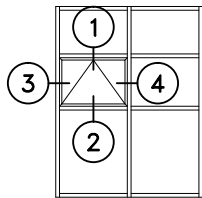
WINDSPEC INC.

MANUFACTURERS OF HIGH PERFORMANCE 'WINDSPEC' WINDOWS
ALUMINUM ENTRANCE SYSTEMS AND ARCHITECTURAL PANELS
1310 CREDITSTONE RD, CONCORD, ONTARIO L4K 5T7
Telephone (905) 738 -8311 Fax (905) 738 - 6188

JANUARY 2016

575 SERIES

575 VENT IN FIXED GLAZING DETAILS

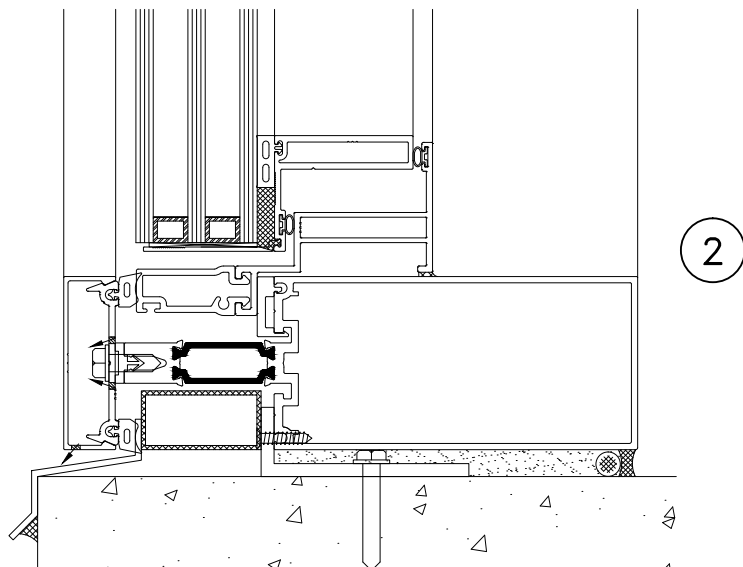
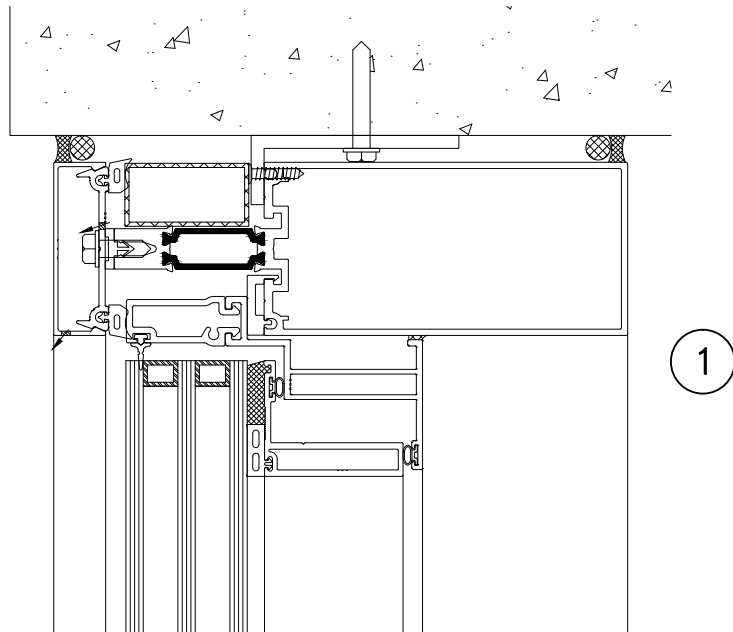
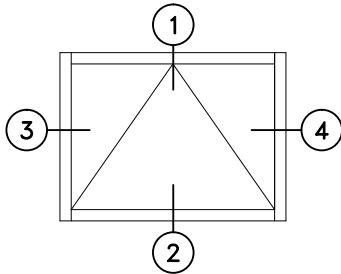


WINDSPEC INC.
MANUFACTURERS OF HIGH PERFORMANCE 'WINDSPEC' WINDOWS
ALUMINUM ENTRANCE SYSTEMS AND ARCHITECTURAL PANELS
1310 CREDITSTONE RD, CONCORD, ONTARIO L4K 5T7
Telephone (905) 738 -8311 Fax (905) 738 - 6188

JANUARY 2016

575 SERIES

TRIPLE GL. 575 VENT IN TRIPLE GL. HTP 5500 C.W.

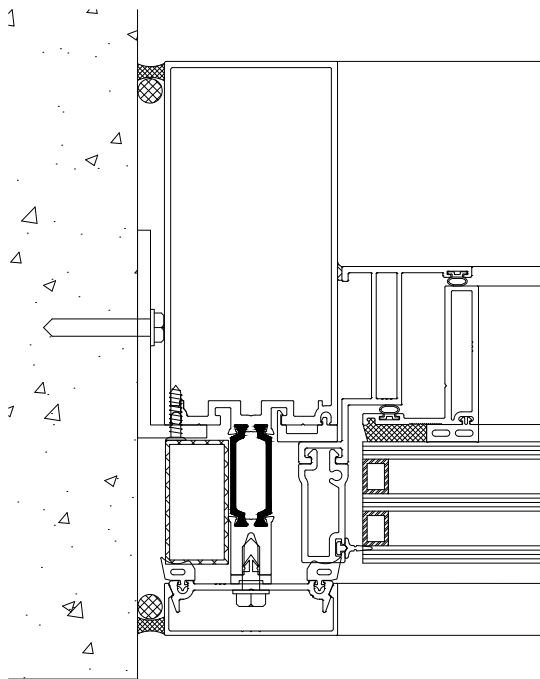


WINDSPEC INC.
MANUFACTURERS OF HIGH PERFORMANCE 'WINDSPEC' WINDOWS
ALUMINUM ENTRANCE SYSTEMS AND ARCHITECTURAL PANELS
1310 CREDITSTONE RD, CONCORD, ONTARIO L4K 5T7
Telephone (905) 738 -8311 Fax (905) 738 - 6188

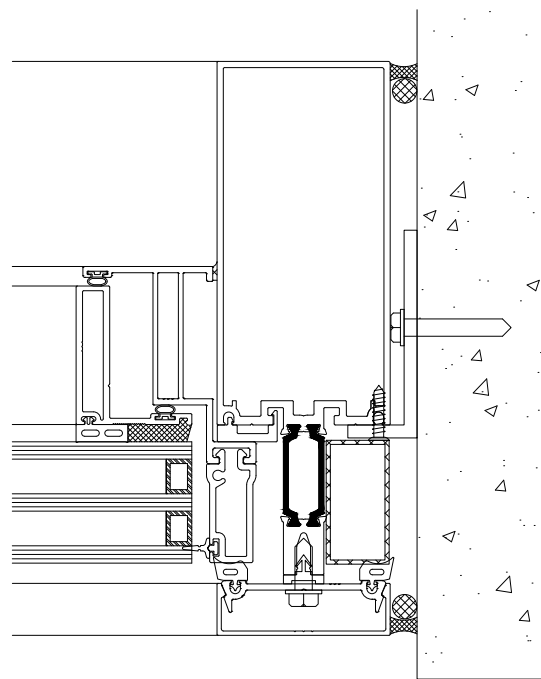
JANUARY 2016

575 SERIES

TRIPLE GL. 575 VENT IN TRIPLE GL. HTP 5500 C.W.



3



4



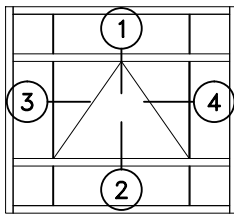
WINDSPEC INC.

MANUFACTURERS OF HIGH PERFORMANCE 'WINDSPEC' WINDOWS
ALUMINUM ENTRANCE SYSTEMS AND ARCHITECTURAL PANELS
1310 CREDITSTONE RD, CONCORD, ONTARIO L4K 5T7
Telephone (905) 738 -8311 Fax (905) 738 - 6188

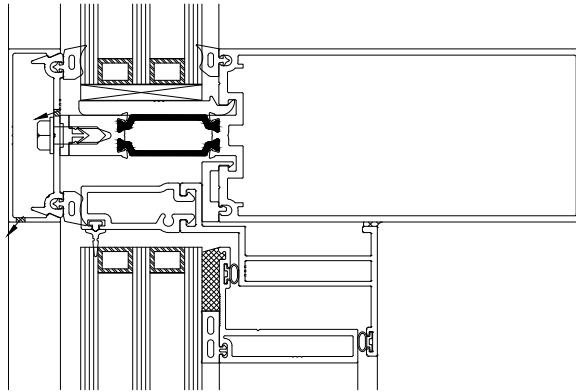
JANUARY 2016

575 SERIES

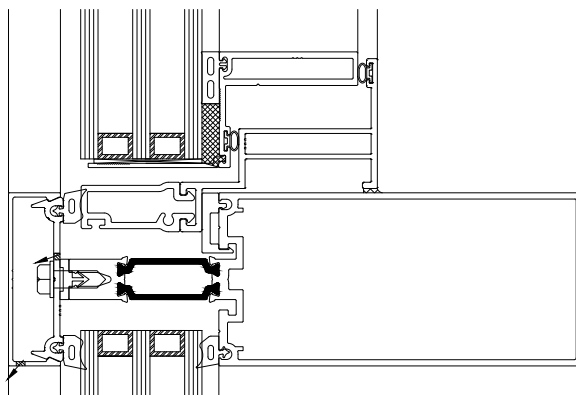
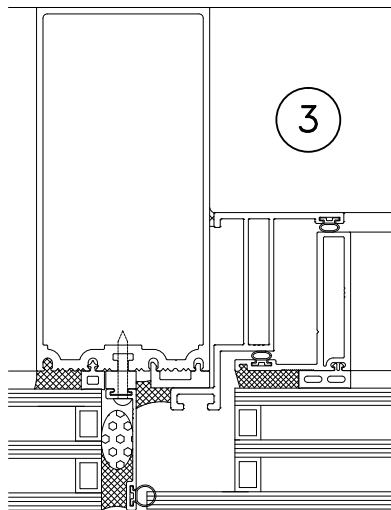
TRIPLE GL. 575 VENT IN TRIPLE GL. SSG HTP 5500 DETAILS



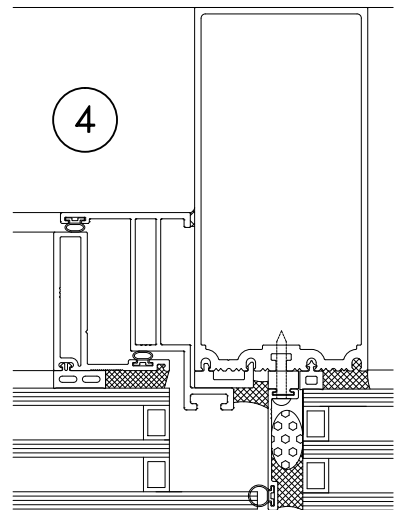
SSG VERTICAL
ONLY



1



2



4



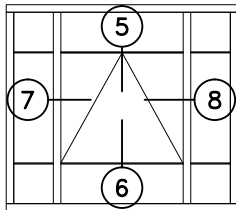
WINDSPEC INC.

MANUFACTURERS OF HIGH PERFORMANCE 'WINDSPEC' WINDOWS
ALUMINUM ENTRANCE SYSTEMS AND ARCHITECTURAL PANELS
1310 CREDITSTONE RD, CONCORD, ONTARIO L4K 5T7
Telephone (905) 738 -8311 Fax (905) 738 - 6188

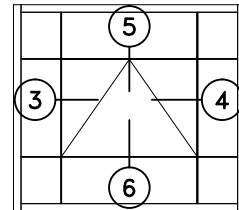
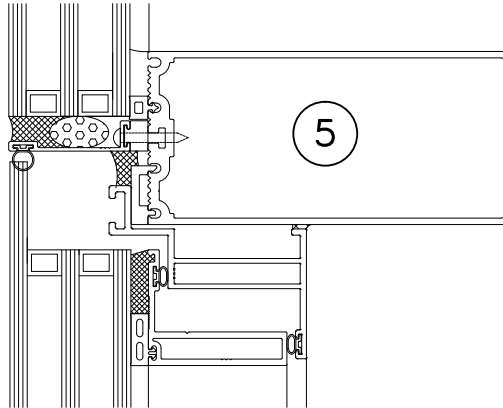
JANUARY 2016

575 SERIES

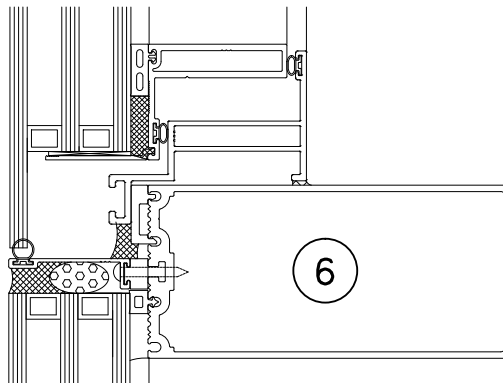
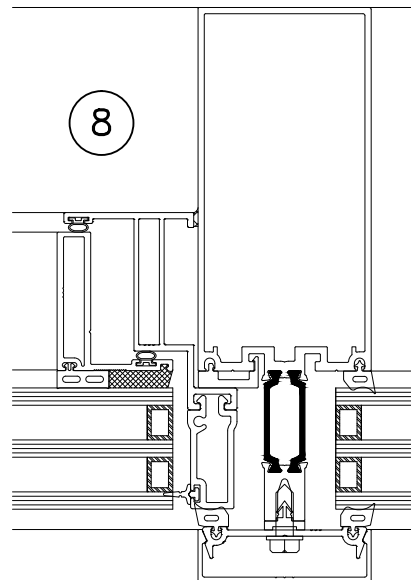
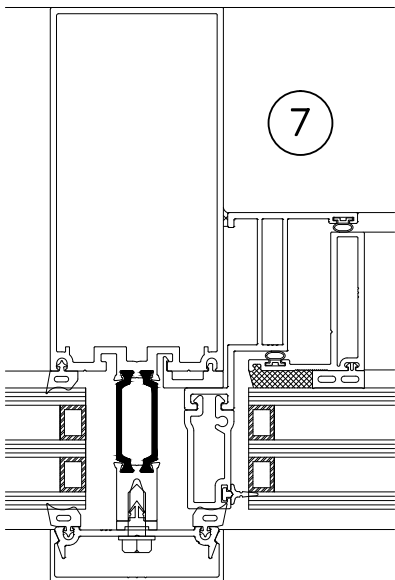
TRIPLE GL. 575 VENT IN TRIPLE GL. SSG HTP 5500 DETAILS



SSG HORIZONTAL
ONLY



4 SIDED SSG



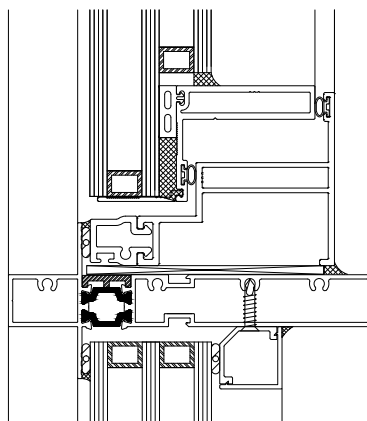
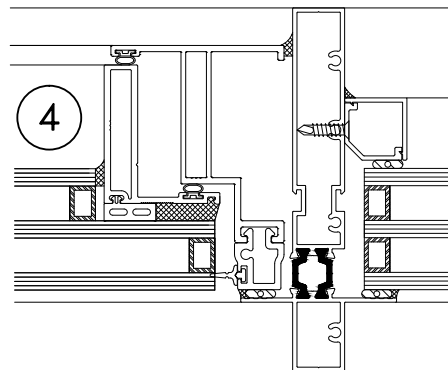
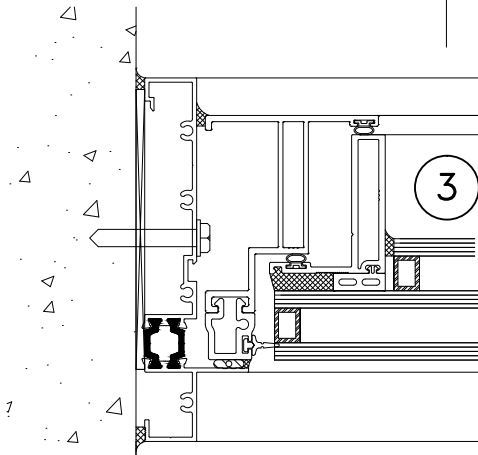
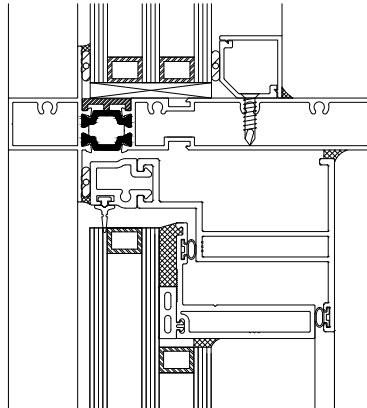
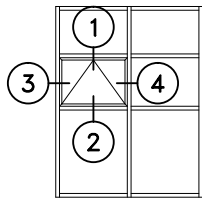
WINDSPEC INC.

MANUFACTURERS OF HIGH PERFORMANCE 'WINDSPEC' WINDOWS
ALUMINUM ENTRANCE SYSTEMS AND ARCHITECTURAL PANELS
1310 CREDITSTONE RD, CONCORD, ONTARIO L4K 5T7
Telephone (905) 738 -8311 Fax (905) 738 - 6188

JANUARY 2016

575 SERIES

TRIPLE GL. 575 VENT IN TRIPLE GL. FIXED GLAZING



WINDSPEC INC.

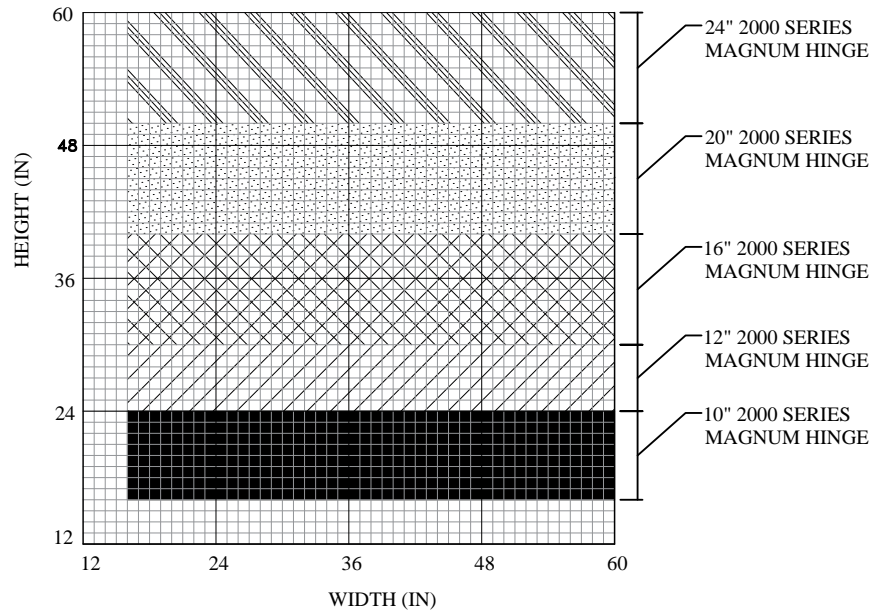
MANUFACTURERS OF HIGH PERFORMANCE 'WINDSPEC' WINDOWS
ALUMINUM ENTRANCE SYSTEMS AND ARCHITECTURAL PANELS
1310 CREDITSTONE RD, CONCORD, ONTARIO L4K 5T7
Telephone (905) 738 -8311 Fax (905) 738 - 6188

JANUARY 2016

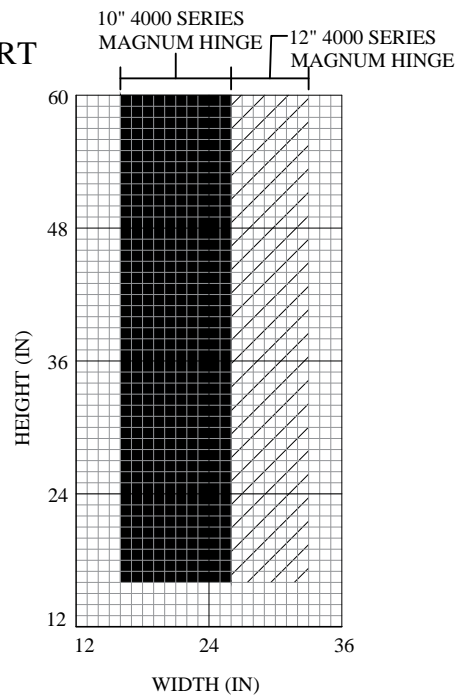
575 SERIES

CASEMENT & AWNING SIZING CHARTS

AWNING CHART



CASEMENT CHART



WINDSPEC INC.
MANUFACTURERS OF HIGH PERFORMANCE 'WINDSPEC' WINDOWS
ALUMINUM ENTRANCE SYSTEMS AND ARCHITECTURAL PANELS
1310 CREDITSTONE RD, CONCORD, ONTARIO L4K 5T7
Telephone (905) 738-8311 Fax (905) 738-6188

JANUARY 2016

575 SERIES

THERMAL CHARTS

U-cog	575 Casement with Double Glazing		
	Aluminum Spacer	Stainless Steel Spacer	Non-Metal Spacer
0.18	0.37	0.35	0.31
0.20	0.39	0.36	0.33
0.22	0.40	0.38	0.34
0.24	0.42	0.39	0.35
0.26	0.43	0.41	0.37
0.28	0.44	0.42	0.38
0.30	0.46	0.43	0.40
0.32	0.47	0.45	0.41
0.34	0.49	0.46	0.43
0.36	0.50	0.48	0.44
0.38	0.51	0.49	0.46
0.40	0.53	0.51	0.47
0.42	0.54	0.52	0.49
0.44	0.55	0.53	0.50
0.46	0.57	0.55	0.52
0.48	0.58	0.56	0.53

U-cog	575 Casement with Triple Glazing		
	Aluminum Spacer	Stainless Steel Spacer	Non-Metal Spacer
0.10	0.27	0.24	0.19
0.12	0.28	0.25	0.21
0.14	0.30	0.27	0.23
0.16	0.31	0.28	0.24
0.18	0.33	0.30	0.26
0.20	0.34	0.31	0.27
0.22	0.36	0.33	0.29
0.24	0.37	0.34	0.30
0.26	0.39	0.36	0.32
0.28	0.40	0.37	0.34
0.30	0.41	0.38	0.35

575 Casement (Dbl and Tpl Glazed)	
SHGC-cog	SHGC-Product
0.05	0.07
0.10	0.10
0.15	0.14
0.20	0.17
0.25	0.21
0.30	0.24
0.35	0.28
0.40	0.31
0.45	0.35
0.50	0.38
0.55	0.42
0.60	0.45
0.65	0.49
0.70	0.52
0.75	0.56



WINDSPEC INC.

MANUFACTURERS OF HIGH PERFORMANCE 'WINDSPEC' WINDOWS
ALUMINUM ENTRANCE SYSTEMS AND ARCHITECTURAL PANELS
1310 CREDITSTONE RD, CONCORD, ONTARIO L4K 5T7
Telephone (905) 738 -8311 Fax (905) 738 - 6188

JANUARY 2016