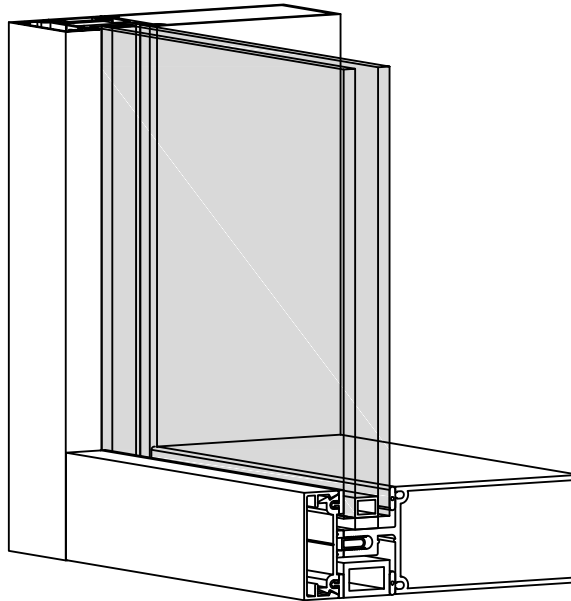


5400 C.W. SERIES



KEY FEATURES:

- 2" Slim sight line
- 2 $\frac{3}{4}$ ", 4", & 5" mullion depths
- Custom depths available upon request
- Stick-built system
- Dry or wet glaze options
- Standard 1" infill
- $\frac{1}{4}$ " infill with adaptors

PERFORMANCE:

- A440-A3,C5,B7
- NAFS.AW-PG70



WINDSPEC INC.

MANUFACTURERS OF HIGH PERFORMANCE 'WINDSPEC' WINDOWS
ALUMINUM ENTRANCE SYSTEMS AND ARCHITECTURAL PANELS
1310 CREDITSTONE RD, CONCORD, ONTARIO L4K 5T7
Telephone (905) 738 -8311 Fax (905) 738 - 6188

JANUARY 2016

5400 C.W. SERIES

TABLE OF CONTENTS

TYPICAL DETAILS	003
STANDARD DOOR IN 5400 C.W. TYPICAL DETAILS	005
HTP DOOR IN 5400 C.W. TYPICAL DETAILS	007
TYPICAL CORNER DETAILS	009
535 PROJECT OUT VENT IN 5400 C.W. DETAILS	010
535 PROJECT IN VENT IN 5400 C.W. DETAILS	011
575 PROJECT OUT VENT IN 5400 C.W. DETAILS	012
WIND LOAD CHARTS - 2 $\frac{3}{4}$ " C.W. BACK SECTION	013
WIND LOAD CHARTS - 4" C.W. BACK SECTION	014
WIND LOAD CHARTS - 5" C.W. BACK SECTION	015
PARTS LIST	016



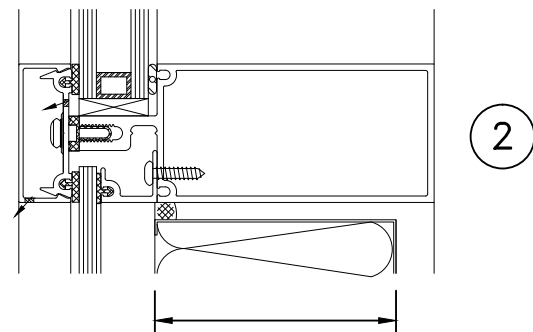
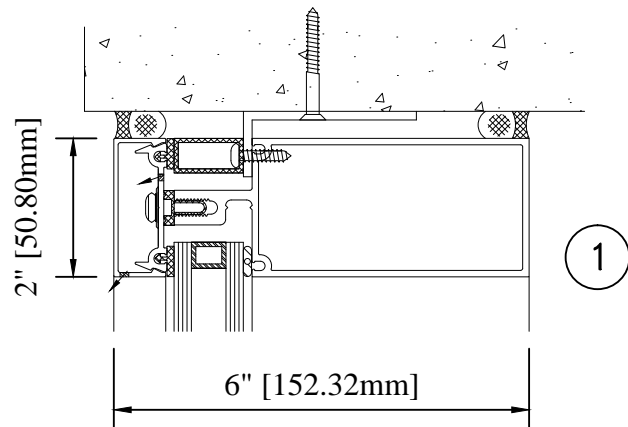
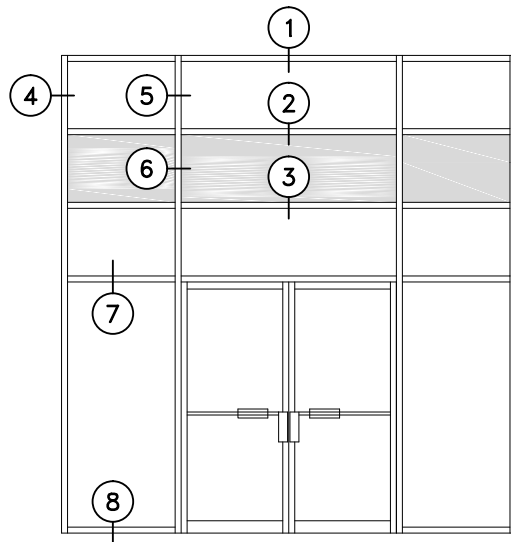
WINDSPEC INC.

MANUFACTURERS OF HIGH PERFORMANCE 'WINDSPEC' WINDOWS
ALUMINUM ENTRANCE SYSTEMS AND ARCHITECTURAL PANELS
1310 CREDITSTONE RD, CONCORD, ONTARIO L4K 5T7
Telephone (905) 738 -8311 Fax (905) 738 - 6188

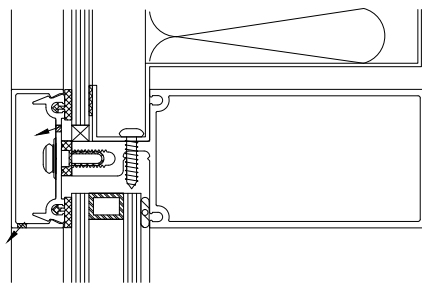
JANUARY 2016

5400 C.W. SERIES

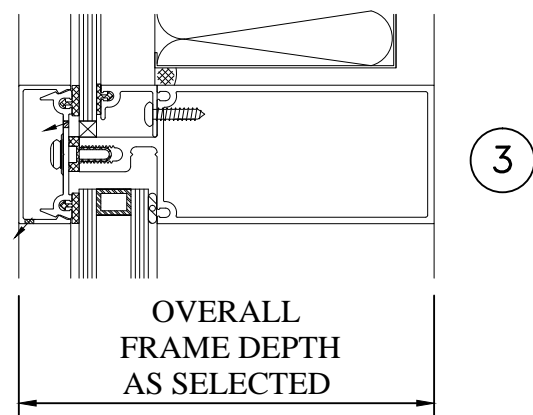
TYPICAL DETAILS



DEPTH OF BACK UP PANEL
(PER ARCHITECTURAL
SPEC. & DRAWINGS)



3a

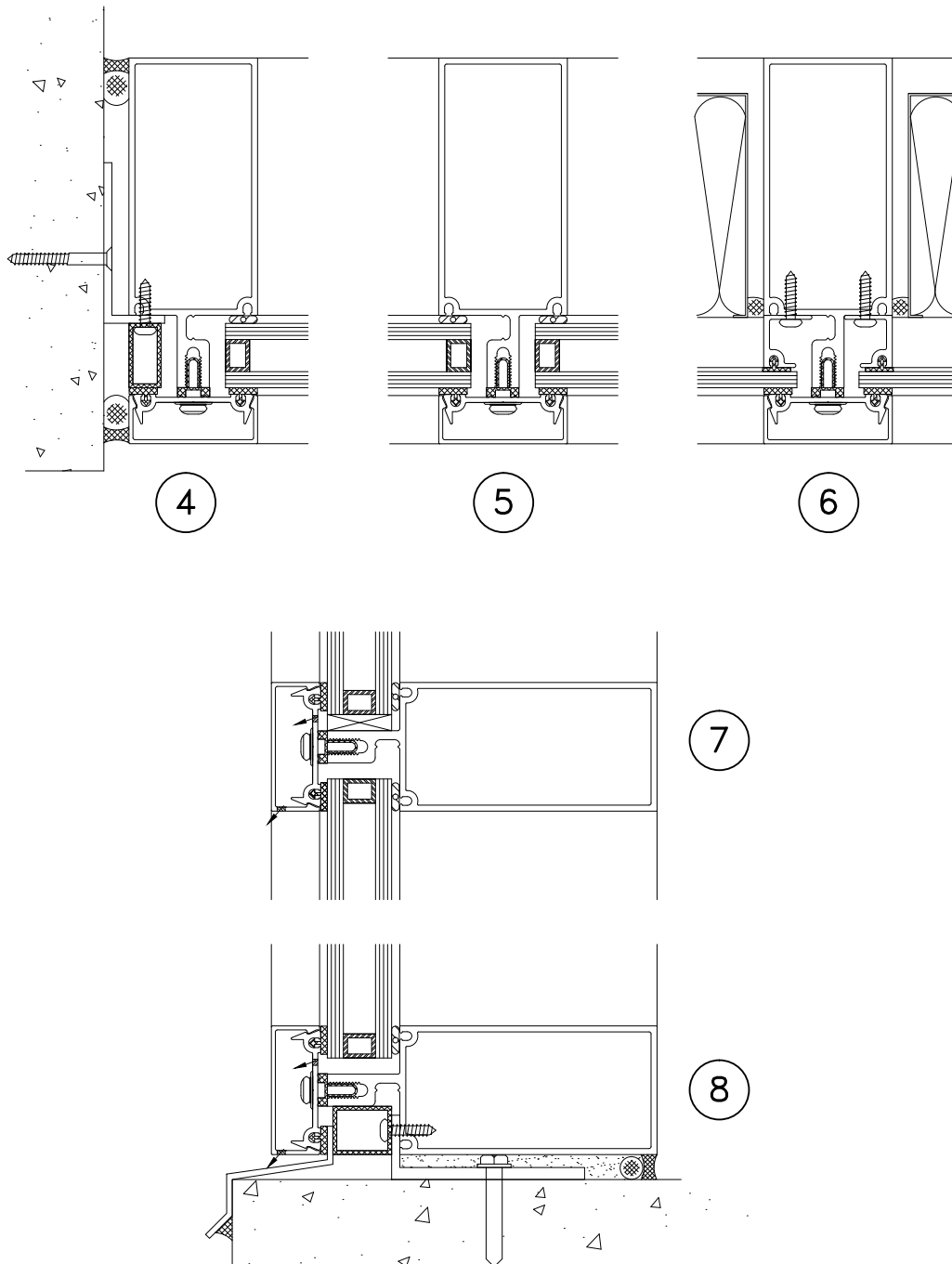


WINDSPEC INC.
MANUFACTURERS OF HIGH PERFORMANCE 'WINDSPEC' WINDOWS
ALUMINUM ENTRANCE SYSTEMS AND ARCHITECTURAL PANELS
1310 CREDITSTONE RD, CONCORD, ONTARIO L4K 5T7
Telephone (905) 738 -8311 Fax (905) 738 - 6188

JANUARY 2016

5400 C.W. SERIES

TYPICAL DETAILS

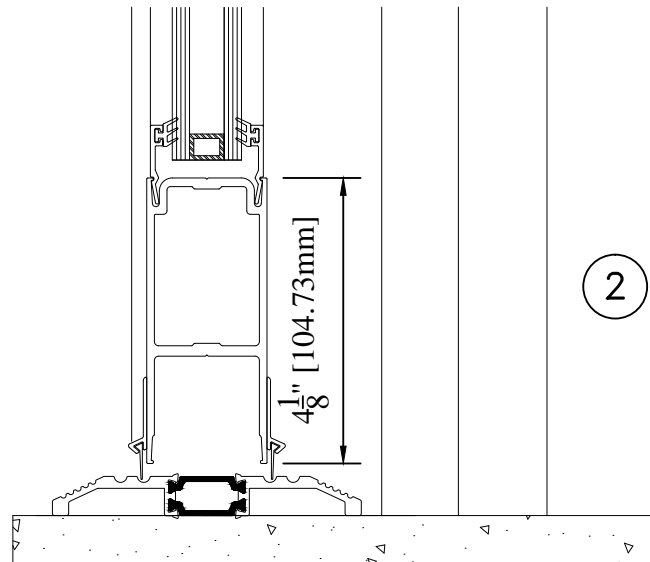
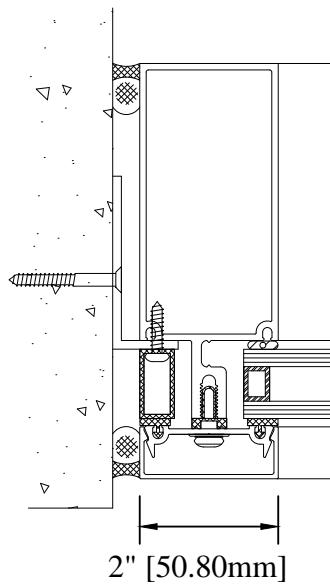
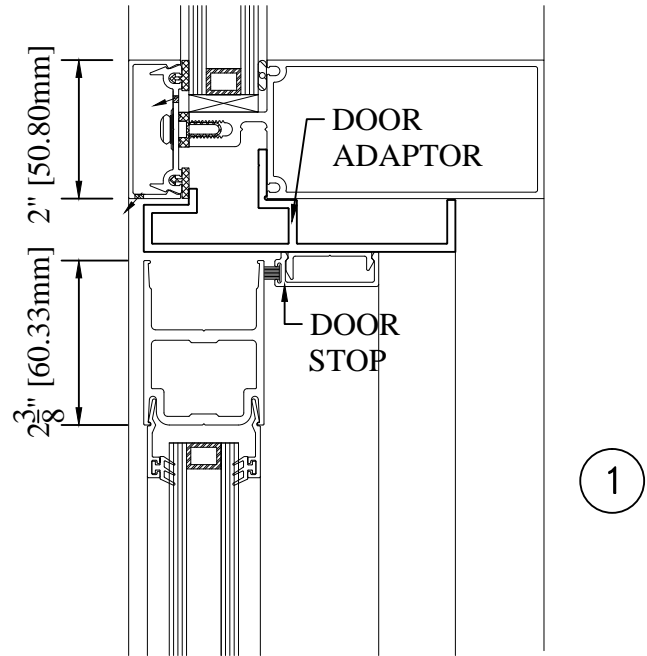
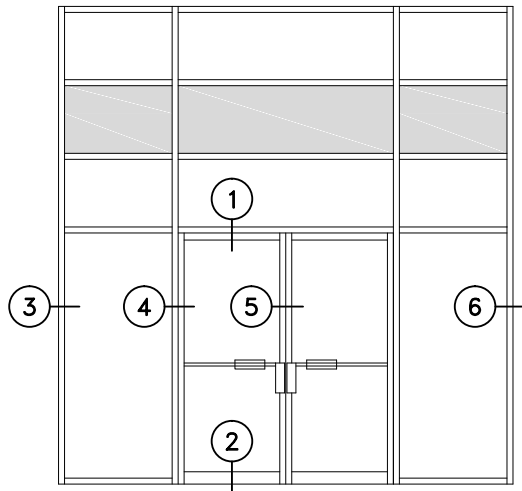


WINDSPEC INC.
MANUFACTURERS OF HIGH PERFORMANCE 'WINDSPEC' WINDOWS
ALUMINUM ENTRANCE SYSTEMS AND ARCHITECTURAL PANELS
1310 CREDITSTONE RD, CONCORD, ONTARIO L4K 5T7
Telephone (905) 738 -8311 Fax (905) 738 - 6188

JANUARY 2016

5400 C.W. SERIES

STANDARD DOOR IN 5400 C.W. TYPICAL DETAILS



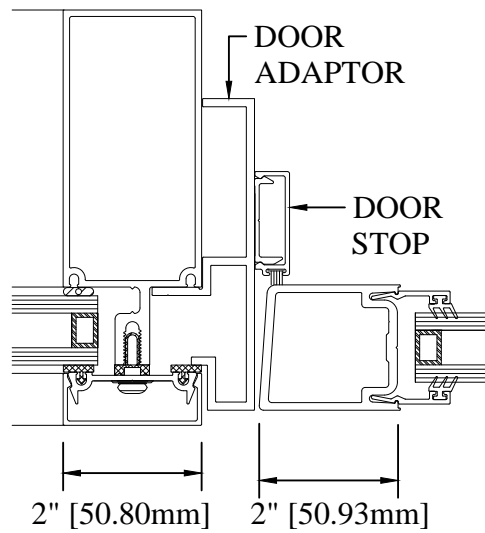
WINDSPEC INC.

MANUFACTURERS OF HIGH PERFORMANCE 'WINDSPEC' WINDOWS
ALUMINUM ENTRANCE SYSTEMS AND ARCHITECTURAL PANELS
1310 CREDITSTONE RD, CONCORD, ONTARIO L4K 5T7
Telephone (905) 738 -8311 Fax (905) 738 - 6188

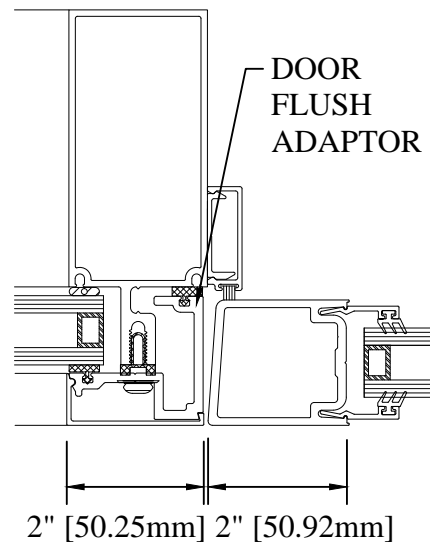
JANUARY 2016

5400 C.W. SERIES

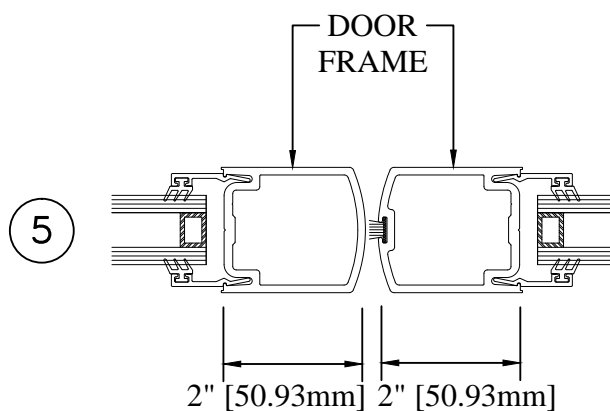
STANDARD DOOR IN 5400 C.W. TYPICAL DETAILS



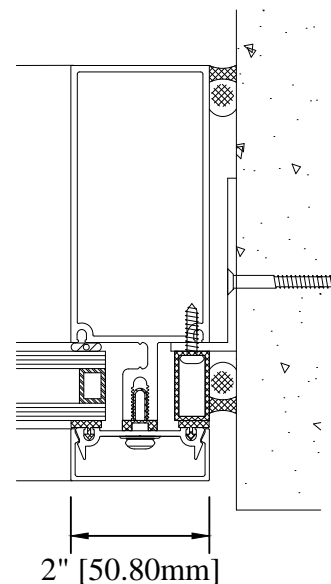
4



4a



5



6

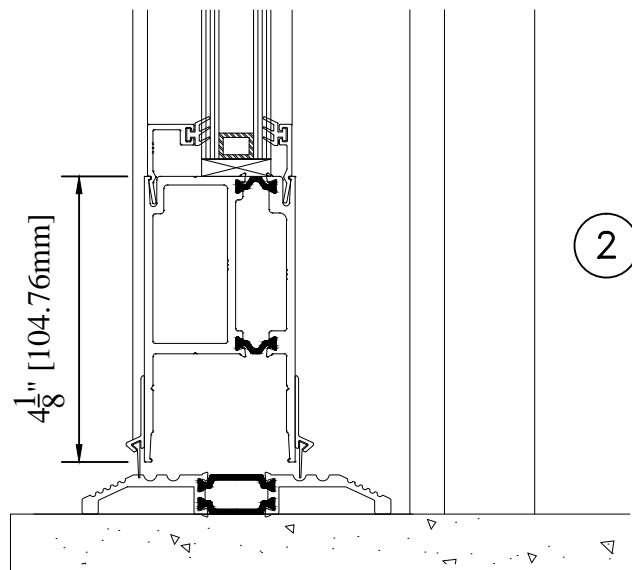
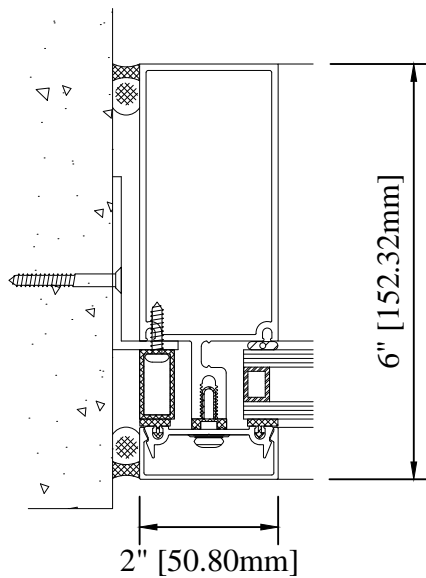
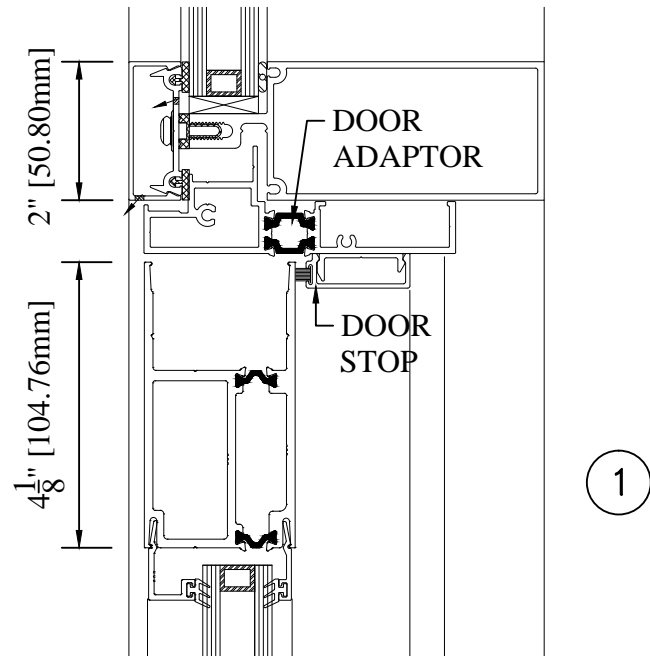
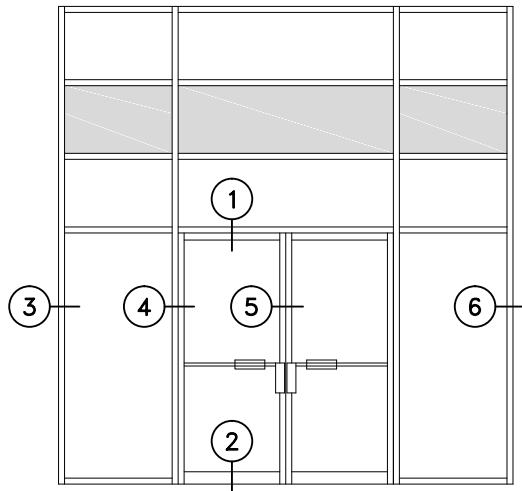


WINDSPEC INC.
MANUFACTURERS OF HIGH PERFORMANCE 'WINDSPEC' WINDOWS
ALUMINUM ENTRANCE SYSTEMS AND ARCHITECTURAL PANELS
1310 CREDITSTONE RD, CONCORD, ONTARIO L4K 5T7
Telephone (905) 738 -8311 Fax (905) 738 - 6188

JANUARY 2016

5400 C.W. SERIES

HTP DOOR IN 5400 C.W. TYPICAL DETAILS

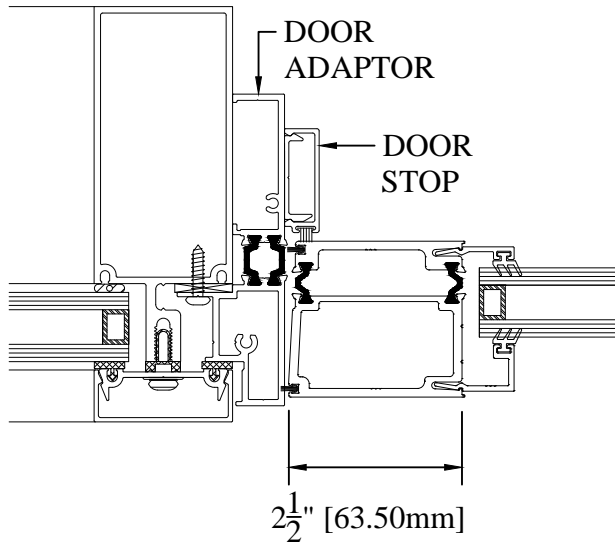


WINDSPEC INC.
MANUFACTURERS OF HIGH PERFORMANCE 'WINDSPEC' WINDOWS
ALUMINUM ENTRANCE SYSTEMS AND ARCHITECTURAL PANELS
1310 CREDITSTONE RD, CONCORD, ONTARIO L4K 5T7
Telephone (905) 738 -8311 Fax (905) 738 - 6188

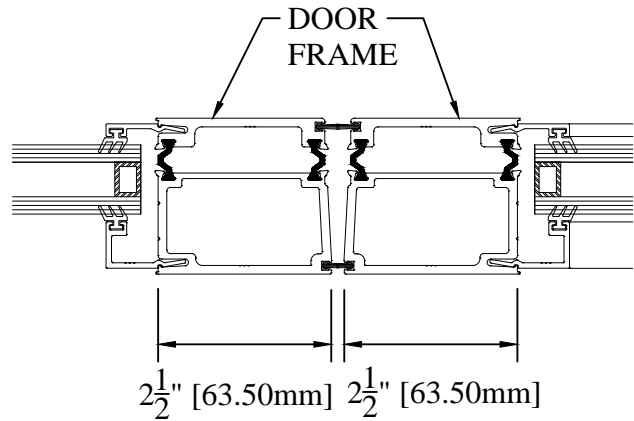
JANUARY 2016

5400 C.W. SERIES

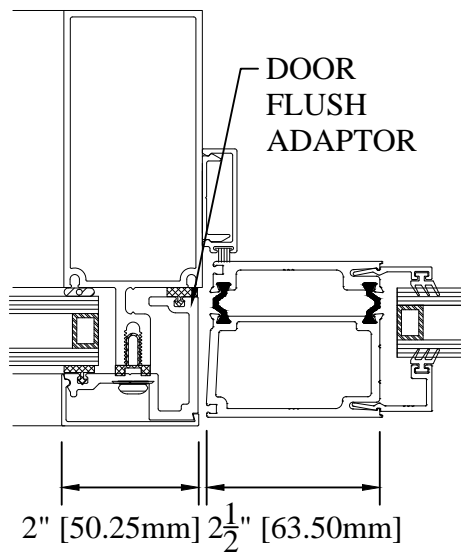
HTP DOOR IN 5400 C.W. TYPICAL DETAILS



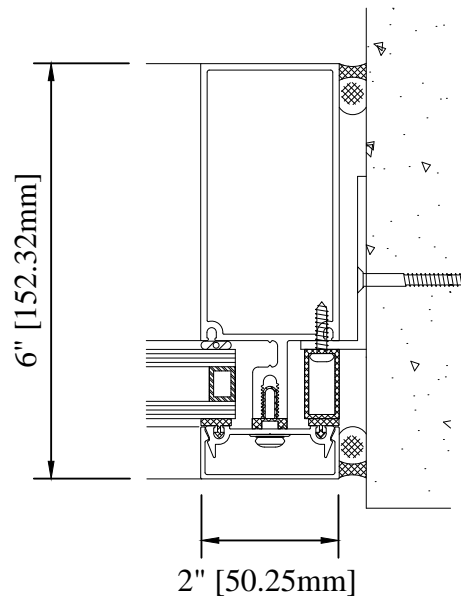
4



5



4a



6



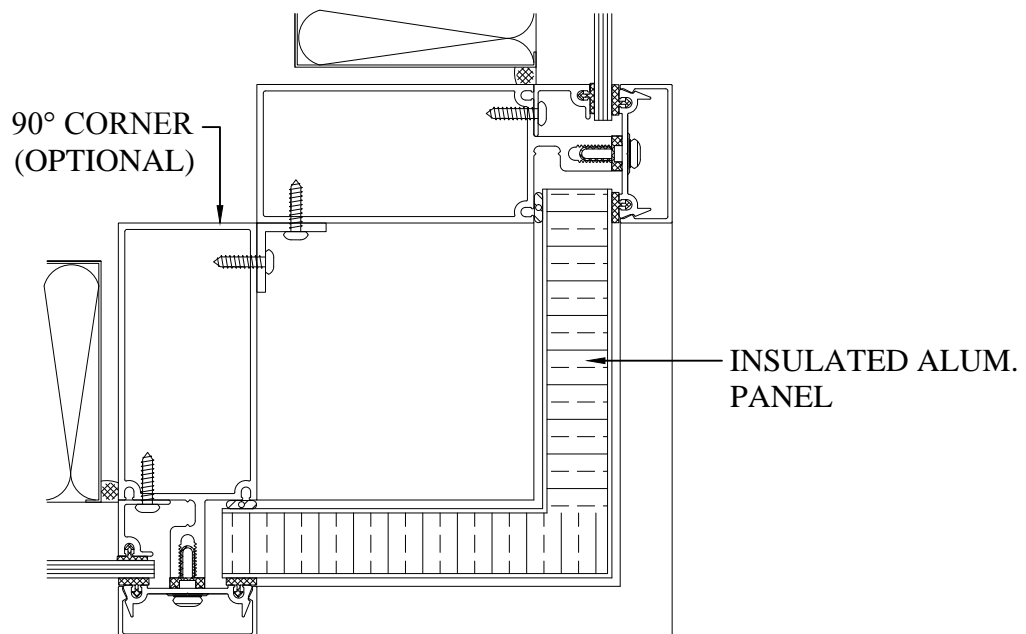
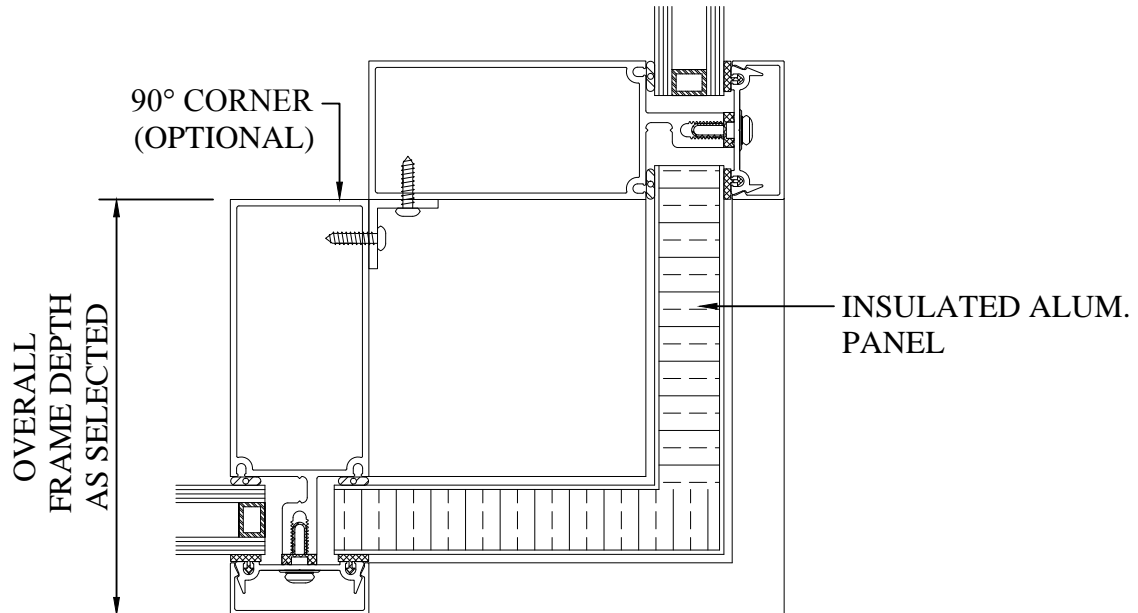
WINDSPEC INC.

MANUFACTURERS OF HIGH PERFORMANCE 'WINDSPEC' WINDOWS
ALUMINUM ENTRANCE SYSTEMS AND ARCHITECTURAL PANELS
1310 CREDITSTONE RD, CONCORD, ONTARIO L4K 5T7
Telephone (905) 738-8311 Fax (905) 738-6188

JANUARY 2016

5400 C.W. SERIES

CORNER DETAILS

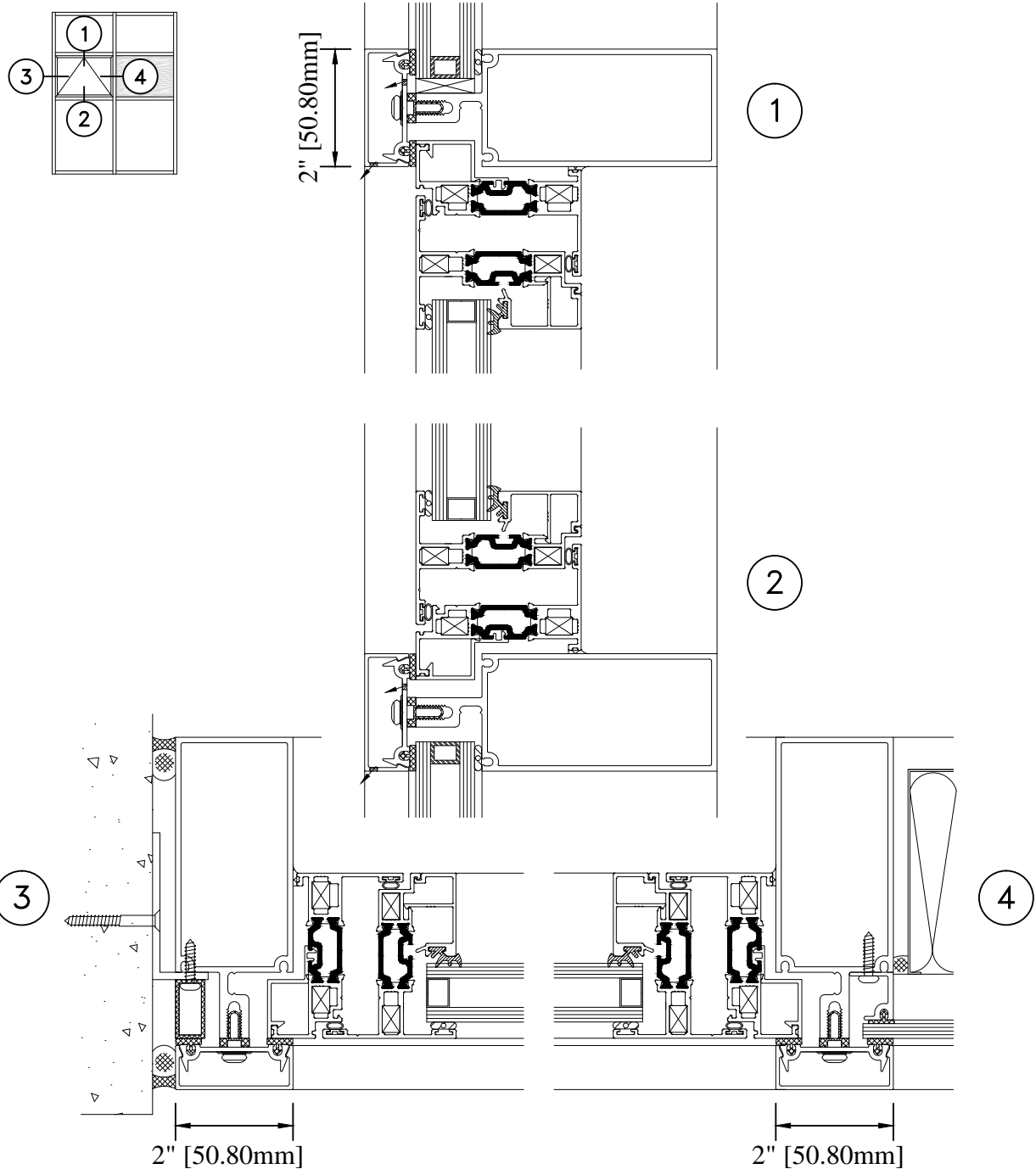


WINDSPEC INC.
MANUFACTURERS OF HIGH PERFORMANCE 'WINDSPEC' WINDOWS
ALUMINUM ENTRANCE SYSTEMS AND ARCHITECTURAL PANELS
1310 CREDITSTONE RD, CONCORD, ONTARIO L4K 5T7
Telephone (905) 738 -8311 Fax (905) 738 - 6188

JANUARY 2016

5400 C.W. SERIES

535 PROJECT OUT VENT IN 5400 C.W. DETAILS

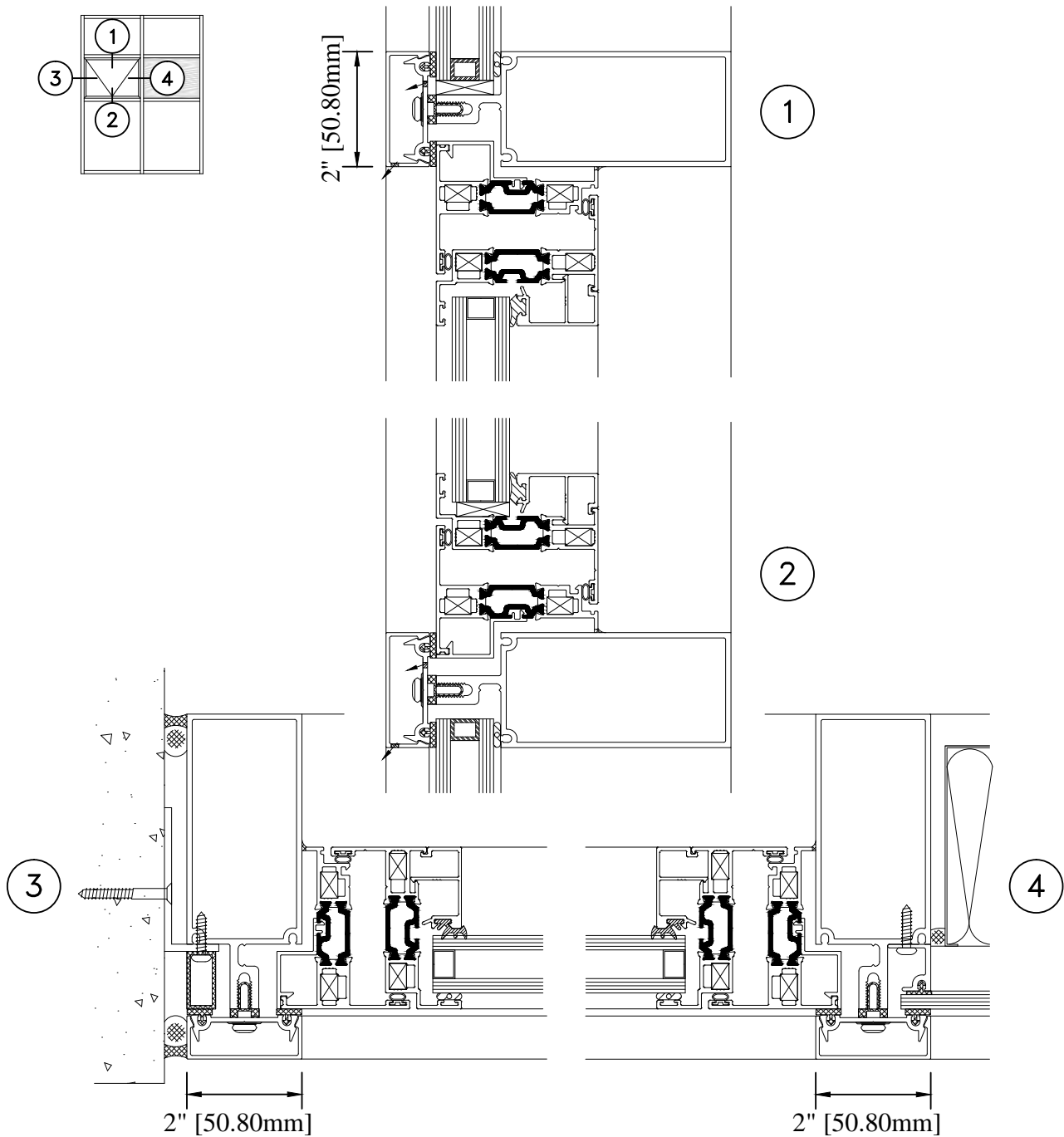


WINDSPEC INC.
MANUFACTURERS OF HIGH PERFORMANCE 'WINDSPEC' WINDOWS
ALUMINUM ENTRANCE SYSTEMS AND ARCHITECTURAL PANELS
1310 CREDITSTONE RD, CONCORD, ONTARIO L4K 5T7
Telephone (905) 738-8311 Fax (905) 738-6188

JANUARY 2016

5400 C.W. SERIES

535 PROJECT IN VENT IN 5400 C.W. DETAILS

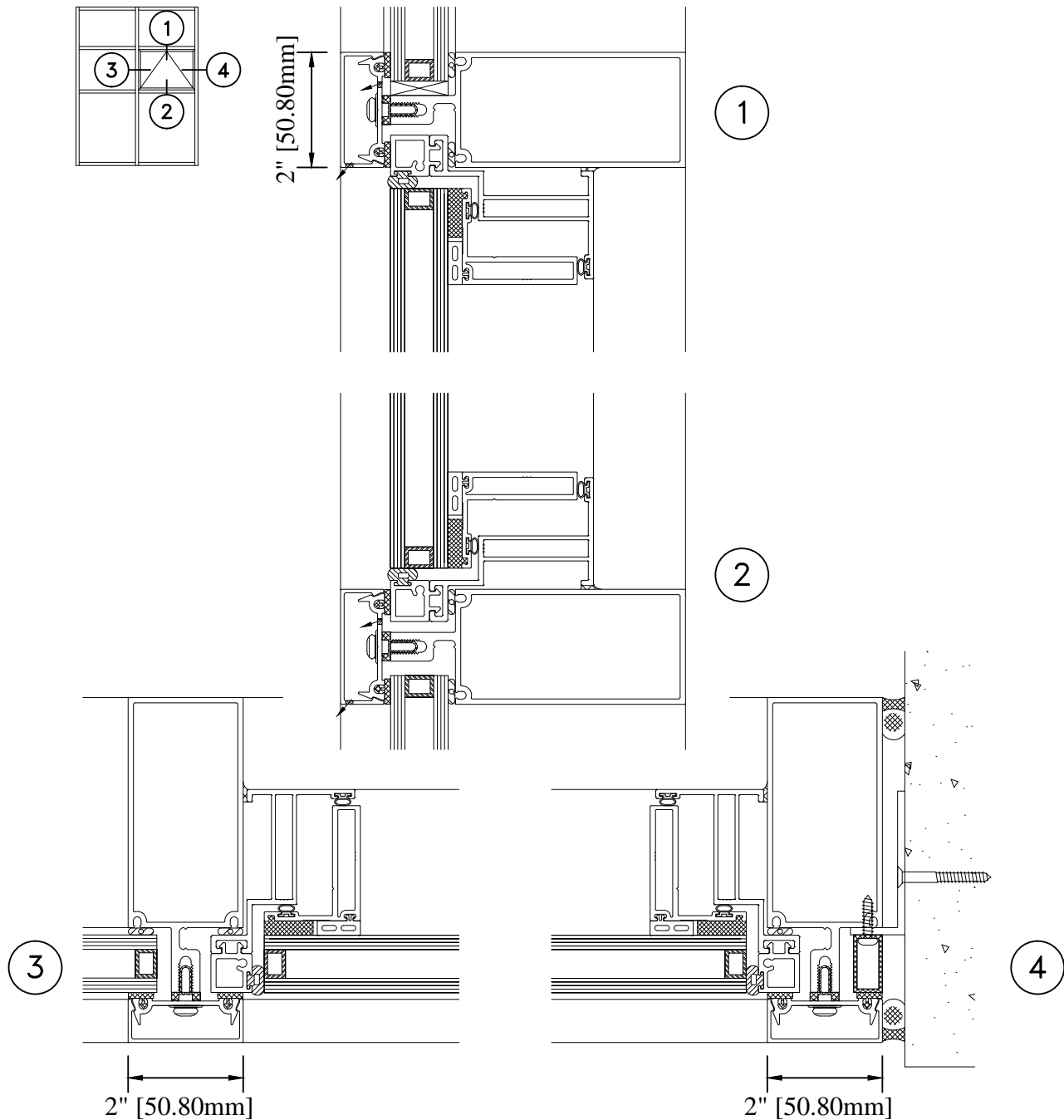


WINDSPEC INC.
MANUFACTURERS OF HIGH PERFORMANCE 'WINDSPEC' WINDOWS
ALUMINUM ENTRANCE SYSTEMS AND ARCHITECTURAL PANELS
1310 CREDITSTONE RD, CONCORD, ONTARIO L4K 5T7
Telephone (905) 738 -8311 Fax (905) 738 - 6188

JANUARY 2016

5400 C.W. SERIES

575 PROJECT OUT VENT IN 5400 C.W. DETAILS

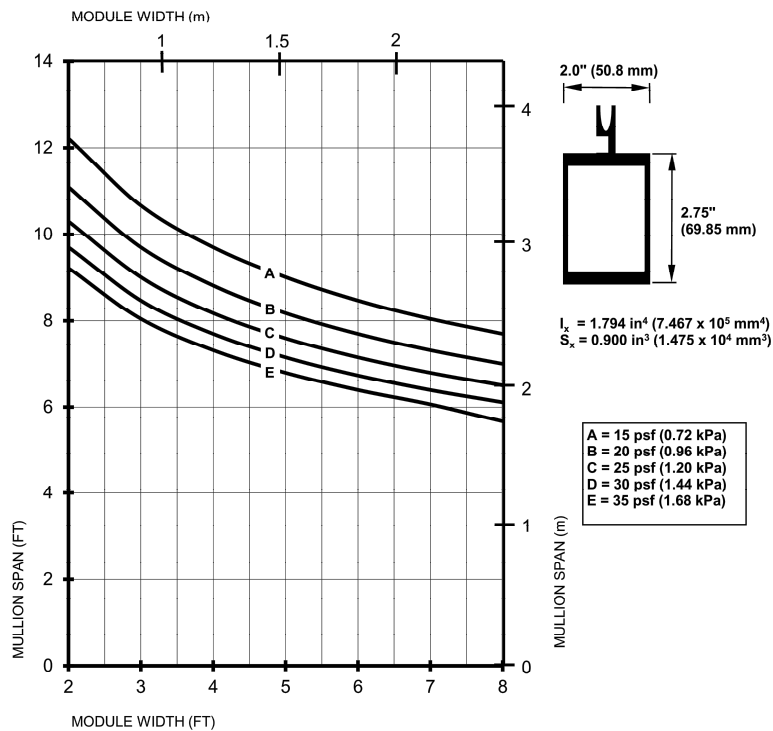


WINDSPEC INC.
MANUFACTURERS OF HIGH PERFORMANCE 'WINDSPEC' WINDOWS
ALUMINUM ENTRANCE SYSTEMS AND ARCHITECTURAL PANELS
1310 CREDITSTONE RD, CONCORD, ONTARIO L4K 5T7
Telephone (905) 738 -8311 Fax (905) 738 - 6188

JANUARY 2016

5400 C.W. SERIES

WIND LOAD CHARTS - 2 3/4" C.W. BACK SECTION



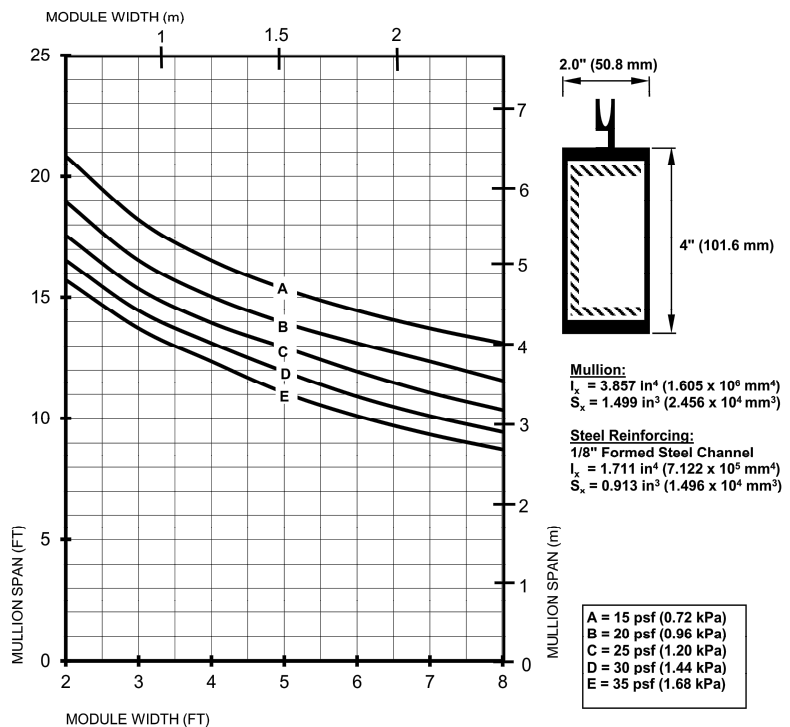
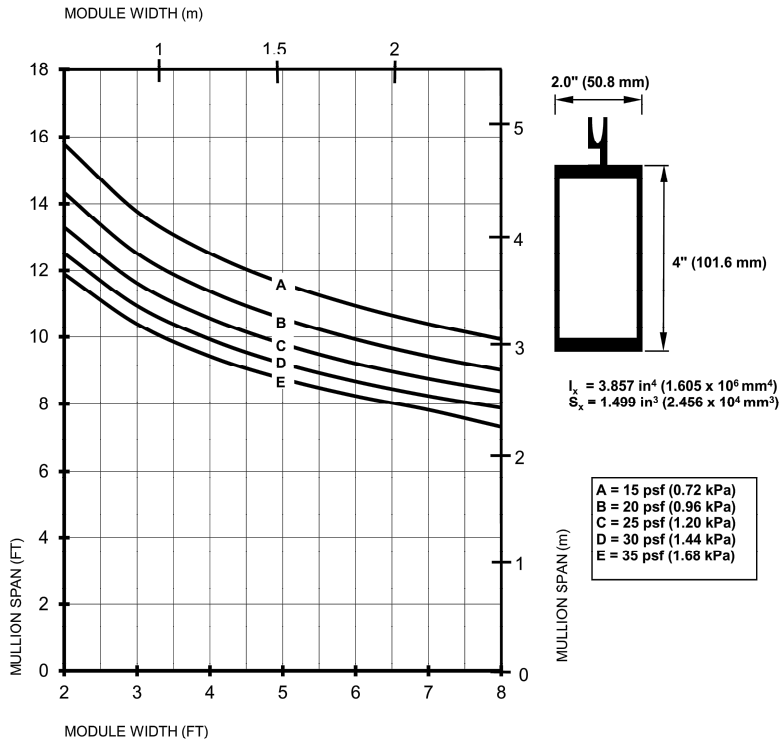
WINDSPEC INC.

MANUFACTURERS OF HIGH PERFORMANCE 'WINDSPEC' WINDOWS
 ALUMINUM ENTRANCE SYSTEMS AND ARCHITECTURAL PANELS
 1310 CREDITSTONE RD, CONCORD, ONTARIO L4K 5T7
 Telephone (905) 738-8311 Fax (905) 738-6188

JANUARY 2016

5400 C.W. SERIES

WIND LOAD CHARTS - 4" C.W. BACK SECTION

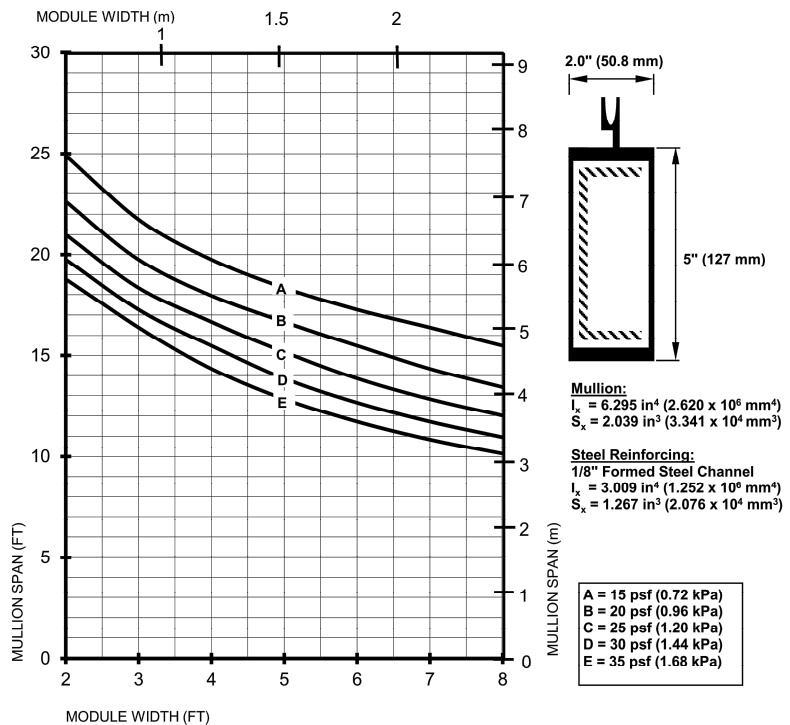
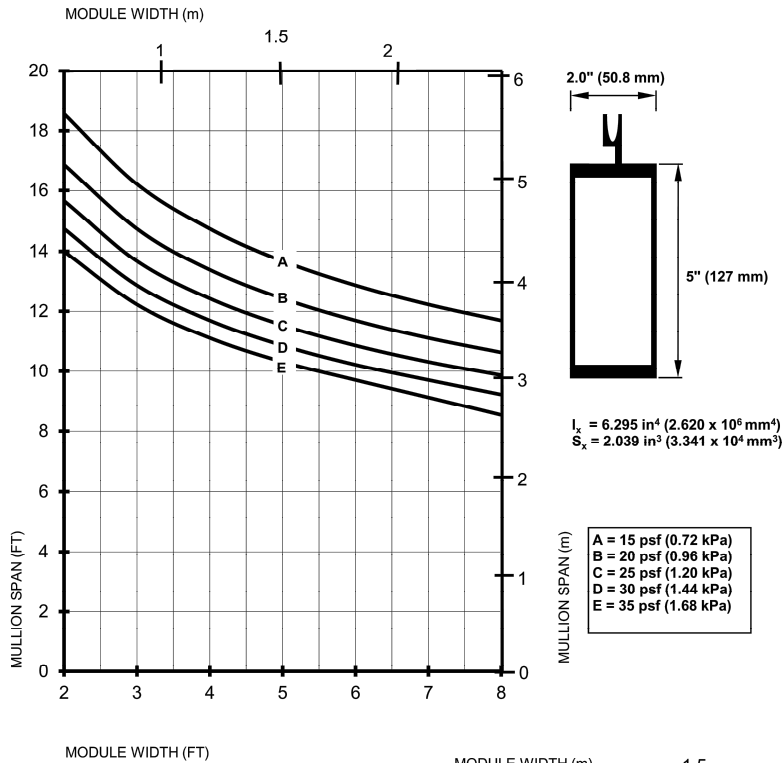


WINDSPEC INC.
MANUFACTURERS OF HIGH PERFORMANCE 'WINDSPEC' WINDOWS
ALUMINUM ENTRANCE SYSTEMS AND ARCHITECTURAL PANELS
1310 CREDITSTONE RD, CONCORD, ONTARIO L4K 5T7
Telephone (905) 738-8311 Fax (905) 738-6188

JANUARY 2016

5400 C.W. SERIES

WIND LOAD CHARTS - 5" C.W. BACK SECTION



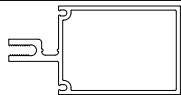






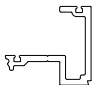
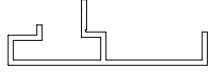
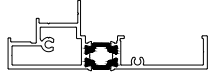

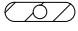
WINDSPEC INC.

MANUFACTURERS OF HIGH PERFORMANCE 'WINDSPEC' WINDOWS
ALUMINUM ENTRANCE SYSTEMS AND ARCHITECTURAL PANELS
1310 CREDITSTONE RD, CONCORD, ONTARIO L4K 5T7
Telephone (905) 738-8311 Fax (905) 738-6188

JANUARY 2016

5400 C.W. SERIES

PARTS LIST

Part Number	Description	Profile
C-54001	2 x 2 $\frac{3}{4}$ " (50.8mmx69.9mm) mullion	
C-54002	2 x 4" (50.8mmx101.6mm) mullion	
C-54003	2 x 5" (50.8mmx127.0mm) mullion	
C-54004	2 x $\frac{3}{4}$ " (50.8mmx19.1mm) snap on cap	
C-54005	2" (50.8mm) sloped glaze pressure plate	
C-54006	2" (50.8mm) pressure plate	
C-54007	flush door adaptor cover plate	
C-54008	flush door adaptor base	
C-55007	standard door adaptor	
C-55207	thermal door adaptor	
R-55003	exterior glazing spline	 N.T.S.
R-00003	glazing tape polyshim ($\frac{3}{8}$ " x $\frac{5}{32}$ " x $\frac{1}{8}$ ")	 N.T.S.





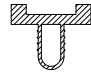
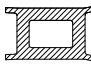
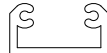
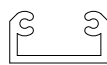
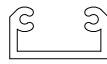
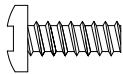
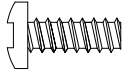
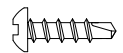
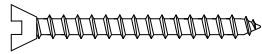
WINDSPEC INC.

MANUFACTURERS OF HIGH PERFORMANCE 'WINDSPEC' WINDOWS
ALUMINUM ENTRANCE SYSTEMS AND ARCHITECTURAL PANELS
1310 CREDITSTONE RD, CONCORD, ONTARIO L4K 5T7
Telephone (905) 738 -8311 Fax (905) 738 - 6188

JANUARY 2016

5400 C.W. SERIES

PARTS LIST

Part Number	Description	Profile
R-55006	P.V.C pocket filler 1- $\frac{1}{16}$ "	 N.T.S.
R-55001	P.V.C pocket filler 1- $\frac{1}{8}$ "	 N.T.S.
R-53001	P.V.C thermal barrier	 N.T.S.
H-54004	corner plug	 N.T.S.
H-54001	shear block for mullions 2 $\frac{3}{4}$ "	 N.T.S.
H-54002	shear block for mullions 4"	 N.T.S.
H-54003	shear block for mullions 5"	 N.T.S.
H-00012	$\frac{1}{4}$ " \varnothing x #20 x $\frac{3}{4}$ " machine screw	 N.T.S.
H-00012-32	$\frac{1}{4}$ " \varnothing x #20 x $\frac{3}{4}$ " S.S. machine screw	 N.T.S.
H-00020	#10 x $\frac{3}{4}$ " tapping screw shear block to mullion	 N.T.S.
H-00025	#10 x 1 $\frac{1}{4}$ " flat head screw-zinc plated mullion to shear block	 N.T.S.



WINDSPEC INC.

MANUFACTURERS OF HIGH PERFORMANCE 'WINDSPEC' WINDOWS
ALUMINUM ENTRANCE SYSTEMS AND ARCHITECTURAL PANELS
1310 CREDITSTONE RD, CONCORD, ONTARIO L4K 5T7
Telephone (905) 738 -8311 Fax (905) 738 - 6188

JANUARY 2016