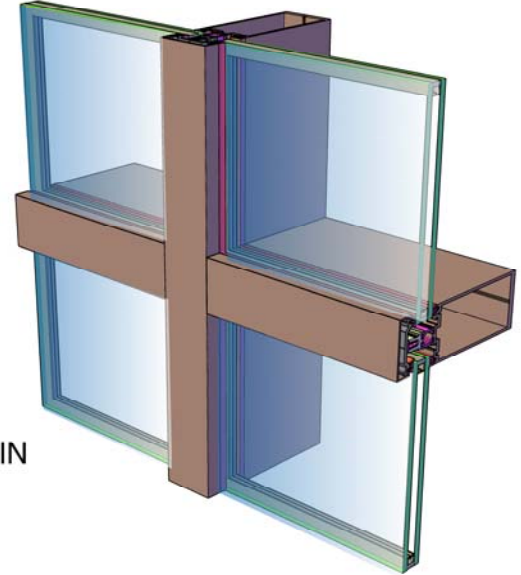


TECHNICAL DATA

DESCRIPTION: A TRULY HIGH PERFORMING CURTAIN WALL SYSTEM WITH 20 mm OF THERMAL SEPARATION INTEGRATED INTO THE CURTAIN WALL NECK. 2-1/2" PROFILE WITH MULLION SECTIONS AVAILABLE IN 4 "(101.6mm), 5-1/4" (133.4mm), 6-5/8" (168.28mm), 8" (203.2mm) and 10" (254mm) DEPTHS. THE SEALED UNIT WEIGHT IS SUPPORTED BY GLASS HOLDERS ON THE HORIZONTAL MULLIONS.



COMPATIBILITY: THE 8200 CAN BE USED WITH THE SERIES 8000 SSG, TWO SIDED CURTAIN WALL IN MOST APPLICATIONS. DESIGNED TO SUIT ALL SERIES 225 OPERABLE WINDOWS AND SWING DOORS INCLUDING THE SERIES 4487 THERMAL DOOR.

FINISH: PROFILES STOCKED IN MILL FINISH AND CLEAR ANODIZED, OTHER FINISHES ARE AVAILABLE UPON REQUEST.

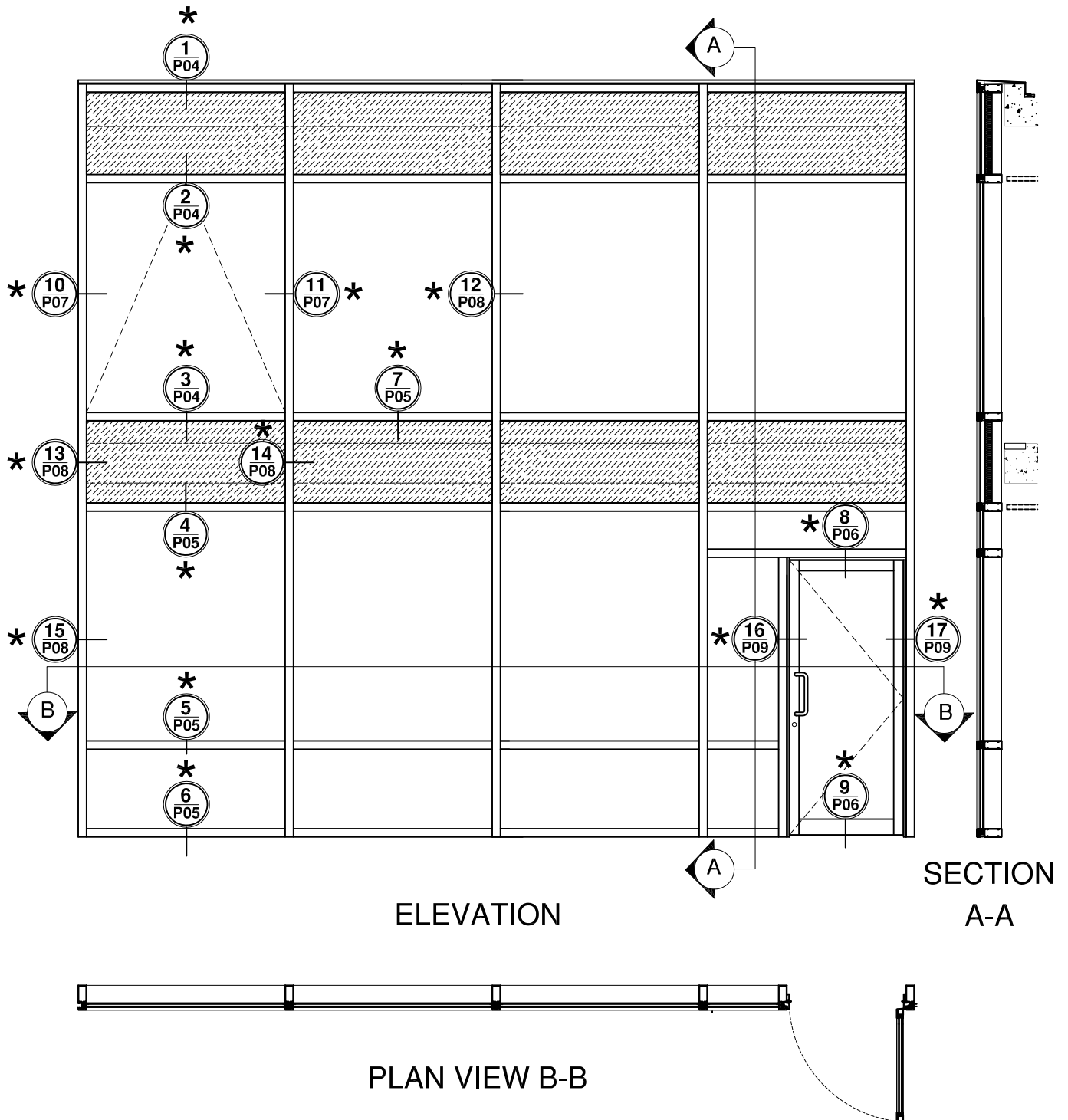
STOCK LENGTH: 24'-2" (7.37 METERS).

ASSEMBLY: DESIGNED FOR SHEAR BLOCK ASSEMBLY

STRENGTH: REFER TO WIND LOAD CHARTS FOR MAXIMUM ALLOWABLE SPAN, CONSULT STRUCTURAL ENGINEERING FOR FINAL DESIGN

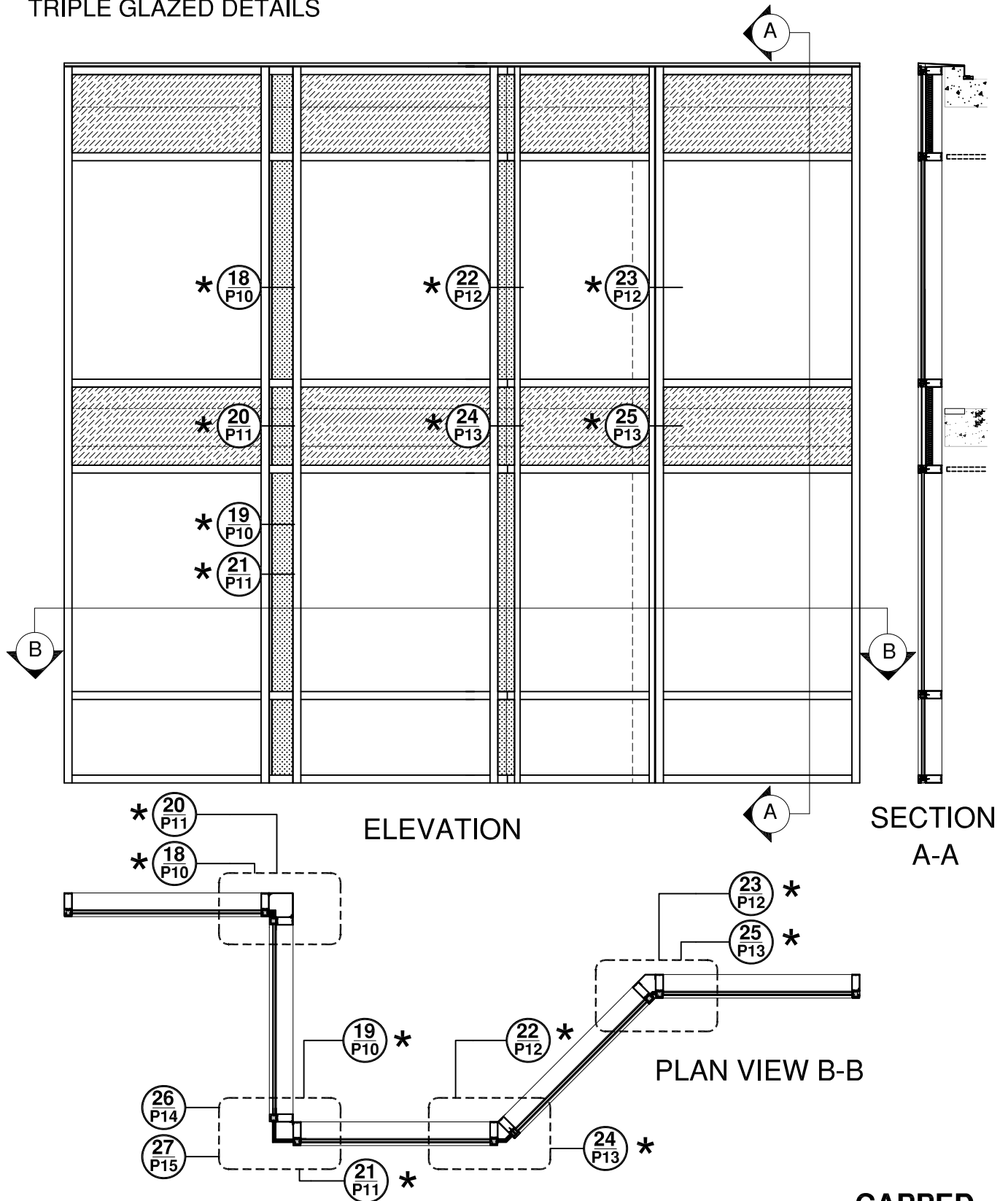
ANCHORING: REFER TO FABRICATION AND INSTALLATION MANUAL.

GLAZING: 8200 SERIES IS AN EXTERIOR GLAZED SYSTEM WHICH WILL ACCEPT 1/4" (6mm) SINGLE GLASS, 1" (25mm) SEALED AND 1-3/4" (44.4mm) TRIPLE GLAZED.



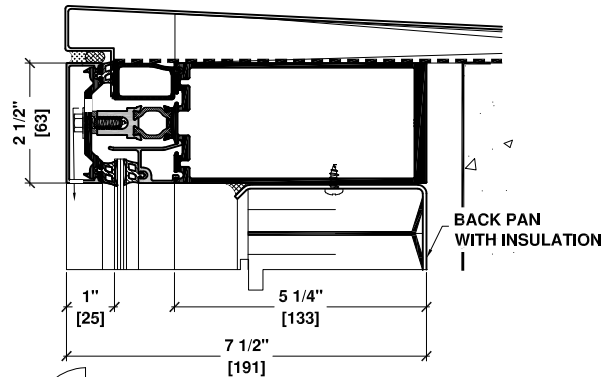
CLICK ON * TO 8200
TRIPLE GLAZED DETAILS

CLICK ON * TO 8200
TRIPLE GLAZED DETAILS

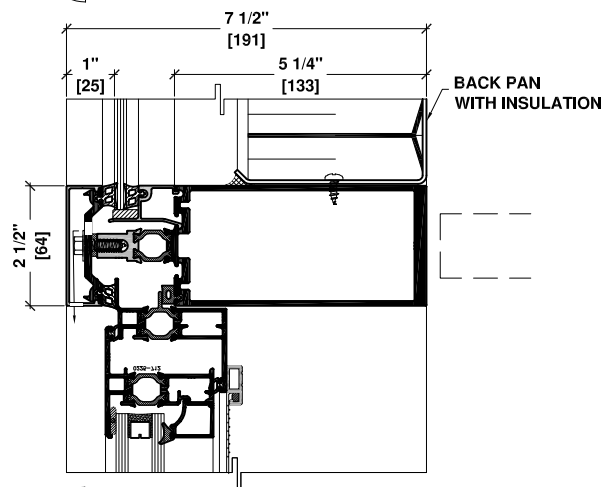


CAPPED

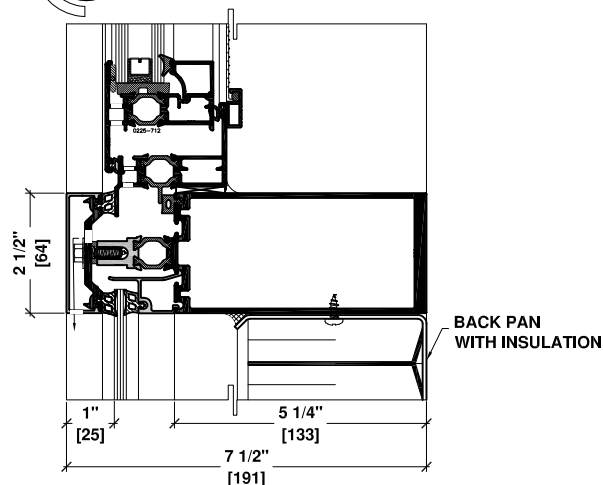
P03



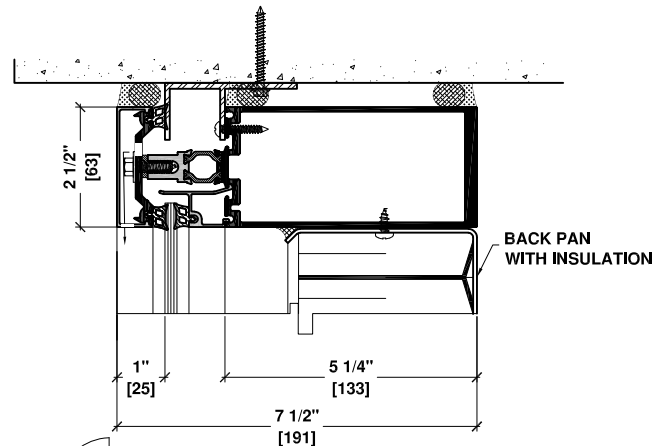
1 5 1/4" HORIZONTAL TUBE
SPANDREL
PARAPET WALL CONDITION



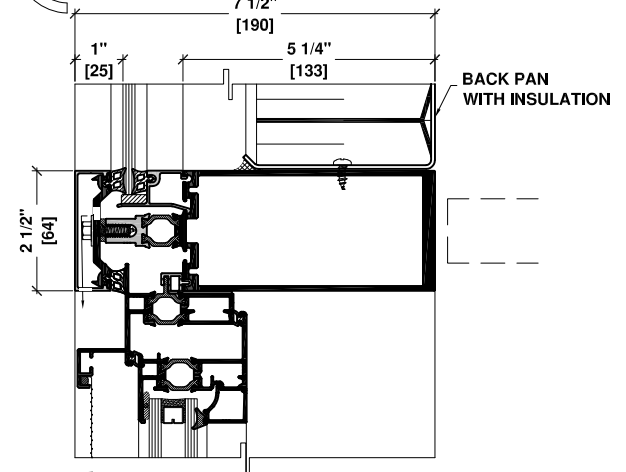
2 5 1/4" HORIZONTAL TUBE
SPANDREL / VENT



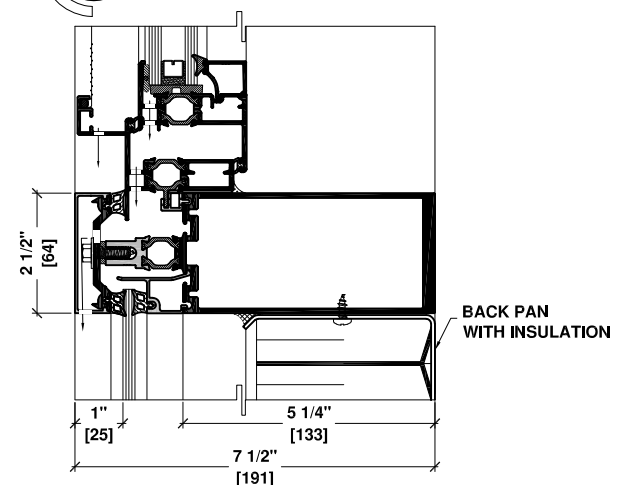
3 5 1/4" HORIZONTAL TUBE
VENT / SPANDREL



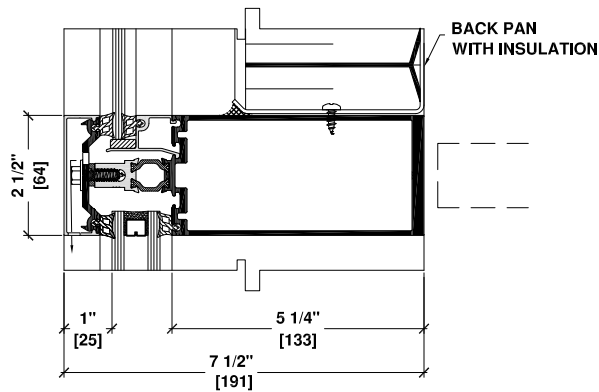
1a 5 1/4" HORIZONTAL TUBE
SPANDREL
SLAB CONDITION



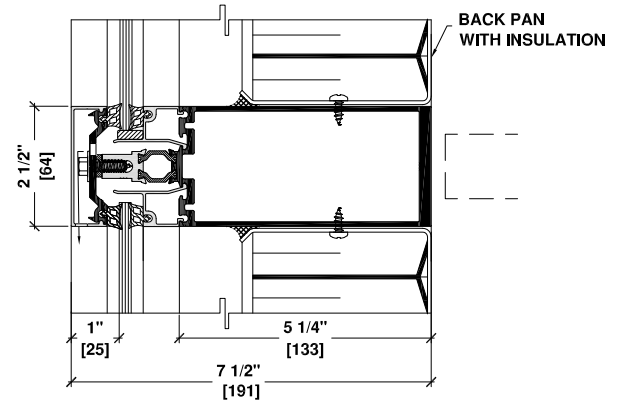
2a 5 1/4" HORIZONTAL TUBE
SPANDREL / VENT OPEN IN



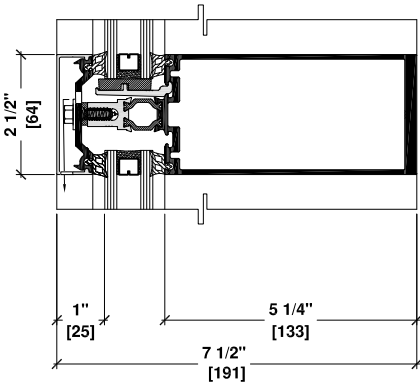
3a 5 1/4" HORIZONTAL TUBE
VENT OPEN IN / SPANDREL



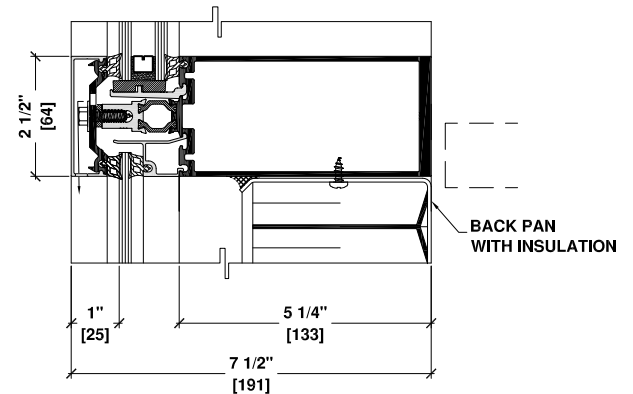
4 5 1/4" HORIZONTAL TUBE
SPANDREL / FIXED GLASS



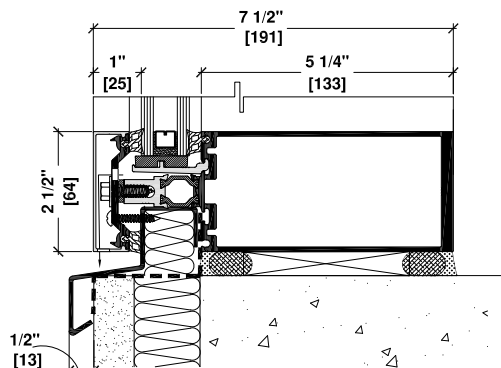
4a 5 1/4" HORIZONTAL TUBE
SPANDREL / SPANDREL



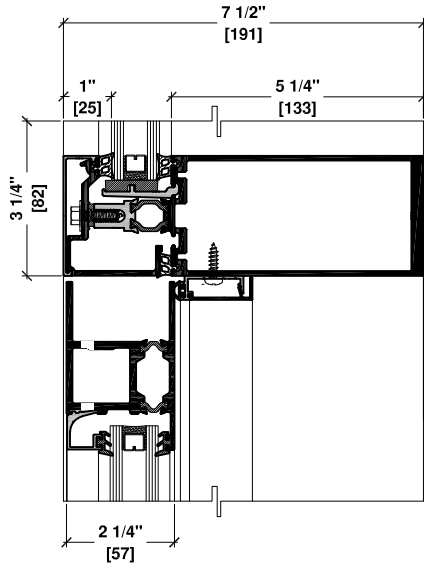
5 5 1/4" HORIZONTAL TUBE
FIXED GLASS / FIXED GLASS



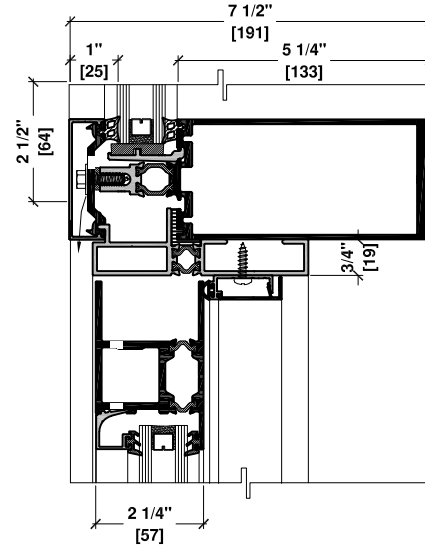
7 5 1/4" HORIZONTAL TUBE
FIXED GLASS / SPANDREL



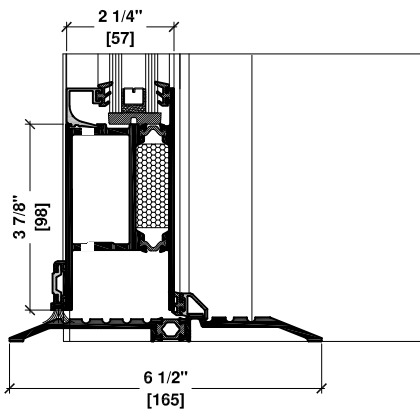
6 5 1/4" HORIZONTAL TUBE
FIXED GLASS
SILL CONDITION



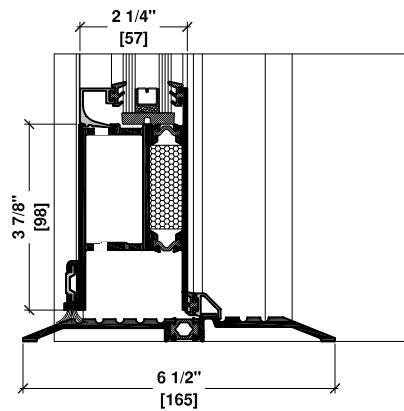
8 5 1/4" HORIZONTAL TUBE /
SERIES 4200 DOOR



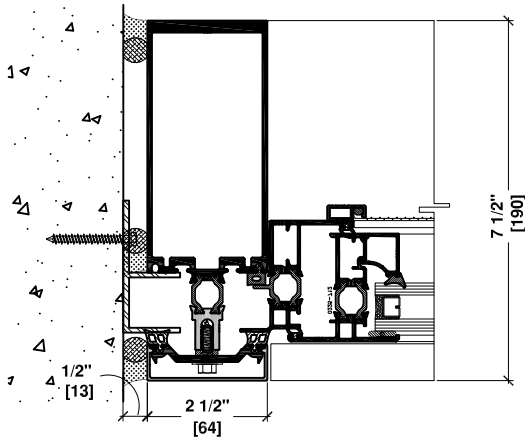
8a 5 1/4" HORIZONTAL TUBE /
SERIES 4200 DOOR



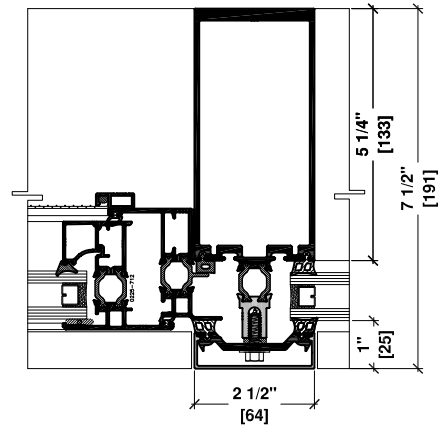
9 SERIES 4200 DOOR
SILL CONDITION



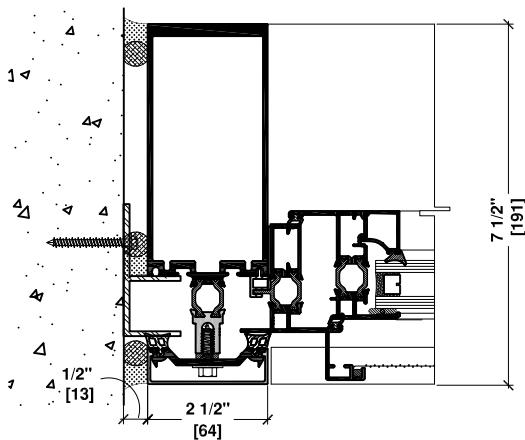
9a SERIES 4200 DOOR
SILL CONDITON



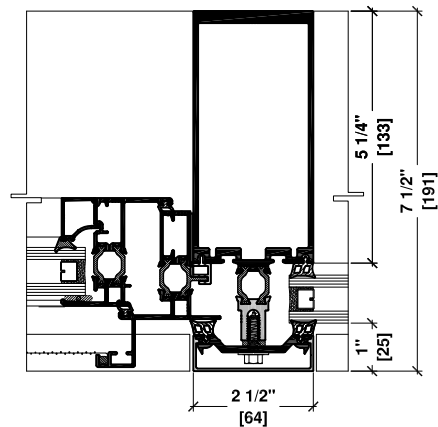
10 5 1/4" VERTICAL TUBE
JAMB CONDITION - VENT
OPEN OUT



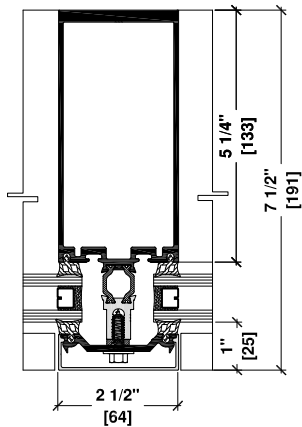
11 5 1/4" VERTICAL TUBE
VENT OPEN OUT
FIXED GLASS



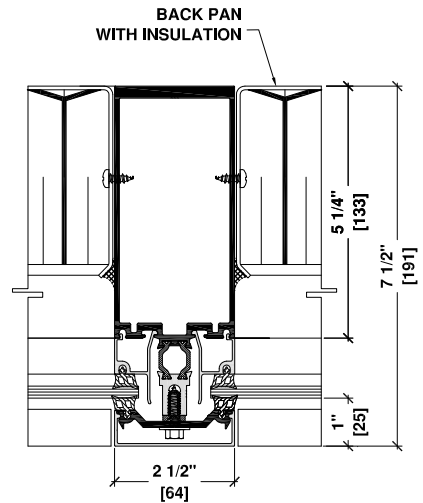
10a 5 1/4" VERTICAL TUBE
JAMB CONDITION - VENT
OPEN IN



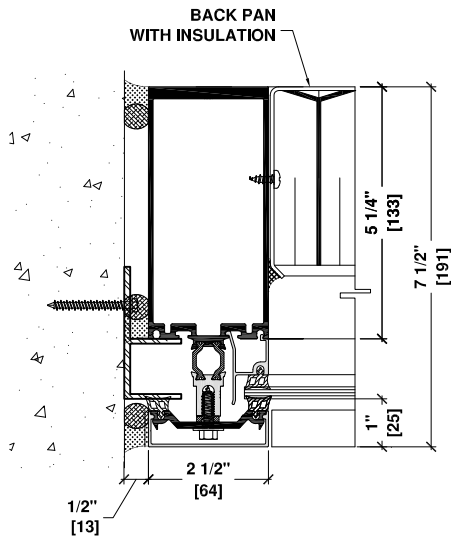
11a 5 1/4" VERTICAL TUBE
VENT OPEN IN
FIXED GLASS



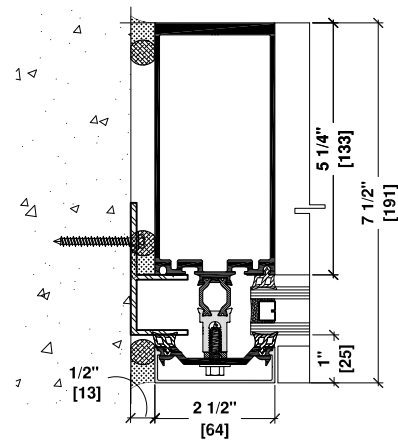
12 5 1/4" VERTICAL TUBE
FIXED GLASS



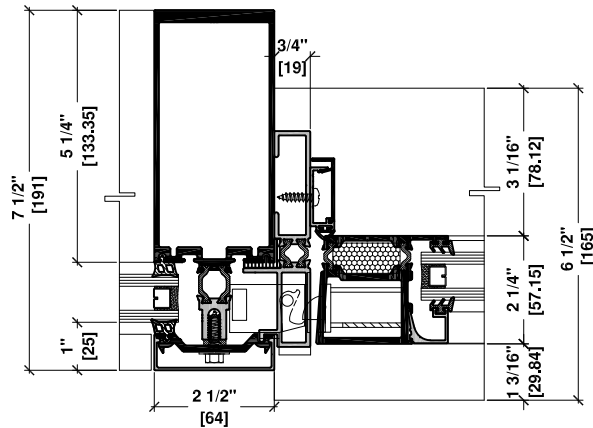
14 5 1/4" VERTICAL TUBE
SPANDREL - SPANDREL



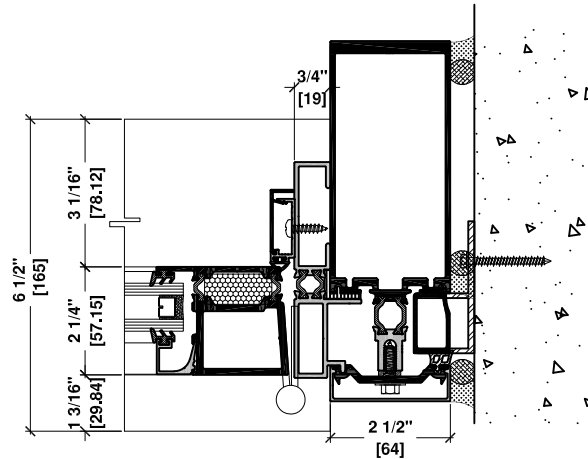
13 5 1/4" VERTICAL TUBE
SPANDREL
JAMB CONDITION



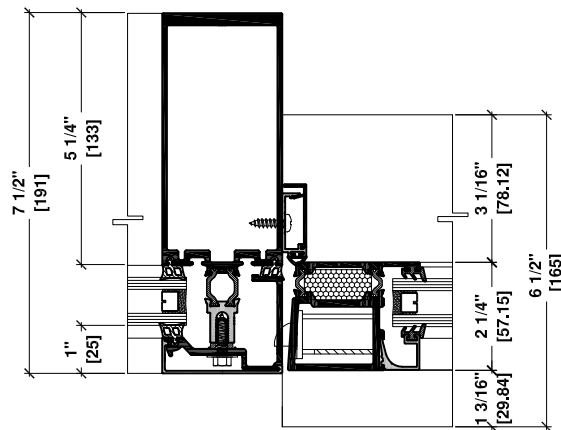
15 5 1/4" VERTICAL TUBE
FIXED GLASS
JAMB CONDITION



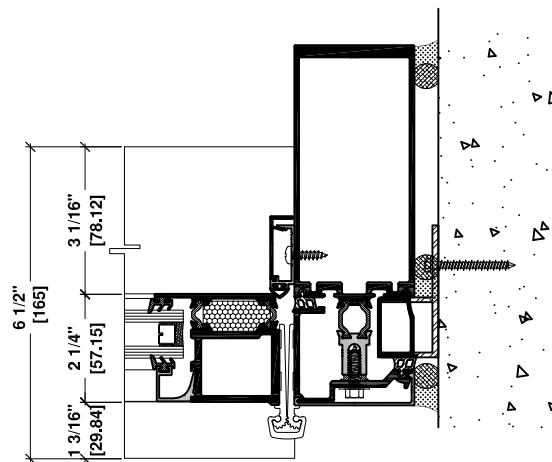
16 5 1/4" VERTICAL TUBE
SERIES 4200 DOOR
JAMB ADAPTOR CONDITION



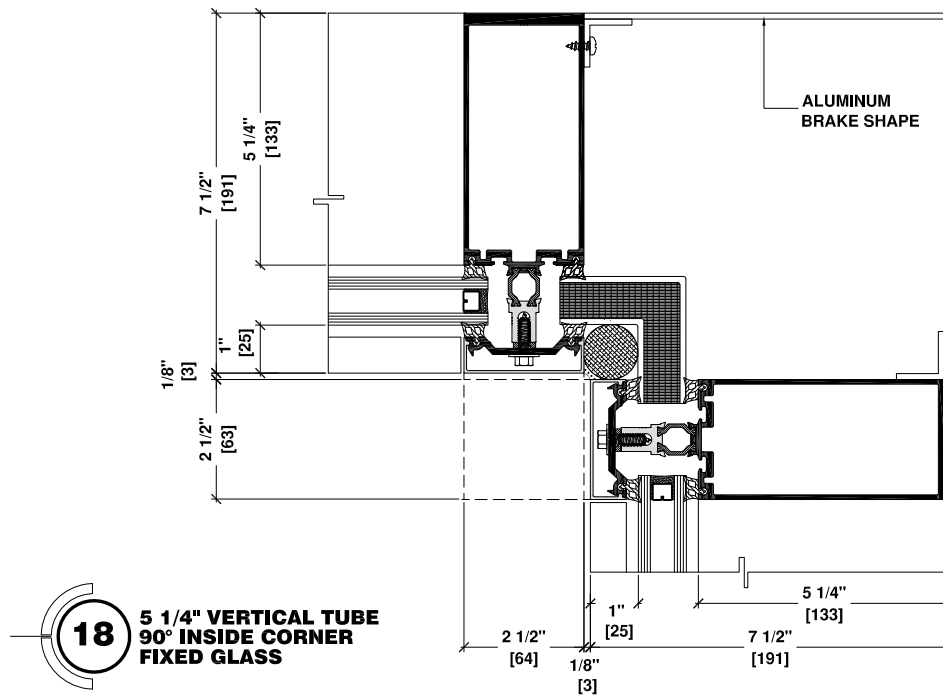
17 5 1/4" VERTICAL TUBE
SERIES 4200 DOOR
JAMB BUTT HINGE CONDITION



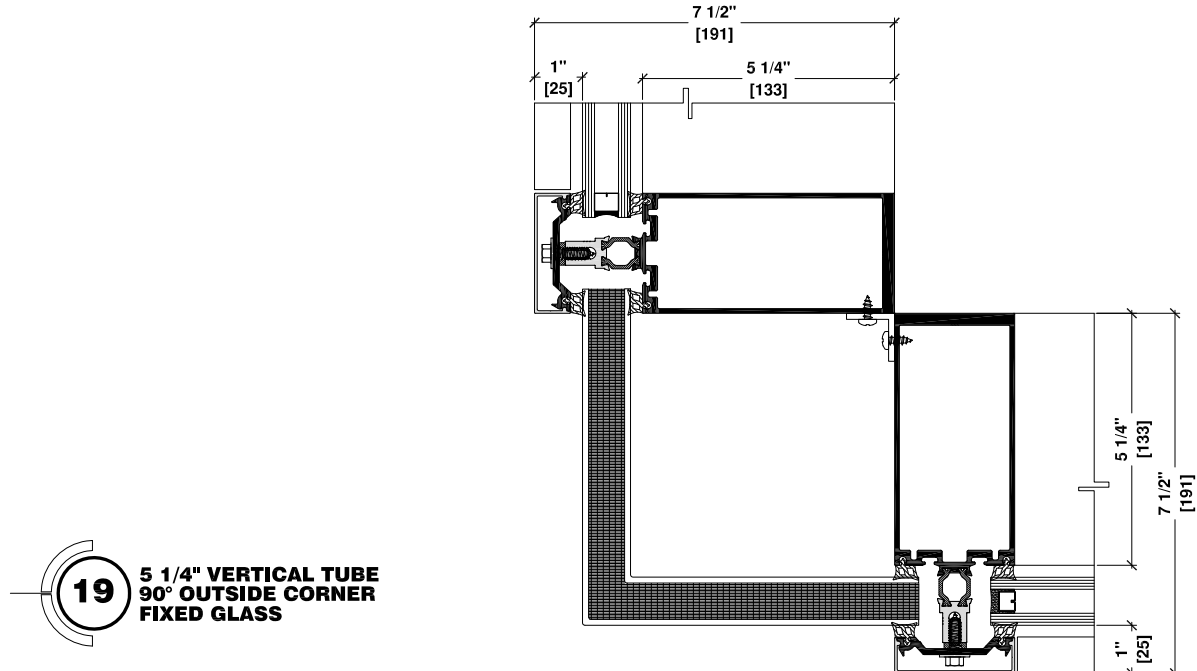
16a 5 1/4" VERTICAL TUBE
SERIES 4200 DOOR
JAMB ADAPTOR CONDITION



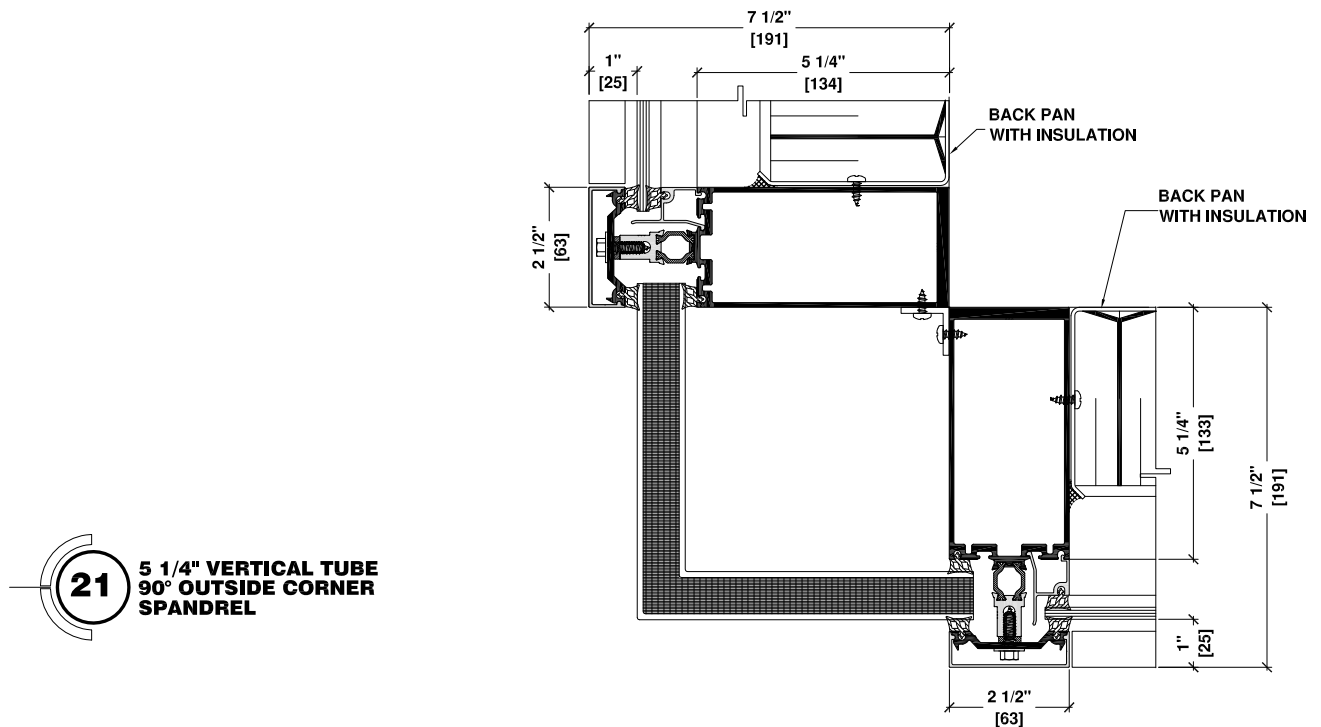
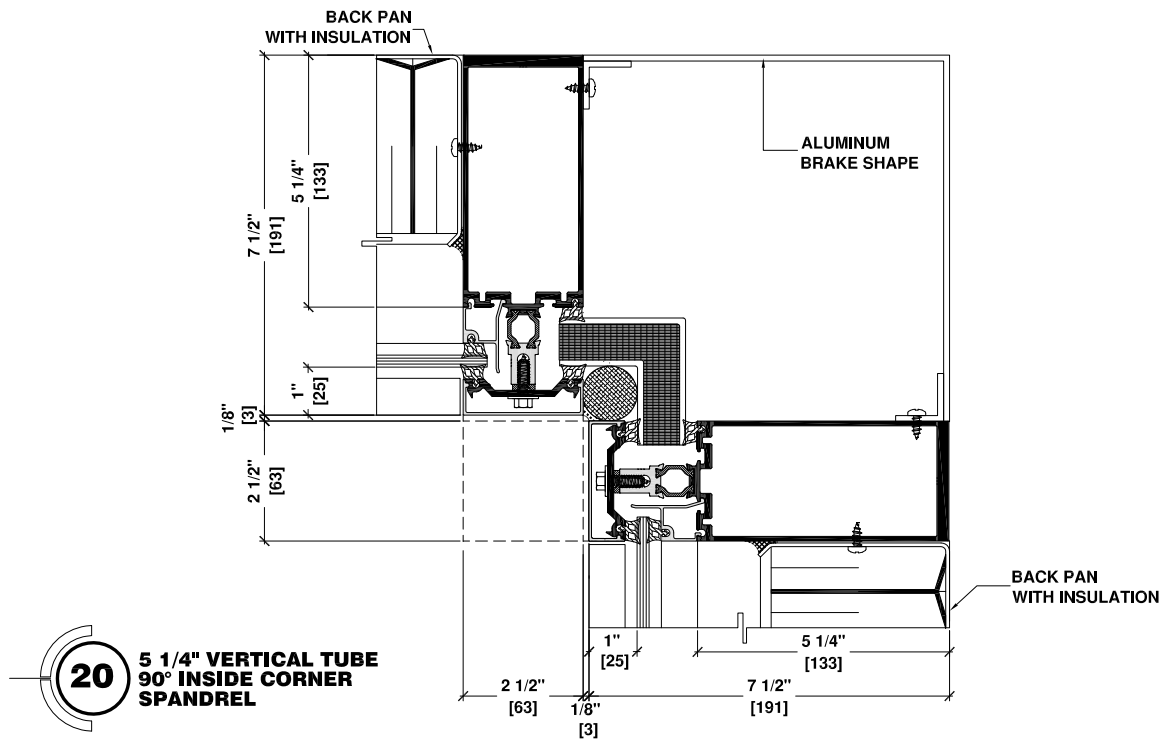
17a 5 1/4" VERTICAL TUBE
SERIES 4200 DOOR
JAMB CONTINUOUS HINGE CONDITION

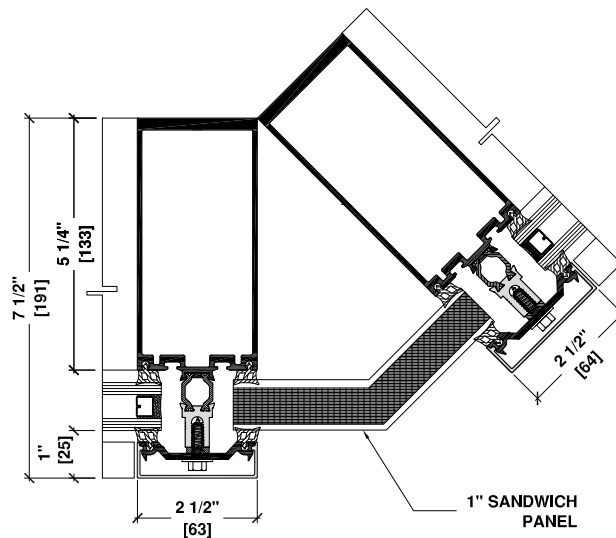


18 5 1/4" VERTICAL TUBE
90° INSIDE CORNER
FIXED GLASS

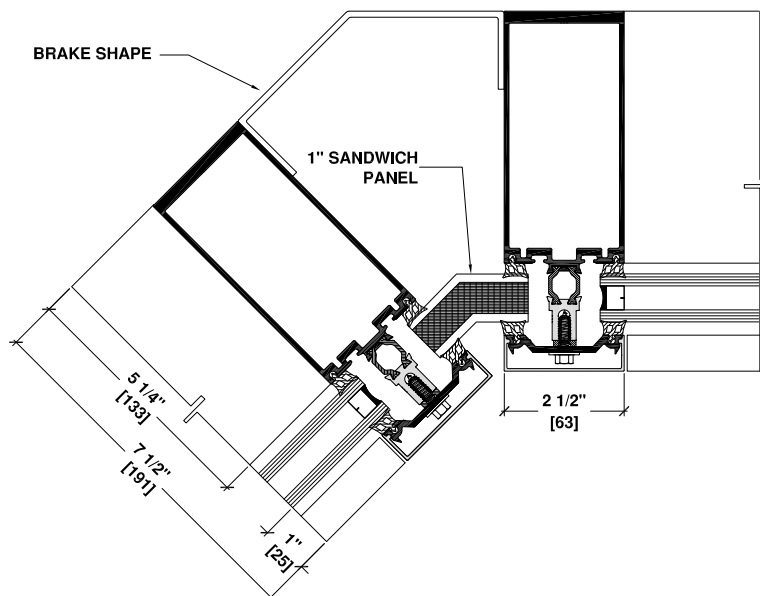


19 5 1/4" VERTICAL TUBE
90° OUTSIDE CORNER
FIXED GLASS

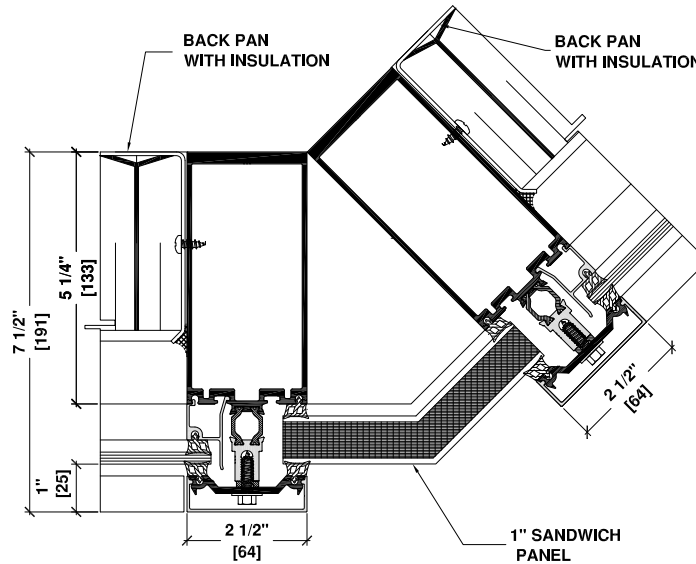




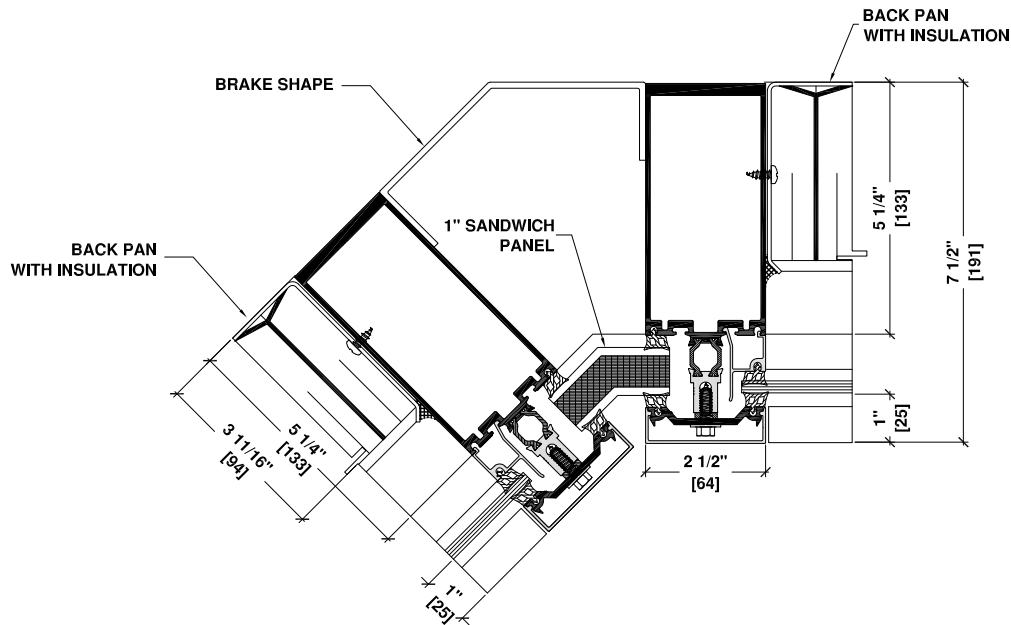
22 5 1/4" VERTICAL TUBE
135° OUTSIDE CORNER
FIXED GLASS



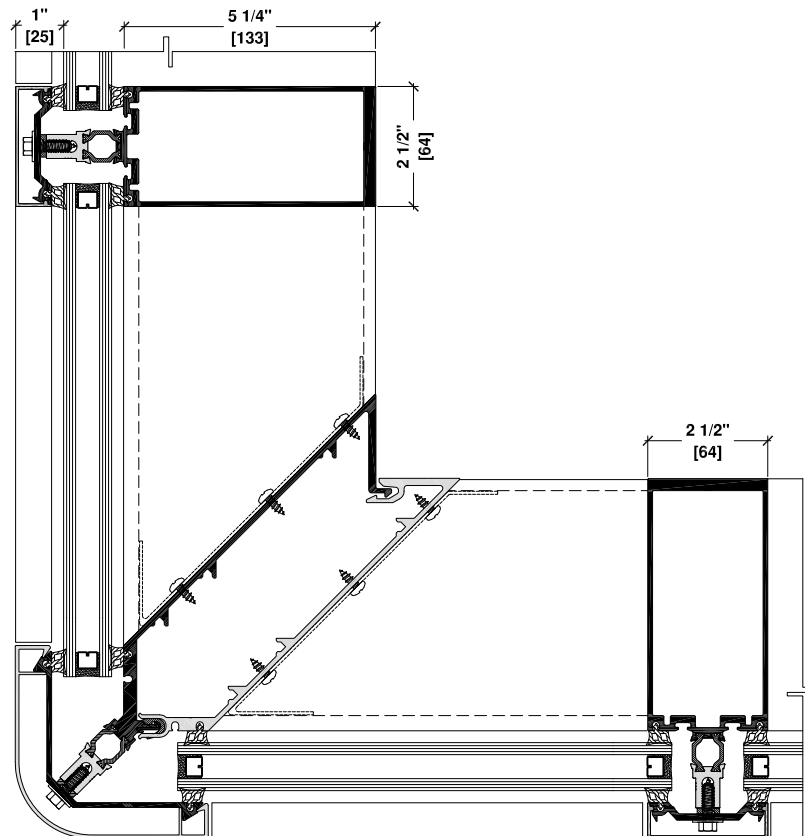
23 5 1/4" VERTICAL TUBE
135° INSIDE CORNER
FIXED GLASS

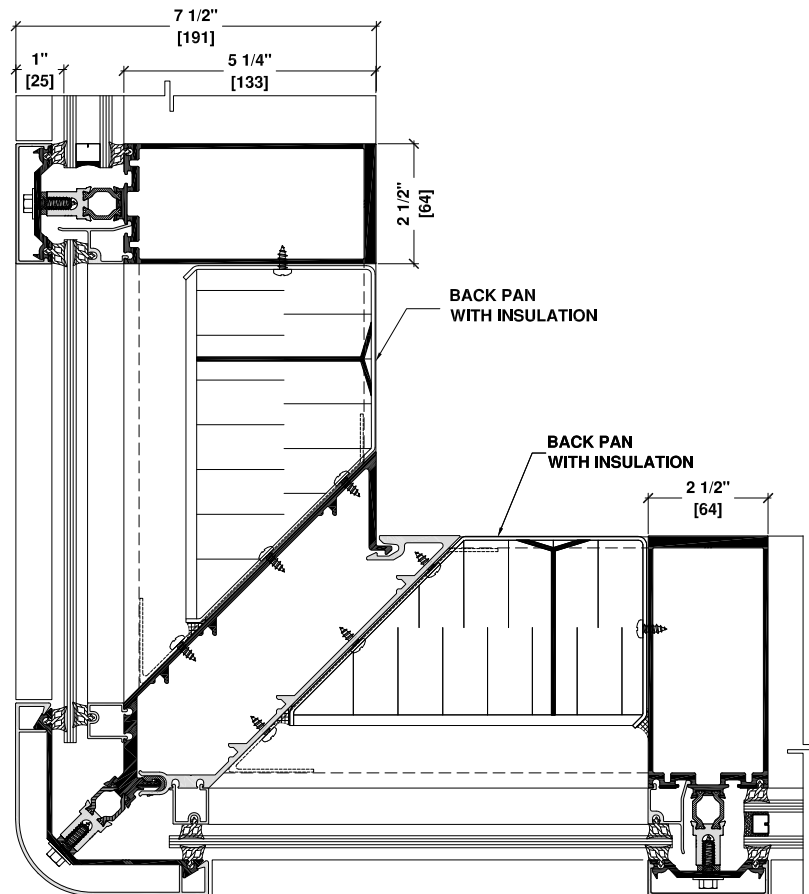


24 5 1/4" VERTICAL TUBE
135° OUTSIDE CORNER WITH
SPANDREL

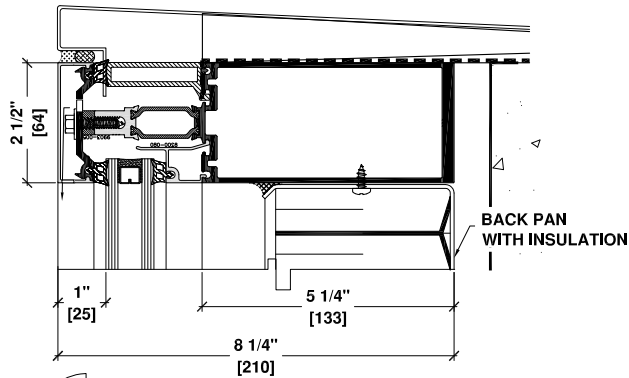


25 5 1/4" VERTICAL TUBE
135° INSIDE CORNER WITH
SPANDREL

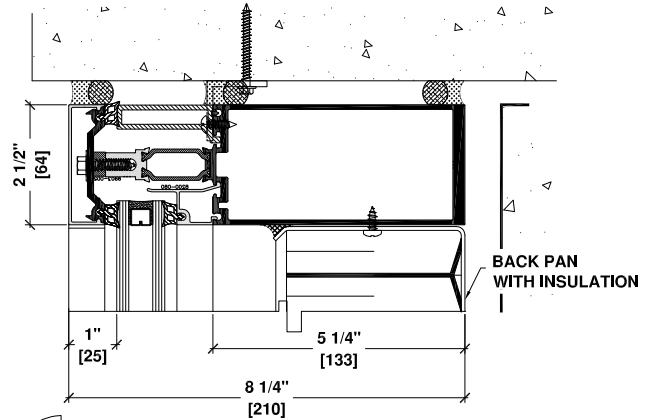




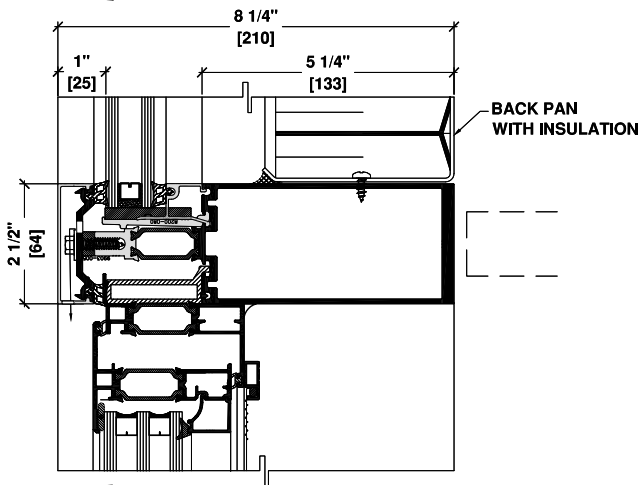
27 SPLIT MULLION
90° OUTSIDE CORNER
SPANDREL



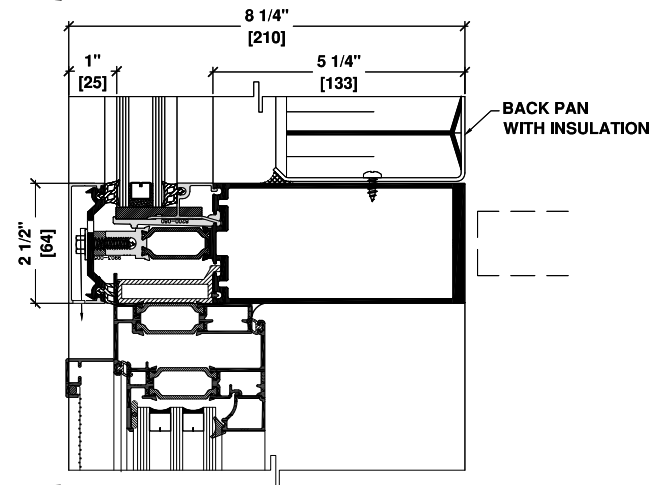
1b 5 1/4" HORIZONTAL TUBE
SPANDREL
PARAPET WALL CONDITION



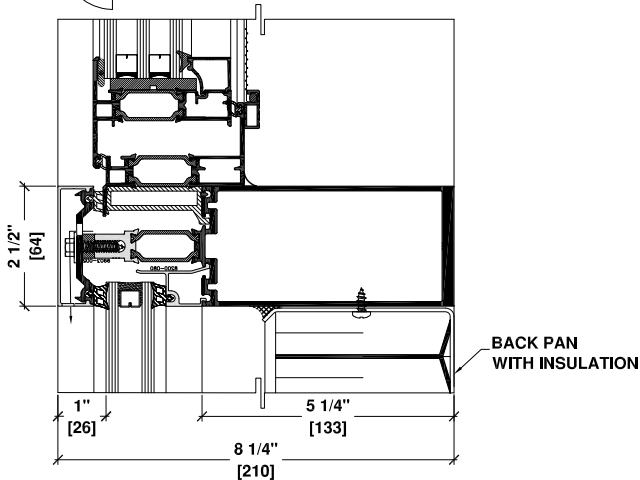
1c 5 1/4" HORIZONTAL TUBE
SPANDREL
SLAB CONDITION CONDITION



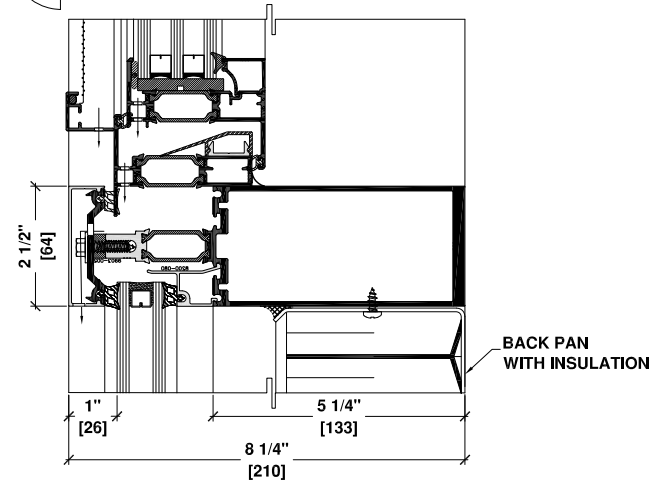
2b 5 1/4" HORIZONTAL TUBE
SPANDREL / VENT OPEN OUT



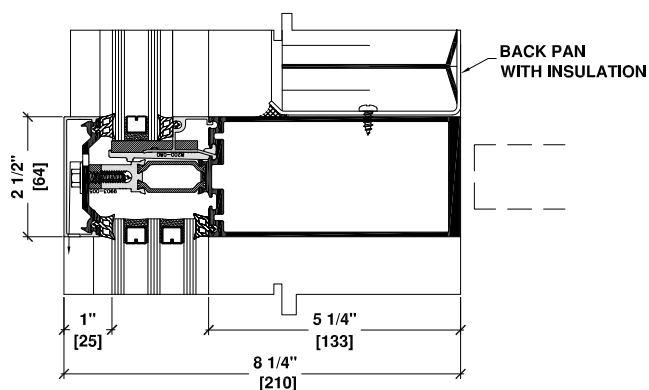
2c 5 1/4" HORIZONTAL TUBE
SPANDREL / VENT OPEN IN



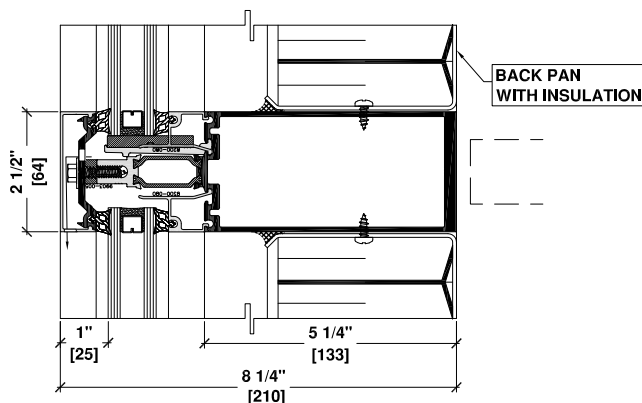
3b 5 1/4" HORIZONTAL TUBE
VENT OPEN OUT / SPANDREL



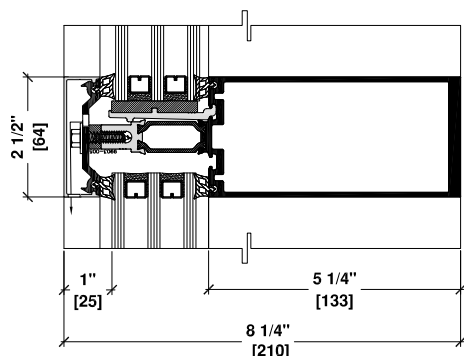
3c 5 1/4" HORIZONTAL TUBE
VENT OPEN IN / SPANDREL



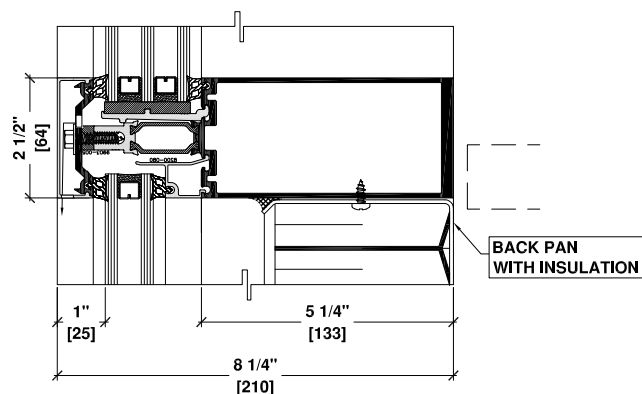
4 5 1/4" HORIZONTAL TUBE
SPANDREL / FIXED GLASS



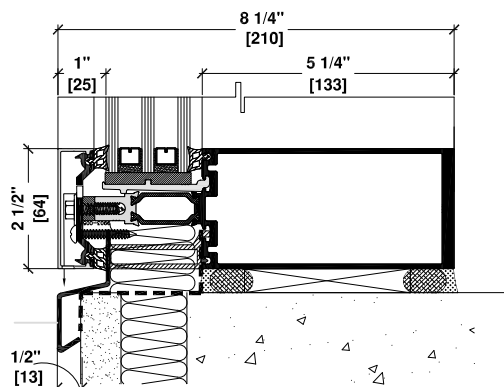
4a 5 1/4" HORIZONTAL TUBE
SPANDREL / SPANDREL



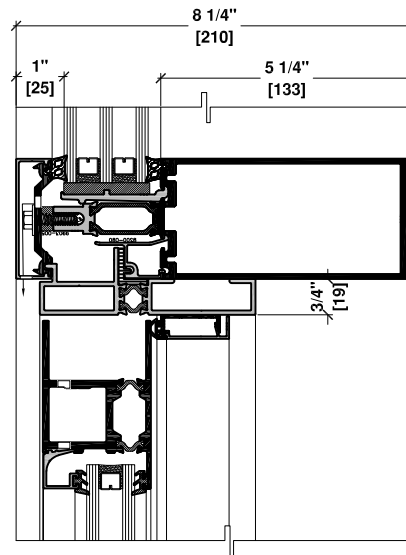
5 5 1/4" HORIZONTAL TUBE
FIXED GLASS / FIXED GLASS



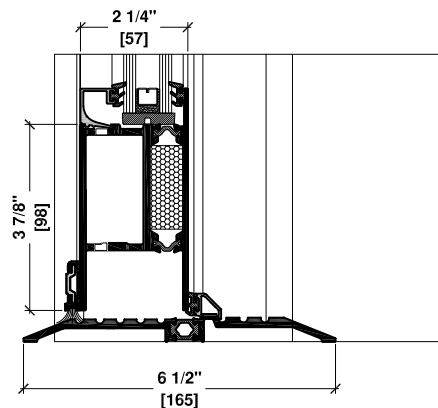
7 5 1/4" HORIZONTAL TUBE
FIXED GLASS / SPANDREL



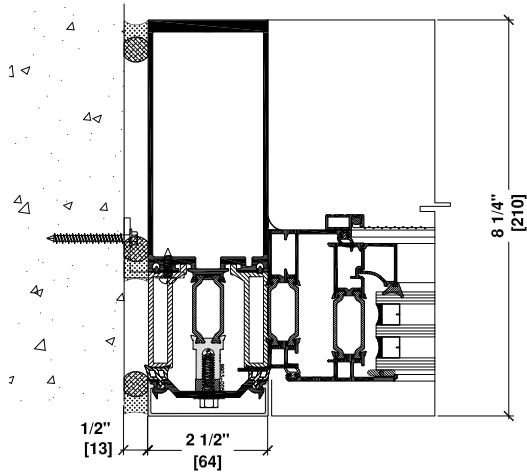
6 5 1/4" HORIZONTAL TUBE
FIXED GLASS
SILL CONDITION



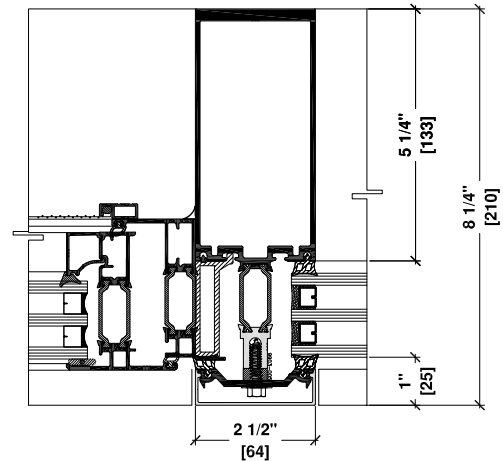
8 5 1/4" HORIZONTAL TUBE
SERIES 4200 DOOR
HEADER CONDITION



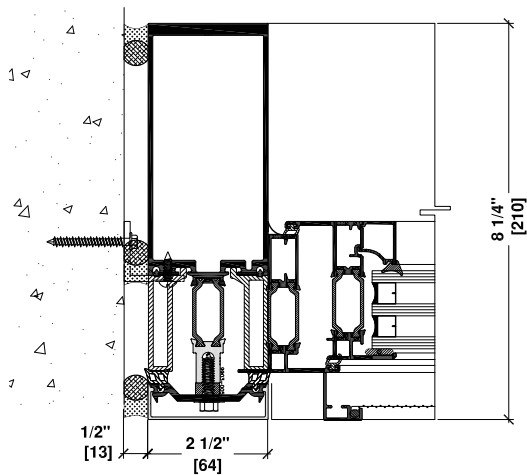
9 SERIES 4200 DOOR
SILL CONDITION



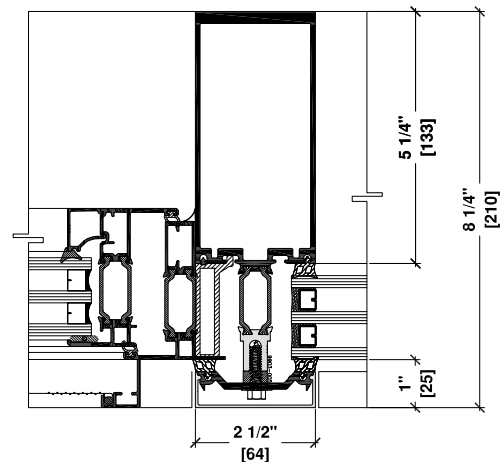
10 5 1/4" VERTICAL TUBE
JAMB CONDITION - VENT
OPEN OUT



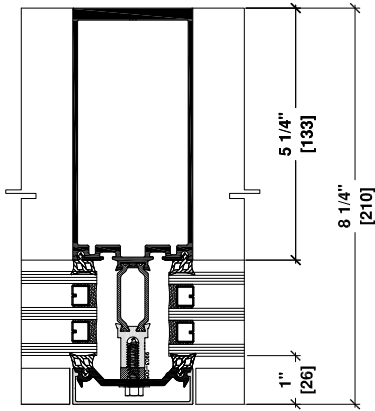
11 5 1/4" VERTICAL TUBE
VENT OPEN OUT
FIXED GLASS



10a 5 1/4" VERTICAL TUBE
JAMB CONDITION - VENT
OPEN IN

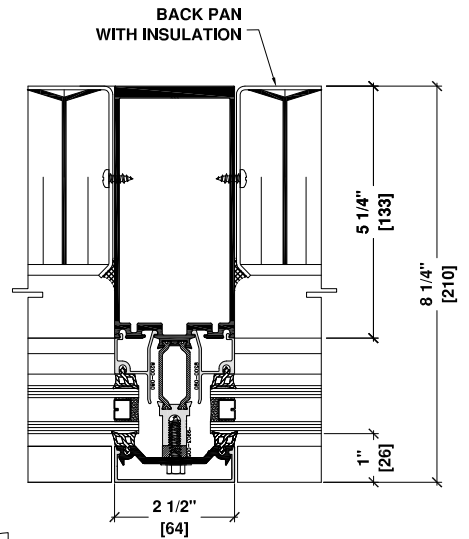


11a 5 1/4" VERTICAL TUBE
VENT OPEN IN
FIXED GLASS



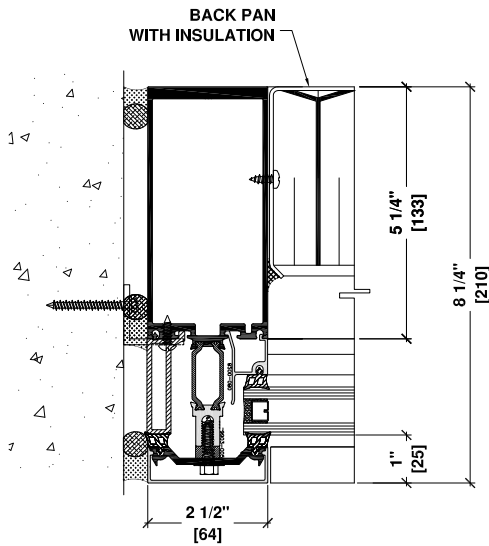
12

**5 1/4" VERTICAL TUBE
FIXED GLASS**



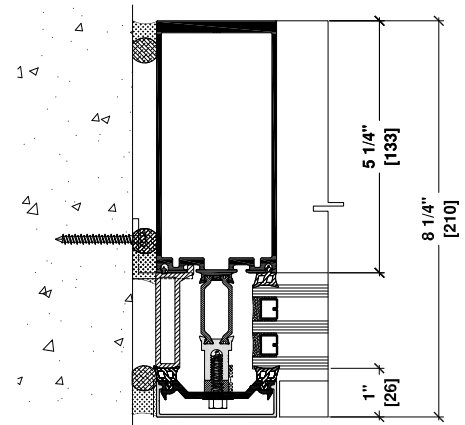
14

**5 1/4" VERTICAL TUBE
SPANDREL - SPANDREL**



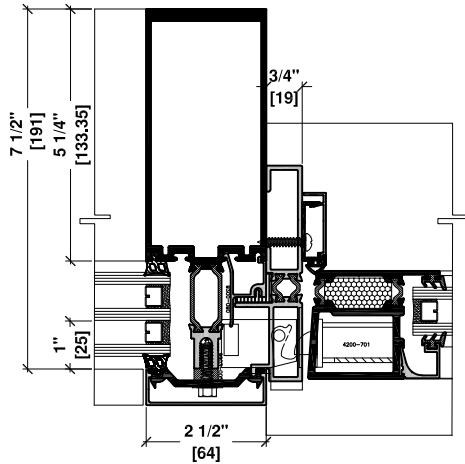
13

**5 1/4" VERTICAL TUBE
SPANDREL
JAMB CONDITION**



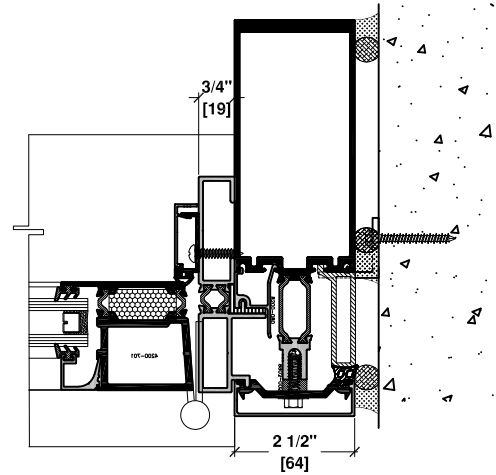
15

**5 1/4" VERTICAL TUBE
FIXED GLASS
JAMB CONDITION**



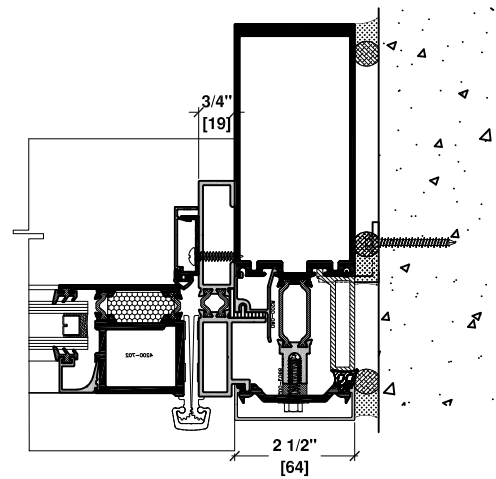
16

**5 1/4" VERTICAL TUBE
SERIES 4200 DOOR
JAMB ADAPTOR CONDITION**



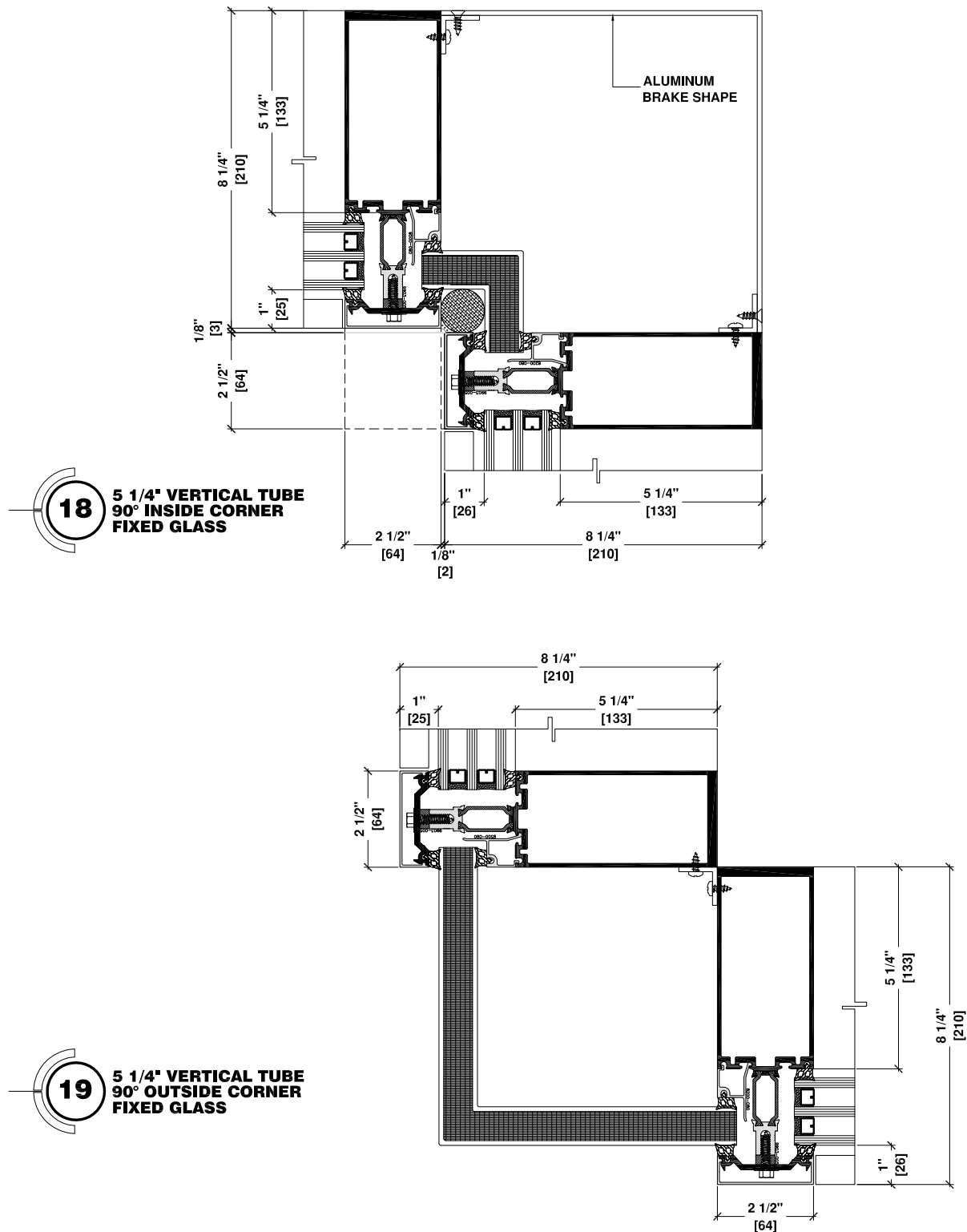
17

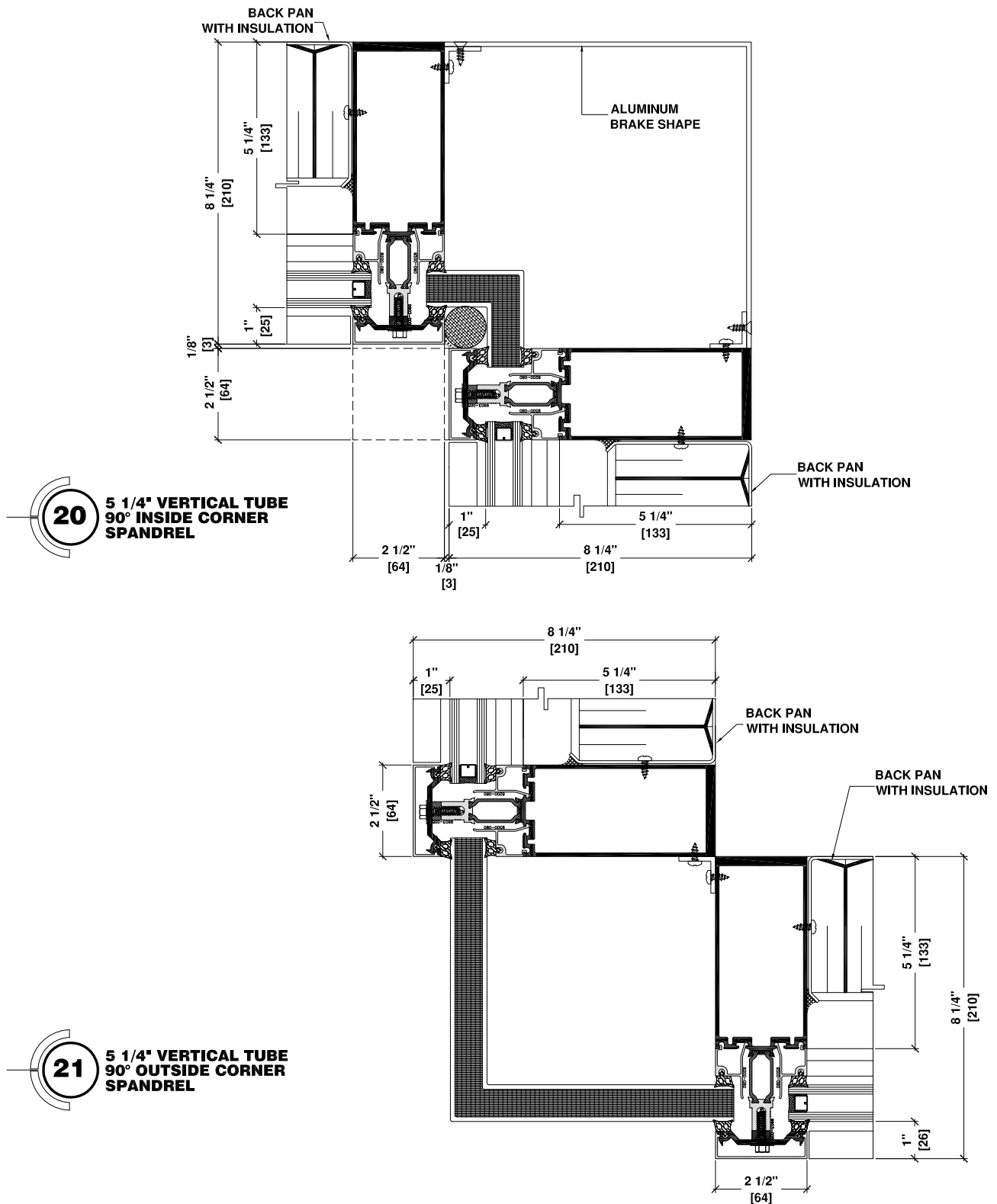
**5 1/4" VERTICAL TUBE
SERIES 4200 DOOR
JAMB ADAPTOR CONDITION**

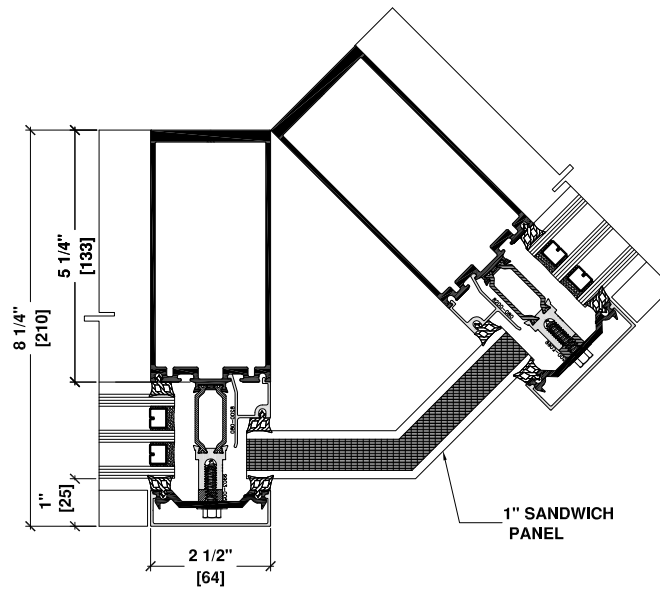


17a

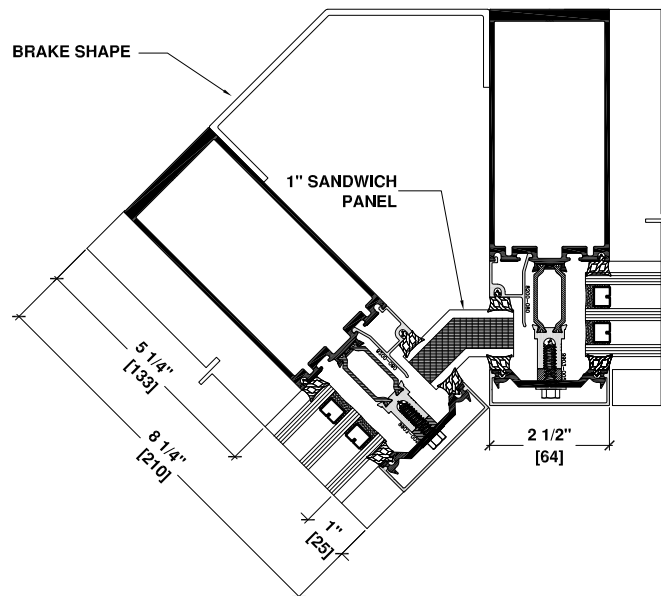
**5 1/4" VERTICAL TUBE
SERIES 4200 DOOR
JAMB ADAPTOR CONDITION**



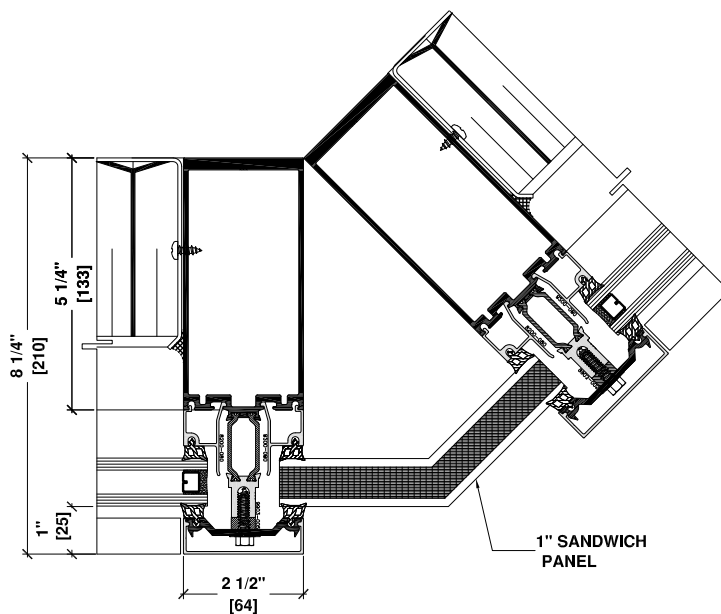




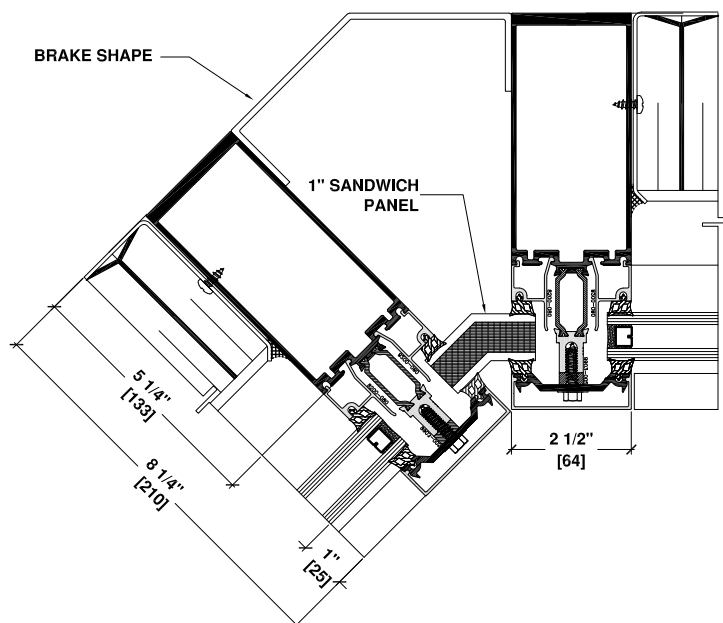
22 5 1/4" VERTICAL TUBE
135° OUTSIDE CORNER
FIXED GLASS



23 5 1/4" VERTICAL TUBE
135° INSIDE CORNER
FIXED GLASS

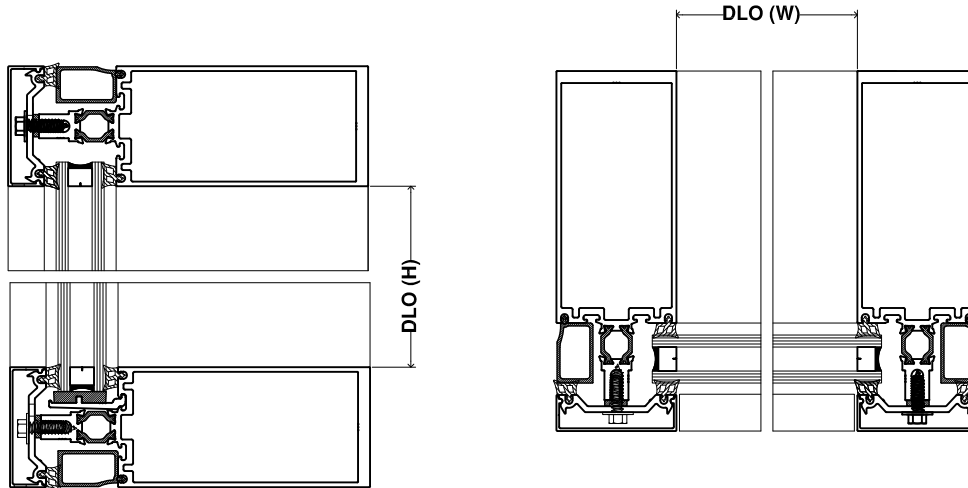


24 5 1/4" VERTICAL TUBE
135° OUTSIDE CORNER WITH
SPANDREL



25 5 1/4" VERTICAL TUBE
135° INSIDE CORNER WITH
SPANDREL

GLASS CALCULATION

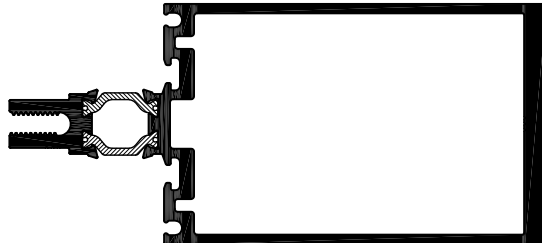


1/4" (6mm) Glass (W)= DLO(W) + 1"(25.4mm)

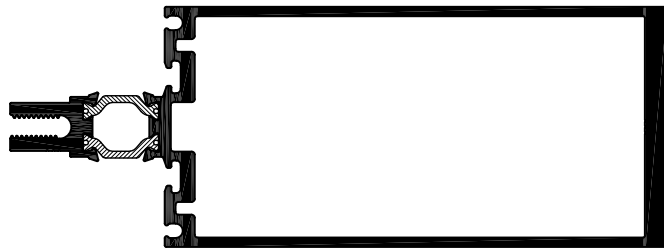
1/2" (12mm) Glass (H)=DLO(H) + 1"(25.4mm)

1" (25.4mm)

Note: use the appropriate spline



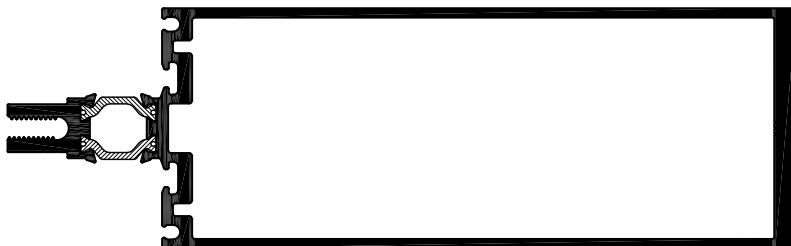
PART #: 8200-703
4" (101.6mm)
MULLION 2 1/2" X 4"
(63.5mm)X(101.6mm)



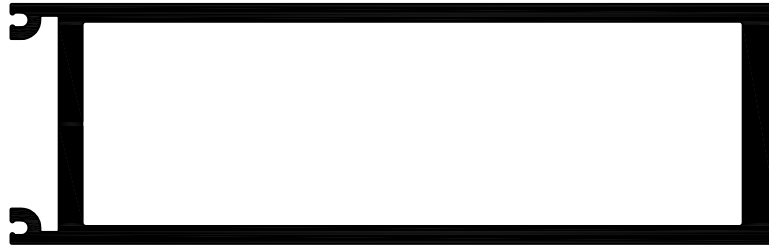
PART #: 8200-704
5 1/4" (133.35mm)
MULLION 2 1/2" X 5 1/4"
(63.5mm)X(133.35mm)



PART #: 8200-720
5 1/4" (133.35mm)
MULLION 2 1/2" X 5 1/4"
(63.5mm) X (133.35mm)



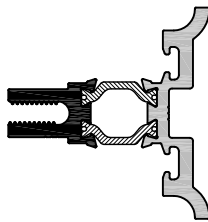
PART #: 8200-705
6 5/8" (168.275mm)
MULLION 2 1/2" X 6 5/8"
(63.5mm)X(168.275mm)



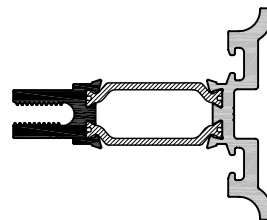
PART #: 8200-007
8" (203.2mm) MULLION
BODY 2 1/2" X 8"
(63.5mm)X(203.2mm)



PART #: 8000-008
10" (254mm) MULLION
BODY 2 1/2" X 10"
(63.5mm)X(254mm)



PART #: 8200-708
USE WITH PART #:
8000-007 OR 8000-008
(SEE DIAGRAM 1)



PART #: 8200-808
USE WITH PART #:
8000-007 OR 8000-008
(SEE DIAGRAM 2)

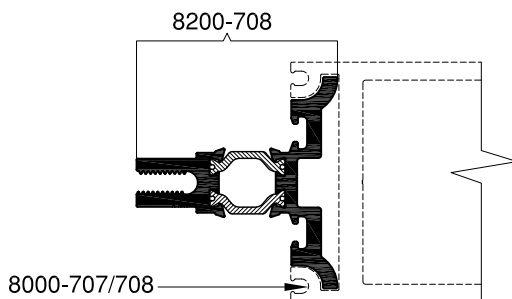


DIAGRAM 1

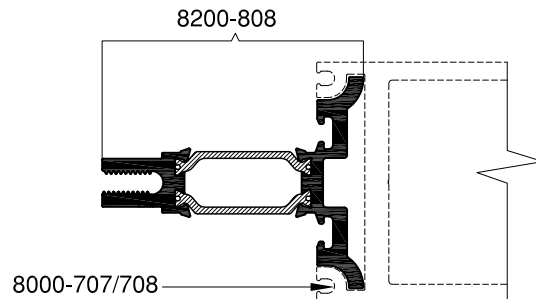
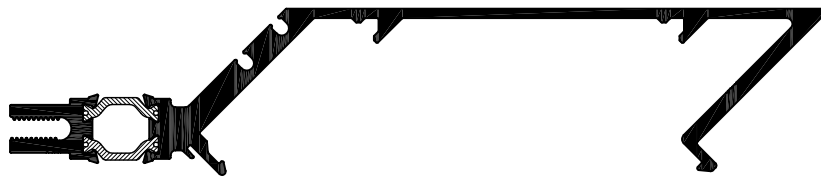


DIAGRAM 2

SYSTEM COMPONENTS-CAPPED



PART# 8200-716
CORNER SPLIT
MALE MULLION
CAPPED FOR 4"
BACK SECTION



PART# 8000-026
CORNER SPLIT
FEMALE MULLION
CAPPED FOR 4"
BACK SECTION



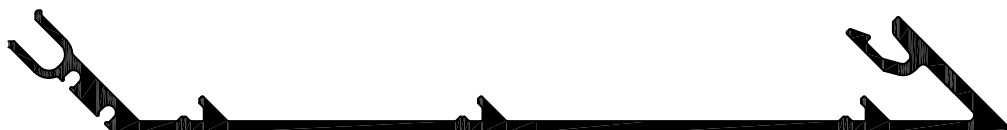
PART# 8200-717
CORNER SPLIT
MALE MULLION
CAPPED FOR 5 1/4"
BACK SECTION



PART# 8000-027
CORNER SPLIT
FEMALE MULLION
CAPPED FOR 5 1/4"
BACK SECTION

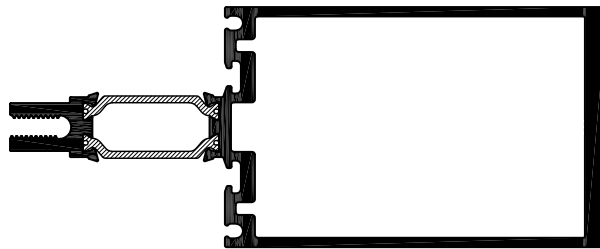


PART# 8200-718
CORNER SPLIT
MALE MULLION
CAPPED FOR
6-5/8" BACK
SECTION

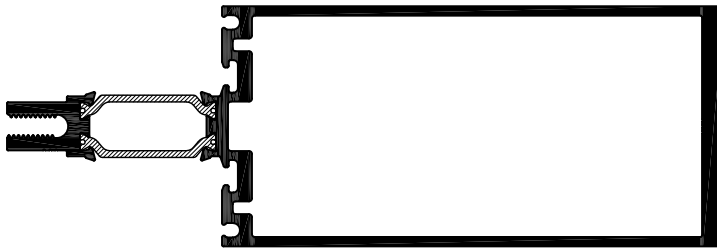


PART# 8000-028
CORNER SPLIT
FEMALE MULLION
CAPPED FOR 6-5/8"
BACK SECTION

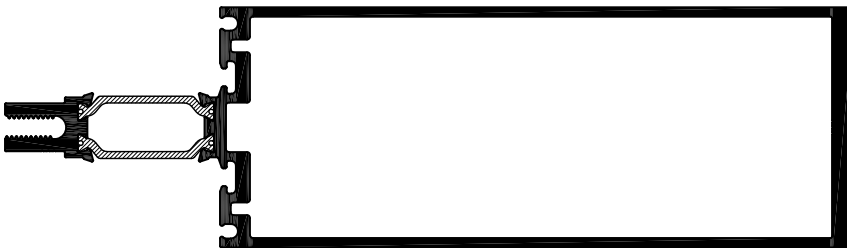
SYSTEM COMPONENTS-CAPPED



PART #: 8200-803
4" (101.6mm) MULLION
2 1/2" X 4"
(63.5mm)X(101.6mm)



PART #: 8200-804
5 1/4" (133.35mm) MULLION
2 1/2" X 5 1/4"
(63.5mm)X(133.35mm)



PART #: 8200-805
6 5/8" (168.275mm) MULLION
2 1/2" X 6 5/8"
(63.5mm)X(168.275mm)



PART# 8200-817
CORNER SPLIT
MALE MULLION
CAPPED FOR 5 1/4"
BACK SECTION



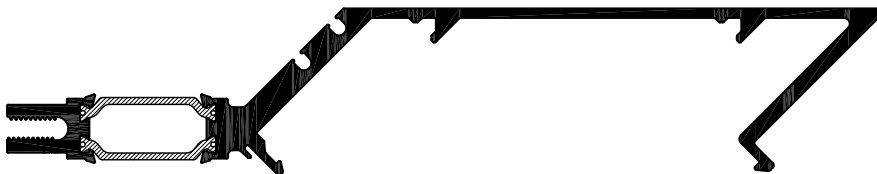
PART# 8000-027
CORNER SPLIT
FEMALE MULLION
CAPPED FOR 5 1/4"
BACK SECTION



PART# 8200-818
CORNER SPLIT
MALE MULLION
CAPPED FOR
6-5/8" BACK
SECTION



PART# 8000-028
CORNER SPLIT
FEMALE MULLION
CAPPED FOR 6-5/8"
BACK SECTION

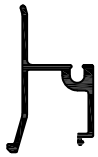


PART# 8200-816
CORNER SPLIT
MALE MULLION
CAPPED FOR 4"
BACK SECTION



PART# 8000-026
CORNER SPLIT
FEMALE MULLION
CAPPED FOR 4"
BACK SECTION

SYSTEM COMPONENTS-CAPPED



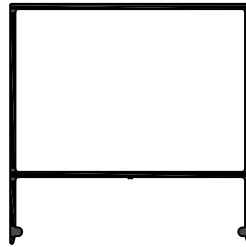
PART #: 8200-080
ADAPTOR SINGLE
GLAZED 1/4" (6.35mm)



PART #: 8000-032
SNAP ON CAP
1 1/2" (38.1mm)
● USE WITH 8200-600 &
8200-601 PRESSURE
PLATE



PART #: 8200-081
SINGLE GLASS ADAPTOR
FOR 11/16" GLASS.



PART #: 8000-034
SNAP ON CAP
2 1/2" (63.5mm)
● USE WITH 8200-600 &
8200-601 PRESSURE
PLATE



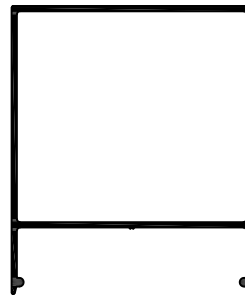
PART #: 8200-083
90° CORNER ADAPTOR
SINGLE GLAZED
1/4" (6mm)



PART #: 8200-600
PRESSURE PLATE
DRY GLAZING



PART #: 8200-601
PRESSURE PLATE
DRY GLAZING



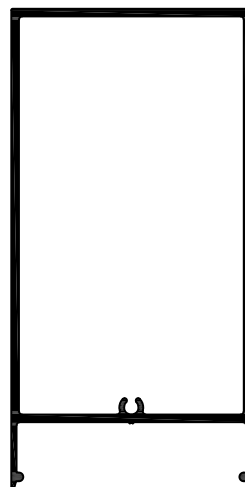
PART #: 8000-035
SNAP ON CAP
3" (76.2mm)
● USE WITH 8200-600 &
8200-601 PRESSURE
PLATE
● FASTEN TO P.P. USING
F.H. SCREWS



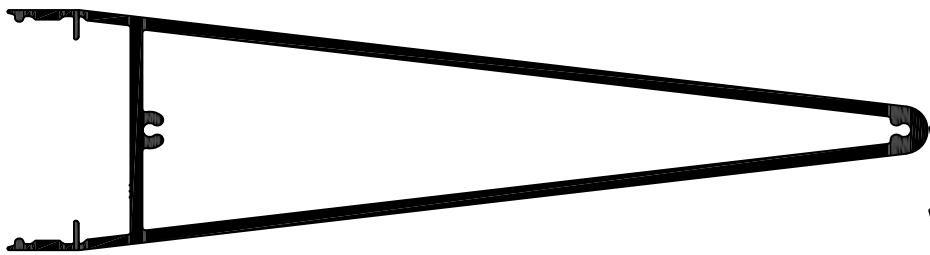
PART #: 8000-030
SNAP ON CAP 3/4" (19mm)
● USE WITH 8200-600 &
8200-601 PRESSURE
PLATE



PART #: 8000-031
SNAP ON CAP
1" (25.4mm)
● USE WITH 8200-600 &
8200-601 PRESSURE
PLATE



PART #: 8000-037
SNAP ON CAP
5" (127mm)
● USE WITH 8200-600 &
8200-601 PRESSURE
PLATE
● FASTEN TO P.P. USING
F.H. SCREWS

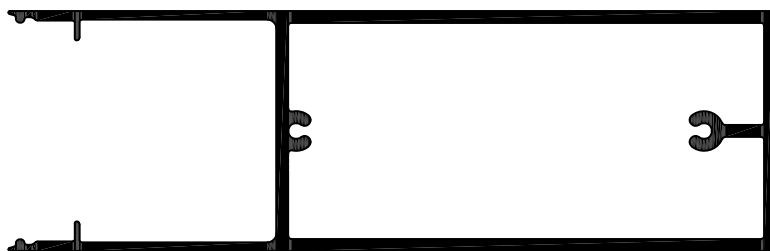


PART #:8000-045

SLOPED CAP

9 1/2" (241.3mm)

- USE WITH 8200-601 PRESSURE PLATE ONLY
- FASTEN TO P.P. USING F.H. SCREWS

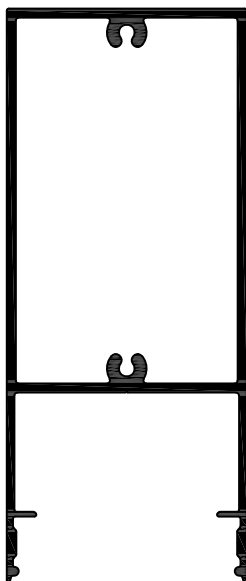


PART #:8000-039

SNAP ON CAP

8" (203.2mm)

- USE WITH 8200-601 PRESSURE PLATE ONLY
- FASTEN TO P.P. USING F.H. SCREWS



PART #:8000-038

SNAP ON CAP

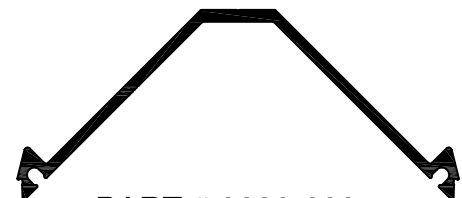
6" (152.4mm)

- USE WITH 8200-601 PRESSURE PLATE ONLY
- FASTEN TO P.P. USING F.H. SCREWS



PART #:8000-040

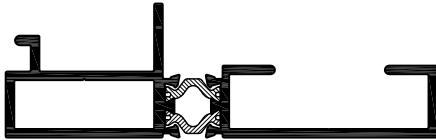
SNAP ON CAP FOR
90° OUTSIDE
CORNER



PART #:8200-608
PRESSURE PLATE
FOR 90° OUTSIDE
CORNER



PART #:8000-046
5" X 3/4" SNAP ON CAP
USE WITH DOUBLE
MULLION & DOUBLE
PRESSURE PLATE



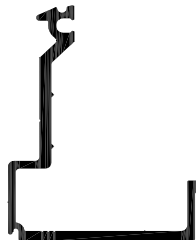
PART #: 8000-701
DOOR ADAPTOR
USE 9906-401 PVC
DOOR ADAPTOR



PART #: 8000-075
DOOR STOP BASE



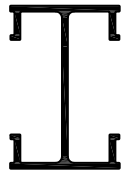
PART #: 8000-076
DOOR STOP COVER



PART #: 8200-071
FLUSH DOOR
ADAPTOR



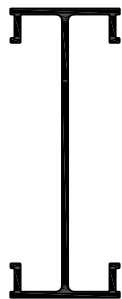
PART #: 8000-072
FLUSH DOOR
ADAPTOR CAP



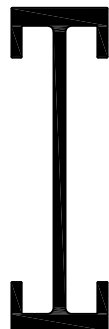
PART #:8000-613-10
ALUMINUM REINFORCING
FOR 4" (8200-703) 24'-2" LONG



PART #:8000-614-10
ALUMINUM REINFORCING
FOR 5 1/4" (8200-704) 24'-2"
LONG




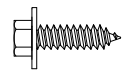
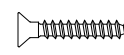
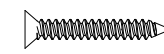
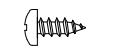


PART #:8000-615-10
ALUMINUM REINFORCING
FOR 6 5/8" (8200-705) 24'-2"
LONG

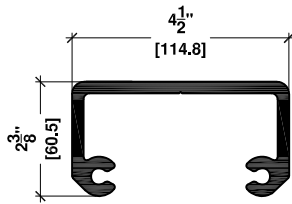


PART #:8000-617-10
ALUMINUM REINFORCING
FOR 8" (8200-007) & 10"
(8200-008) 24'-2" LONG

Note:

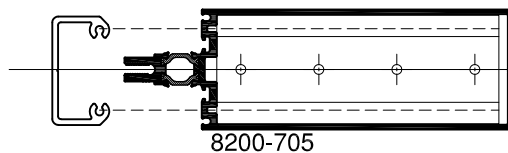
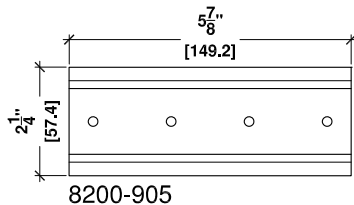
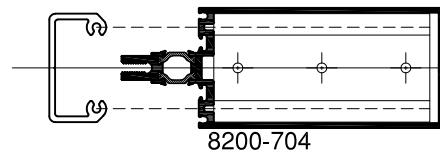
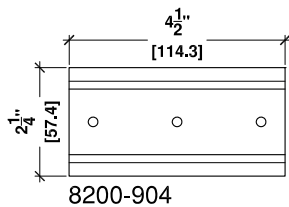
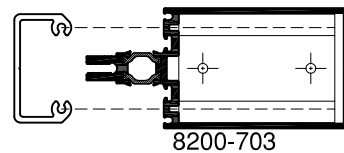
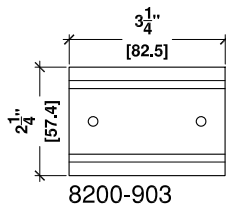
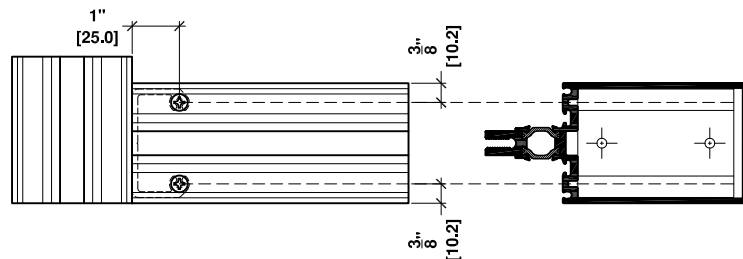
Typical mullion reinforcing should be connected through the curtain wall neck using two rows of #12 screws spaced at 12" O.C. Additional screws should be added on the sides at all horizontal mullion locations. Note that the above reinforcing connection is only to be used as a guideline. Each project will need to be reviewed by the project engineer and the reinforcing connection designed accordingly.

	DESCRIPTION	APPLICATION	QTY/JOINT
	PART #: 9902-503 # 10 X 1" PH SCREW	FASTEN SHEAR BLOCK TO VERTICAL	2-3
	PART #: 9902-005 # 1/4"-20 X 7/8" HEX WASHER MACHINE	FASTEN PRESSURE PLATE TO MULLION	@6" C/C
	PART #: 9902-513 # 10 X 1" FH SCREW	FASTEN SINGLE GLAZED ADAPTOR	@4" C/C
	PART #: 9902-514 # 10-1 1/2" FH SCREW	FASTEN HORIZONTAL TO SHEAR BLOCK	2@ EACH END
	PART #: 9902-400 SCREW #10 X 1/2" PH ZINC	FASTEN MULLION TO BACKPAN	@6" C/C
	PART #:8200-920 S/U HORIZONTAL GLASS HOLDER @ 4"		PART #:8200-921 S/U HORIZONTAL TRIPLE GLAZED GLASS HOLDER @ 4"



SERIES 8200 CAPTURED SHEAR BLOCK
PART #: 8200-903 FOR 4" MULLION
PART #: 8200-904 FOR 5 1/4" MULLION
PART #: 8200-905 FOR 6 5/8" MULLION

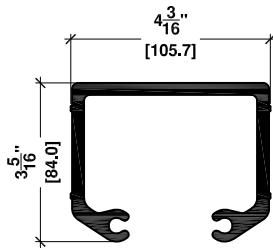
SHEAR BLOCK LOCATION



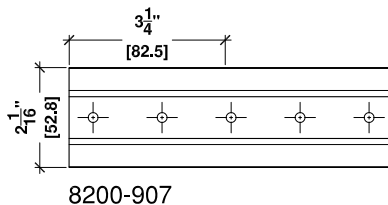
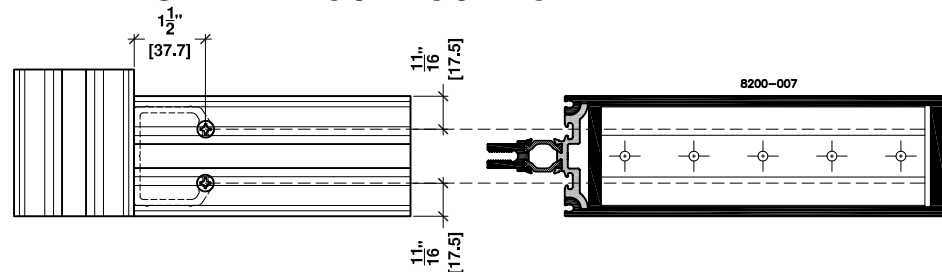
SERIES 8200 CAPTURED SHEAR BLOCK

PART #: 8000-908 FOR 10" MULLION

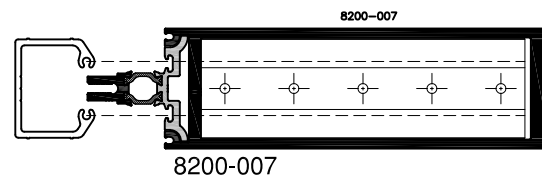
PART #: 8200-907 FOR 8" MULLION



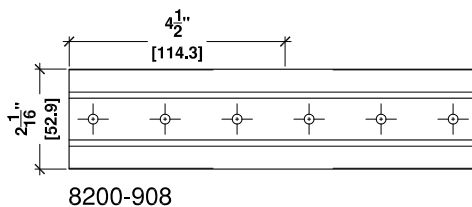
SHEAR BLOCK LOCATION



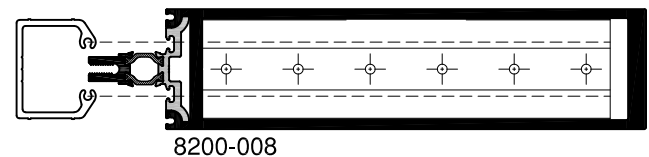
8200-907



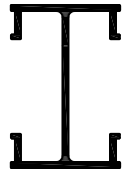
8200-007



8200-908



8200-008



PART #:8000-963-10
SPLICE PLATE FOR 4"
(8200-703) @ 24" LONG



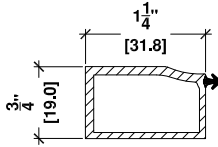
PART #:8000-964-10
SPLICE PLATE FOR 5 1/4"
(8200-704) @ 24" LONG



PART #:8000-965-10
SPLICE PLATE FOR 6 5/8"
(8200-705) @ 24" LONG

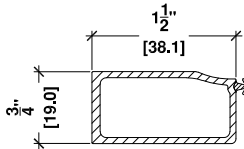
Note:

Typical mullion splicing should be approximately 24" long and be connected through the sides of the curtain wall using four rows of #12 screws spaced at 4" O.C. Note that the above splice connection is only to be used as a guideline. It is recommended that, whenever possible, splices are located at the point of least stress. Stresses at the splice location can vary substantially and must be reviewed by the project engineer and designed accordingly.



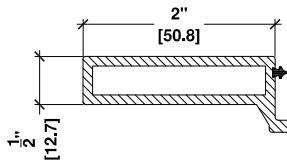
PART #: 9906-108
POCKET FILLER
STANDARD

APPLY INTO THE OUTSIDE
POCKET OF EACH
PERIMETER



PART #: 9906-109
1.5" POCKET FILLER
FOR 1-1/4" S/U

APPLY INTO THE OUTSIDE
POCKET OF EACH
PERIMETER



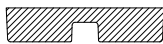
PART #: 9906-105
POCKET FILLER FOR
TRIPLE GLAZED S/U

APPLY INTO THE OUTSIDE
POCKET OF EACH
PERIMETER



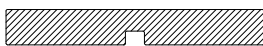
PART #: 9903-105
1/4" GLAZING
SPLINE

APPLY TO MULLION
AND DRY GLAZED
PRESSURE PLATE



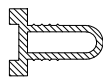
PART #: 9903-206
SETTING BLOCK

2 PER DLO



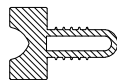
PART #: 9903-209
SETTING BLOCK FOR
TRIPLE GLAZED

2 PER DLO



PART #: 9903-001
1/8" THERMAL BREAK
(BLACK)

THERMAL BARRIER



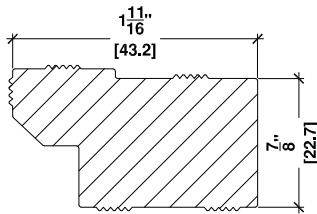
PART #: 9903-005
1/4" THERMAL BREAK
(FOR TRIPLE GLAZED)

THERMAL BARRIER



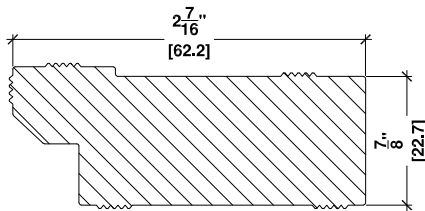
PART #: 9903-207
SETTING BLOCK FOR
SINGLE GLASS

2 PER DLO



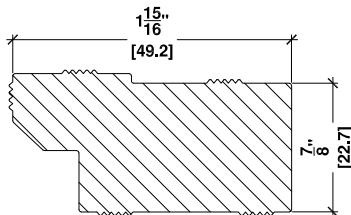
PART #: 9903-307
CORNER PLUG FOR
1" SEALED UNIT

APPLY ONE TO
EACH CORNER



PART #: 9903-308
CORNER PLUG FOR
TRIPLE GLAZED S/U

APPLY ONE TO
EACH CORNER



PART #: 9903-309
CORNER PLUG FOR
1-1/4" SEALED UNIT

APPLY ONE TO
EACH CORNER



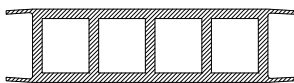
PART #: 9906-401
PVC DOOR ADAPTOR

APPLY TO MULLION WHEN
USING 8000-701 THERMALLY
BROKEN ADAPTOR



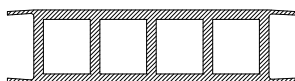
PART #: 9903-143
BULB-SEAL FOR
DOOR STOP

APPLY TO THE DOOR
STOP



PART #: 9903-212
SPACER FOR SERIES
8200

APPLY INTO NECK OF
MULLION WHERE
VERTICAL & HORIZONTAL
MULLIONS INTERSECT



PART #: 9903-214
SPACER FOR SERIES
8200 TRIPLE GLAZED

APPLY INTO NECK OF
MULLION WHERE
VERTICAL & HORIZONTAL
MULLIONS INTERSECT

AWSF TEST RESULTS

TEST	RESULTS
Air Leakage Rate Test Pressure 240 Pa (5.20 psf)	<0.1 L/sec/m ² (<0.01 cfm/ft ²)
Water Pressure Achieved	1440 Pa (30.0 psf)
Maximum Structural Pressure Achieved	Test Pressure of 4320 Pa (90.23 psf) Positive load deflection - 0.8 mm (0.03 in) Negative load deflection - 0.3 mm (0.01 in)
Force Entry Resistance, ASTM F588, Grade 40	Pass

NFRC TEST RESULTS

ITEM	VALUE
Standardized U-Factor	0.32 Btu/hr-ft ² -F

WIND LOAD CHART ASSUMPTIONS

1. SIMPLY SUPPORTED ENDS
2. UNIFORM WIND LOADING IN PSF
3. 100% WIND LOAD FOR STRENGTH
4. 75% WIND LOAD FOR DEFLECTION
5. ALUMINUM ALLOY 6063-T6
6. I= Moment of Inertia
7. S= Section Modulus

DEAD LOAD CHARTS

1. SIMPLY SUPPORTED ENDS
2. UNIFORM WIND IN LBS/FOOT
3. DEAD LOAD APPLIED AT 1/4" POINTS
4. MAXIMUM ALLOWABLE DEFLECTION OF 0.118"
5. CALCULATE GLASS HEIGHT FOR THE GIVEN SPAN FROM THE CHART

Example : For span of 5'-0" using 2-1/2" x 4" Mullion

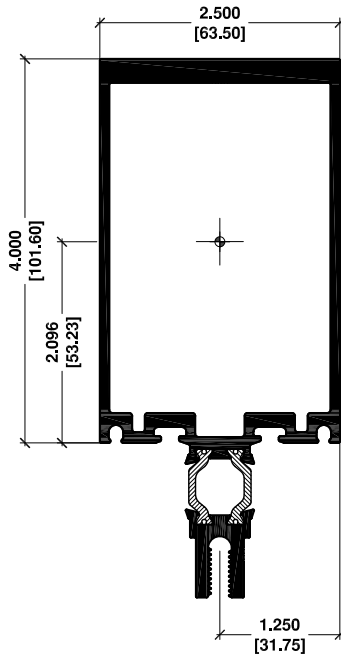
- a. Find the dead load chart for the horizontal mullion you are using for your wall.
- b. Locate span length point on the dead load chart.
- c. Draw vertical line from this point to meet the dead load curve
- d. Draw horizontal line from the meeting point to weight eg. (120lb/ft)axis
- e. This will determine the weight/ft this span can take
- f . Divide the weight (120lb/ft) by the selected glass weight, provided by the glass supplier eg. (6lb/ft), $(120\text{lb/ft} \div 6\text{lb/ft})$
- g. The result will be (20'-0")the max. Height you can use for this span

Note:

1. The Building and Safety Codes govern the design and the glazing type for Building, Curtain Walls, Windows and Entrances.
Commdoor Aluminum has no control and no responsibility for hardware, Glass, Glazing material, Anchoring and Vapour Barrier.
2. The following Charts are for information purpose only. Final structural design to be determined by Structural Engineer

8200-703 MULLION

4" x 2-1/2" (101.6mm x 63.5mm)



$$A = 1.840 \text{ IN}^2$$

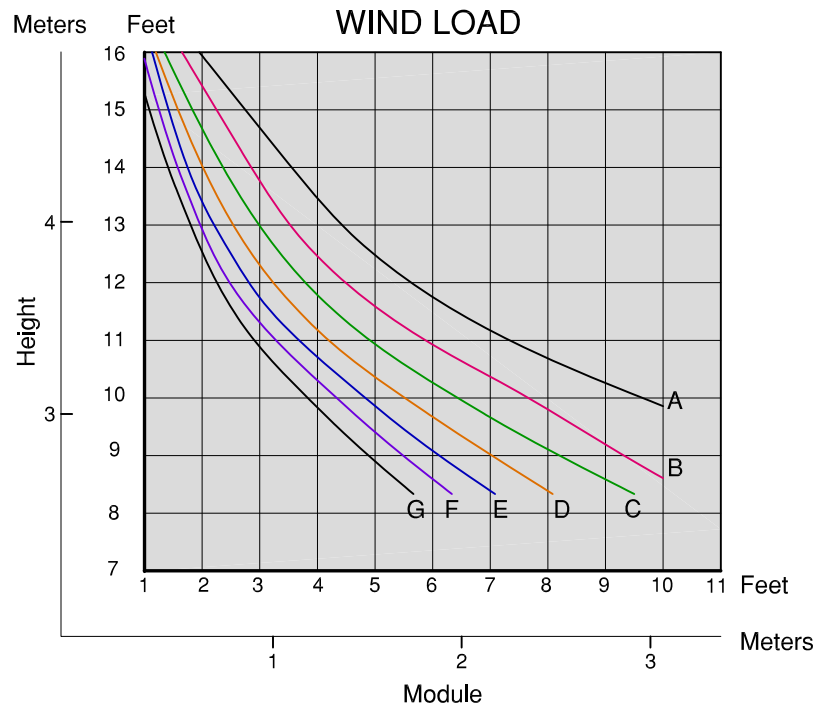
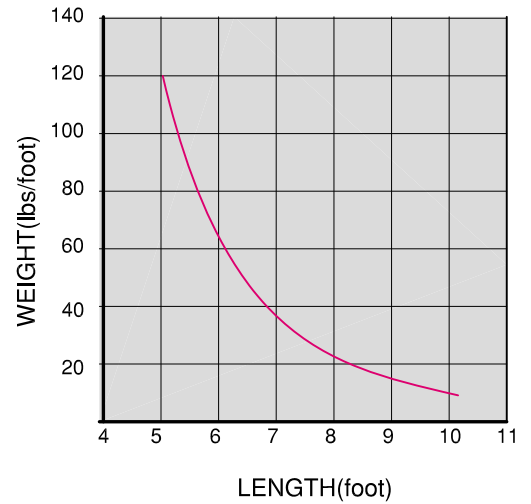
$$I_x = 4.682 \text{ IN}^4$$

$$S_x = 2.001 \text{ IN}^3$$

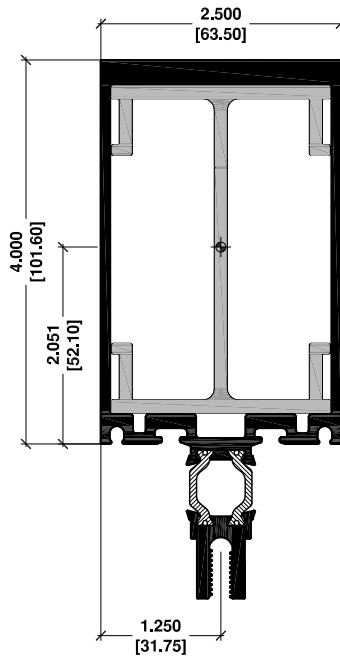
- A = 20 psf (0.95 KPa)
- B = 25 psf (1.2 KPa)
- C = 30 psf (1.4 KPa)
- D = 35 psf (1.7 KPa)
- E = 40 psf (1.9 KPa)
- F = 45 psf (2.1 KPa)
- G = 50 psf (2.4 KPa)

" For information purposes only "
Not for design.

DEAD LOAD



8200-703 REINFORCED MULLION
2 1/2" x 4" (63.5mm x 101.6mm)



8200-703

$$A = 1.840 \text{ IN}^2$$

$$I_x = 4.682 \text{ IN}^4$$

$$S_x = 2.001 \text{ IN}^3$$

8000-613

$$A = 1.305 \text{ IN}^2$$

$$I_x = 2.410 \text{ IN}^4$$

$$S_x = 1.48 \text{ IN}^3$$

Total Properties

$$I_x = 7.063 \text{ IN}^4$$

$$S_x = 3.402 \text{ IN}^3$$

$$A = 20 \text{ psf (0.95 KPa)}$$

$$B = 25 \text{ psf (1.2 KPa)}$$

$$C = 30 \text{ psf (1.4 KPa)}$$

$$D = 35 \text{ psf (1.7 KPa)}$$

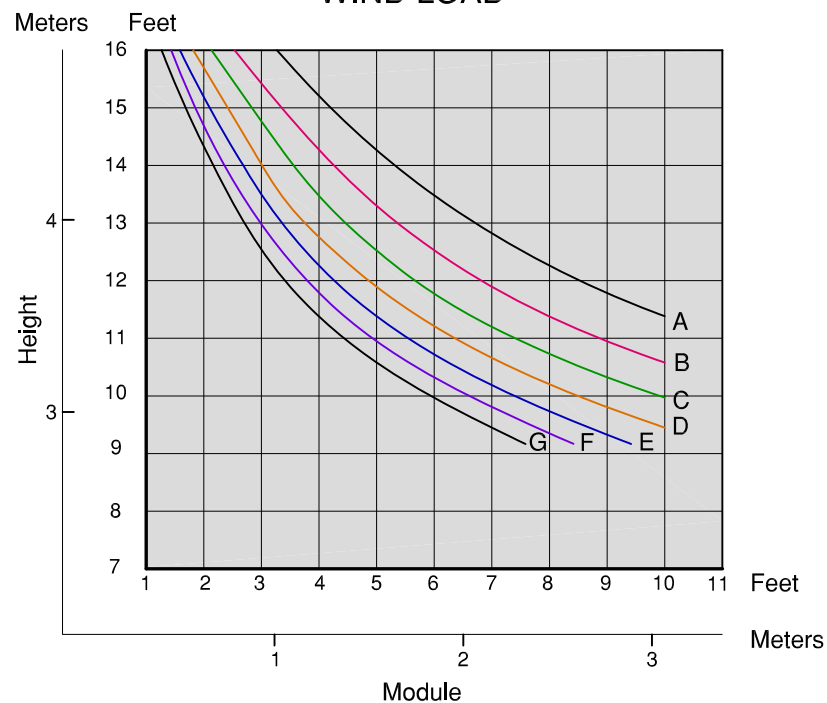
$$E = 40 \text{ psf (1.9 KPa)}$$

$$F = 45 \text{ psf (2.1 KPa)}$$

$$G = 50 \text{ psf (2.4 KPa)}$$

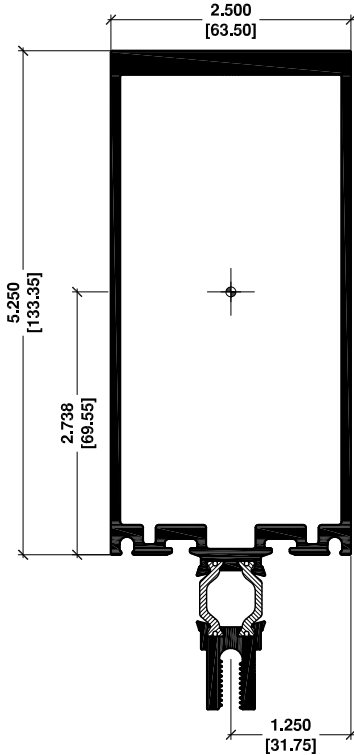
" For information purposes only "
Not for design.

WIND LOAD



8200-704 MULLION

5-1/4" x 2-1/2" (133.35mm x 63.5mm)



$$A = 2.085 \text{ IN}^2$$

$$I_x = 8.837 \text{ IN}^4$$

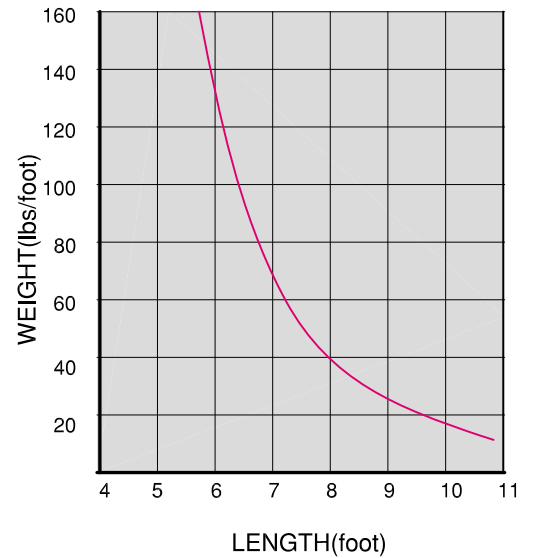
$$S_x = 2.992 \text{ IN}^3$$

- A = 20 psf (0.95 KPa)
- B = 25 psf (1.2 KPa)
- C = 30 psf (1.4 KPa)
- D = 35 psf (1.7 KPa)
- E = 40 psf (1.9 KPa)
- F = 45 psf (2.1 KPa)
- G = 50 psf (2.4 KPa)

" For information purposes only "

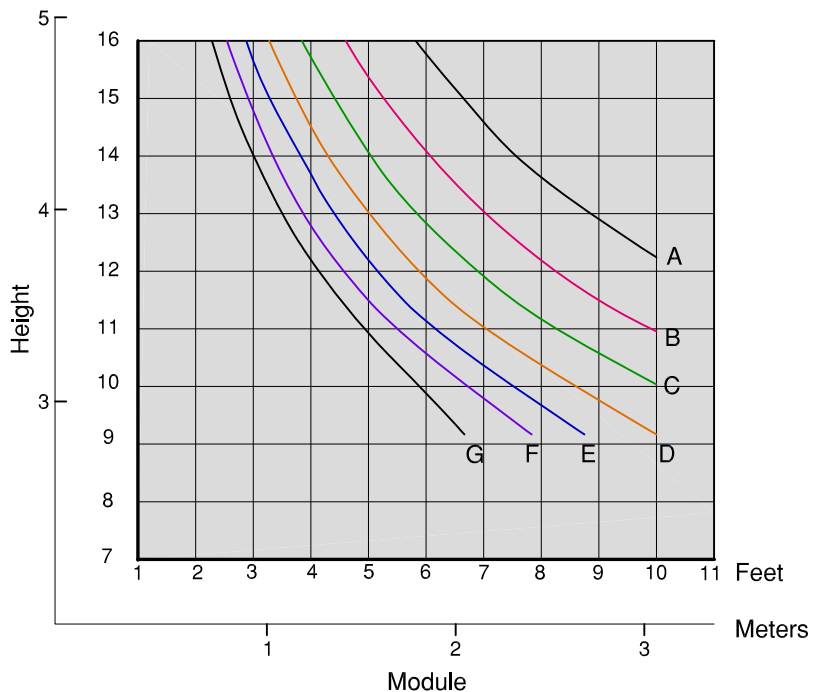
Not for design.

DEAD LOAD

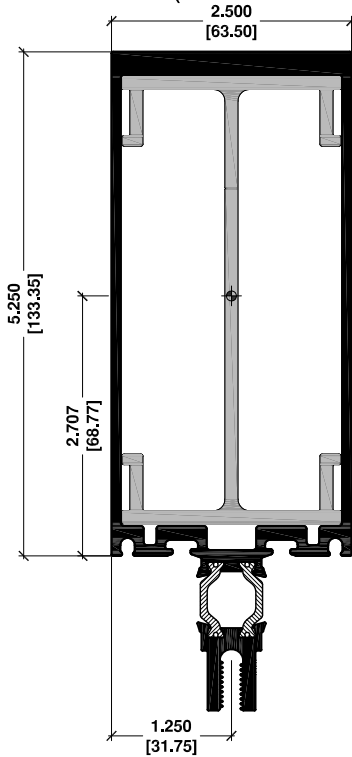


Meters Feet

WIND LOAD



8200-704 REINFORCED MULLION
2 1/2" x 5 1/4" (63.5mm x 133.35mm)



8200-704
A = 2.085 IN²
I_x = 8.837 IN⁴
S_x = 2.992 IN³

8000-614
A = 1.46 IN²
I_x = 5.033 IN⁴
S_x = 2.09 IN³

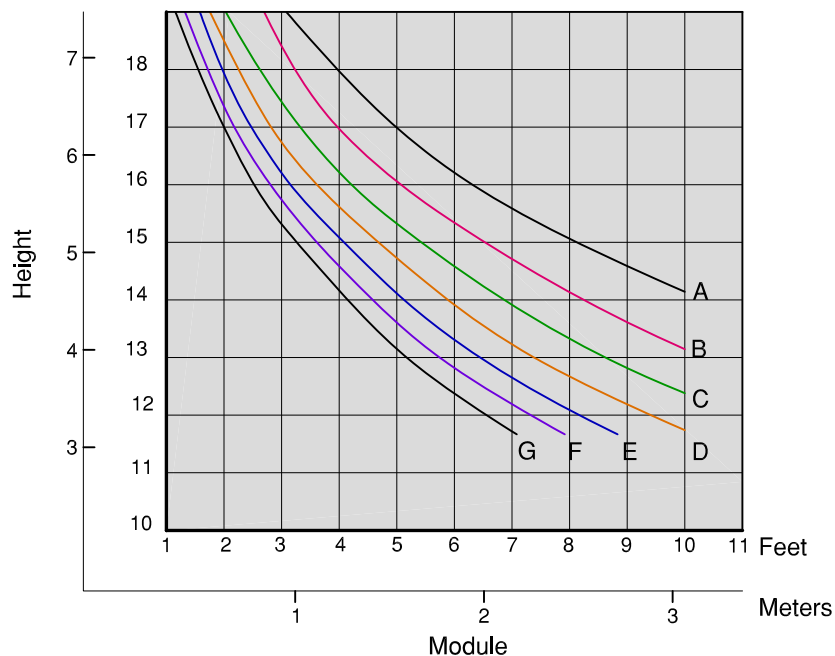
Total Properties
I_x = 13.651 IN⁴
S_x = 5.032 IN³

A = 20 psf (0.95 KPa)
B = 25 psf (1.2 KPa)
C = 30 psf (1.4 KPa)
D = 35 psf (1.7 KPa)
E = 40 psf (1.9 KPa)
F = 45 psf (2.1 KPa)
G = 50 psf (2.4 KPa)

" For information purposes only "
Not for design.

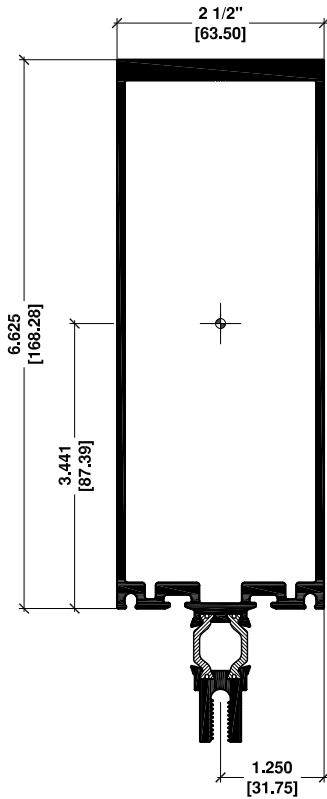
WIND LOAD

Meters Feet



8200-705 MULLION

6-5/8" x 2-1/2" (168.28mm x 63.5mm)



$$A = 2.354 \text{ IN}^2$$

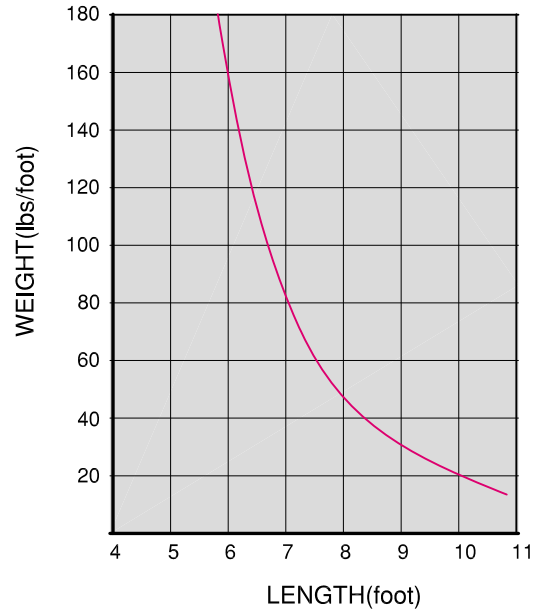
$$I_x = 15.231 \text{ IN}^4$$

$$S_x = 4.125 \text{ IN}^3$$

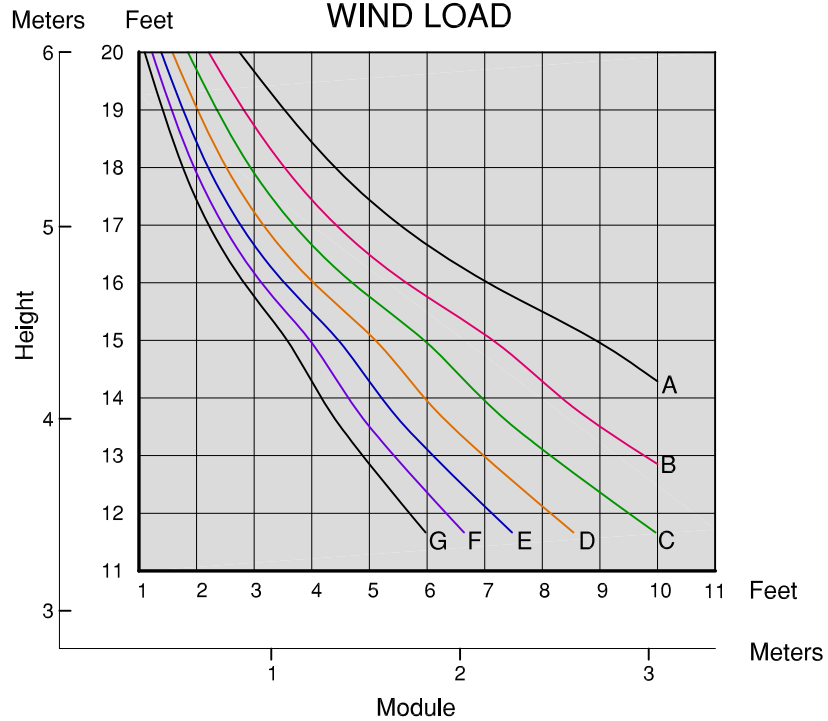
- A = 20 psf (0.95 KPa)
- B = 25 psf (1.2 KPa)
- C = 30 psf (1.4 KPa)
- D = 35 psf (1.7 KPa)
- E = 40 psf (1.9 KPa)
- F = 45 psf (2.1 KPa)
- G = 50 psf (2.4 KPa)

" For information purposes only "
Not for design.

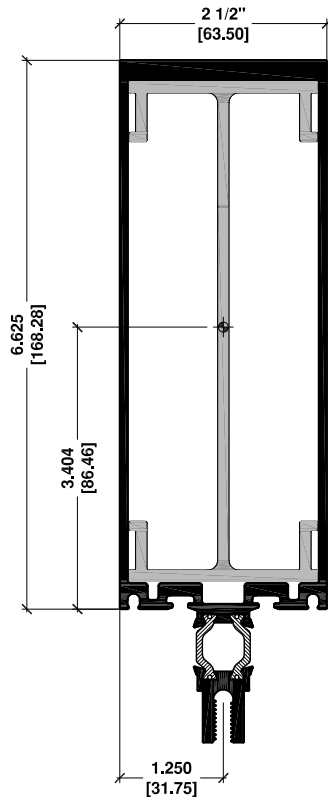
DEAD LOAD



WIND LOAD



8200-705 REINFORCED MULLION
2 1/2" x 6 5/8" (50.8mm x 168.28mm)



8200-705

$$A = 2.354 \text{ IN}^2$$

$$I_x = 15.231 \text{ IN}^4$$

$$S_x = 4.125 \text{ IN}^3$$

8000-615

$$A = 1.633 \text{ IN}^2$$

$$I_x = 9.242 \text{ IN}^4$$

$$S_x = 3.02 \text{ IN}^3$$

Total Properties

$$I_x = 23.324 \text{ IN}^4$$

$$S_x = 7.136 \text{ IN}^3$$

$$A = 20 \text{ psf (0.95 KPa)}$$

$$B = 25 \text{ psf (1.2 KPa)}$$

$$C = 30 \text{ psf (1.4 KPa)}$$

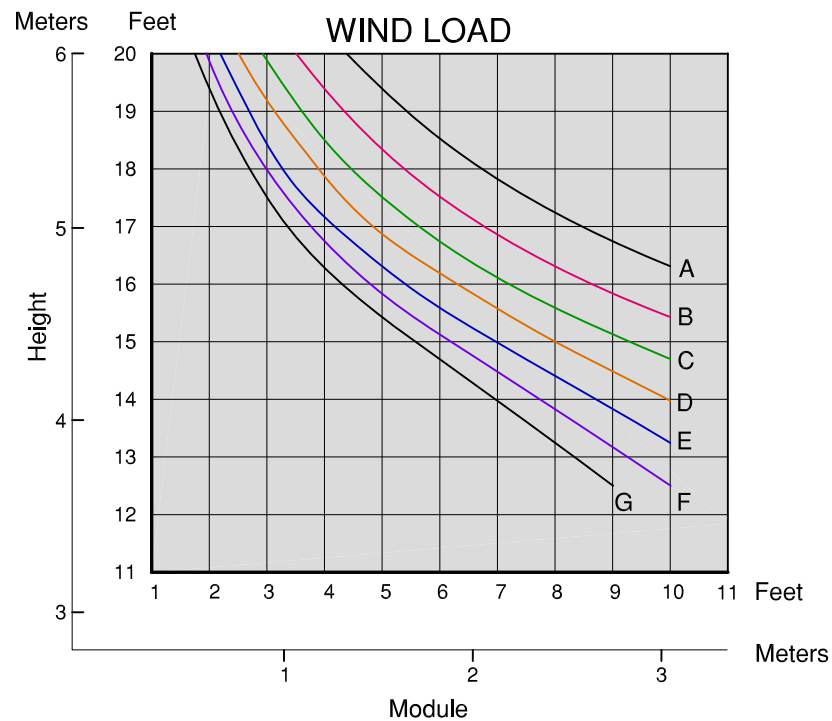
$$D = 35 \text{ psf (1.7 KPa)}$$

$$E = 40 \text{ psf (1.9 KPa)}$$

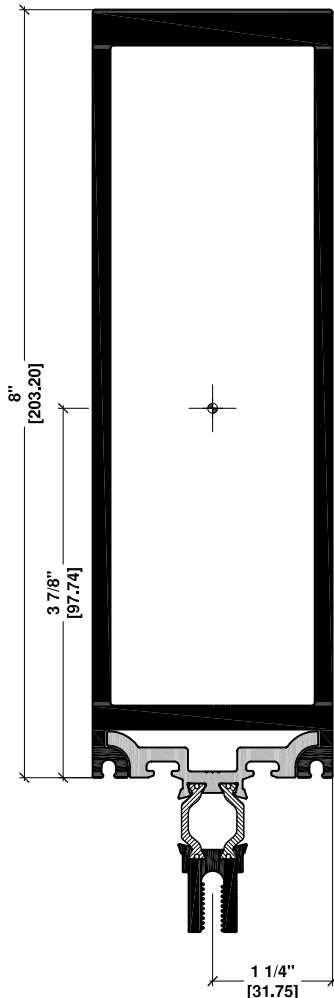
$$F = 45 \text{ psf (2.1 KPa)}$$

$$G = 50 \text{ psf (2.4 KPa)}$$

" For information purposes only "
Not for design.



8200-007 & 8200-708 MULLION
8" x 2-1/2" (203.20mm x 63.5mm)



$$A = 4.8357 \text{ IN}^2$$

$$I_x = 33,862 \text{ IN}^4$$

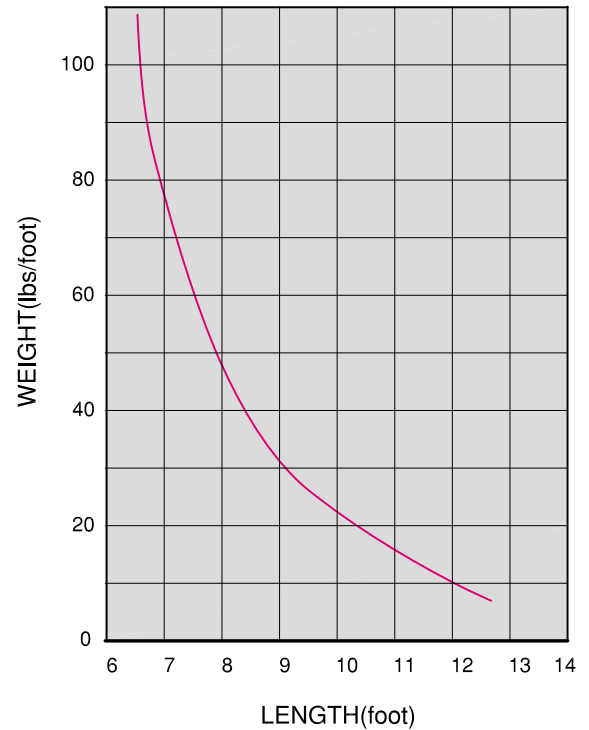
$$S_x = 7.959 \text{ IN}^3$$

- A = 20 psf (0.95 KPa)
B = 25 psf (1.2 KPa)
C = 30 psf (1.4 KPa)
D = 35 psf (1.7 KPa)
E = 40 psf (1.9 KPa)
F = 45 psf (2.1 KPa)
G = 50 psf (2.4 KPa)

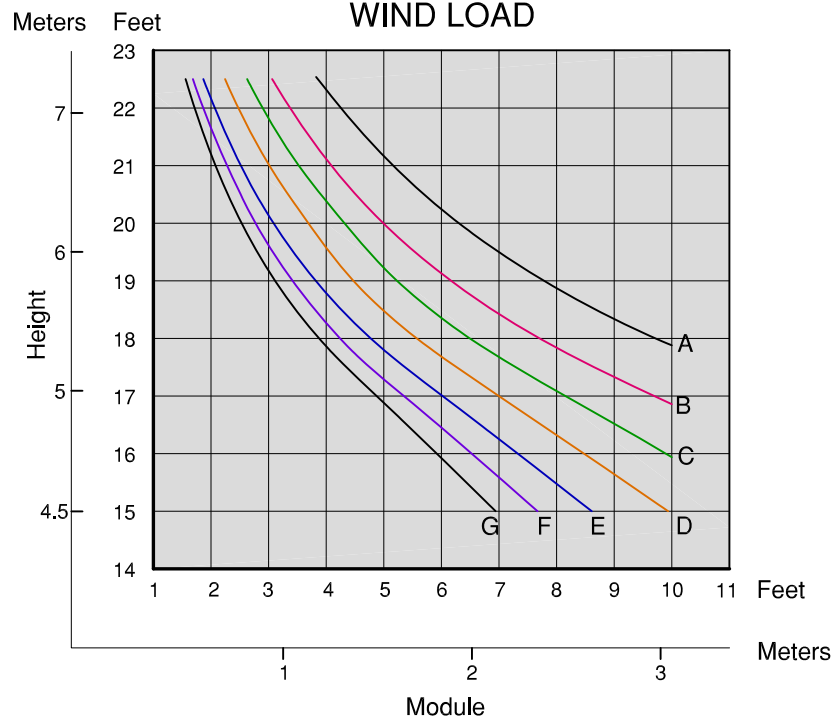
" For information purposes only "
Not for design.

Note:
Secure the neck to the mullion
using two rows of # 12 screws
spaced at 12" O.C., one row on
each side of the neck.
Countersink the heads of
screws.

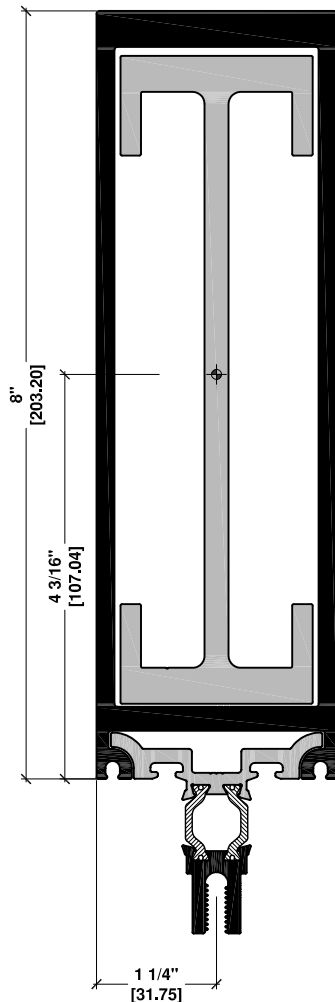
DEAD LOAD



WIND LOAD



8200-007 & 8200-708 MULLION
2 1/2" x 8" (50.8mm x 203.20mm)



Note:
Secure the neck to the mullion using two rows of # 12 screws spaced at 12" O.C., one row on each side of the neck. Countersink the heads of screws.

8200-007

$$A = 4.3553 \text{ IN}^2$$

$$I_x = 33.862 \text{ IN}^4$$

$$S_x = 7.959 \text{ IN}^3$$

8000-617

$$A = 3.565 \text{ IN}^2$$

$$I_x = 23.791 \text{ IN}^4$$

$$S_x = 7.051 \text{ IN}^3$$

Total Properties

$$A = 7.9203 \text{ IN}^2$$

$$I_x = 57.653 \text{ IN}^4$$

$$S_x = 15.010 \text{ IN}^3$$

$$A = 20 \text{ psf (0.95 KPa)}$$

$$B = 25 \text{ psf (1.2 KPa)}$$

$$C = 30 \text{ psf (1.4 KPa)}$$

$$D = 35 \text{ psf (1.7 KPa)}$$

$$E = 40 \text{ psf (1.9 KPa)}$$

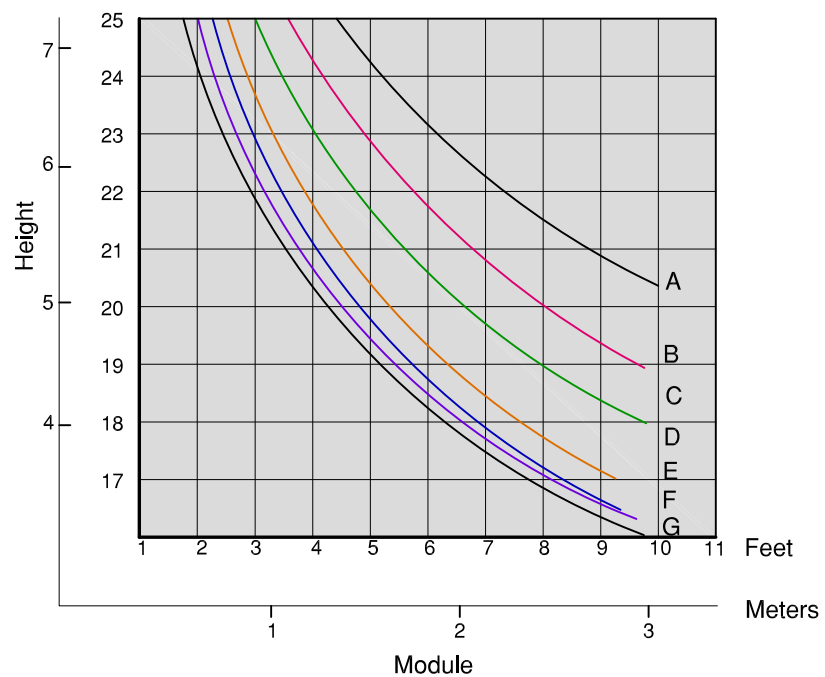
$$F = 45 \text{ psf (2.1 KPa)}$$

$$G = 50 \text{ psf (2.4 KPa)}$$

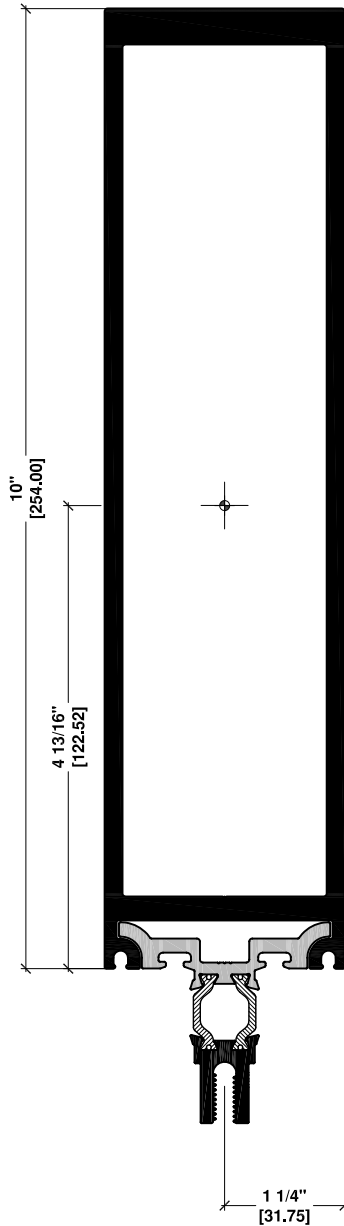
" For information purposes only "
Not for design.

Meters Feet

WIND LOAD



8000-008 & 8200-708 MULLION
10" x 2-1/2" (254mm x 63.5mm)



$$A = 5.5840 \text{ IN}^2$$

$$I_x = 60.303 \text{ IN}^4$$

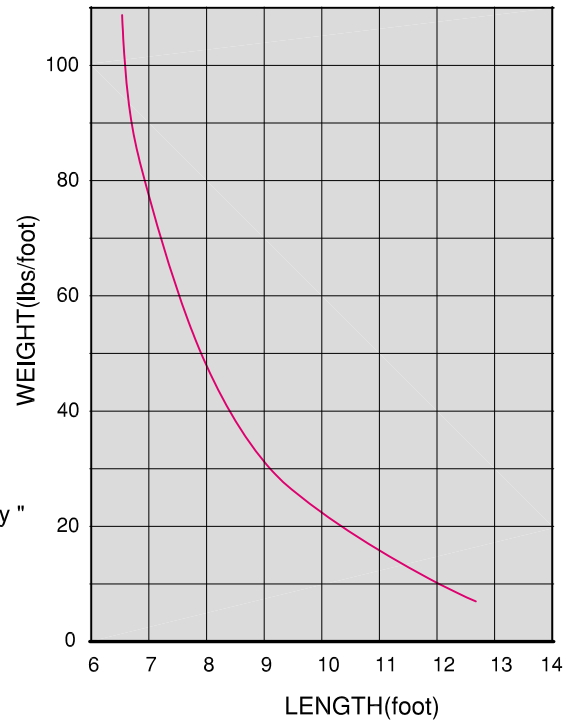
$$S_x = 11.458 \text{ IN}^3$$

- A = 20 psf (0.95 KPa)
- B = 25 psf (1.2 KPa)
- C = 30 psf (1.4 KPa)
- D = 35 psf (1.7 KPa)
- E = 40 psf (1.9 KPa)
- F = 45 psf (2.1 KPa)
- G = 50 psf (2.4 KPa)

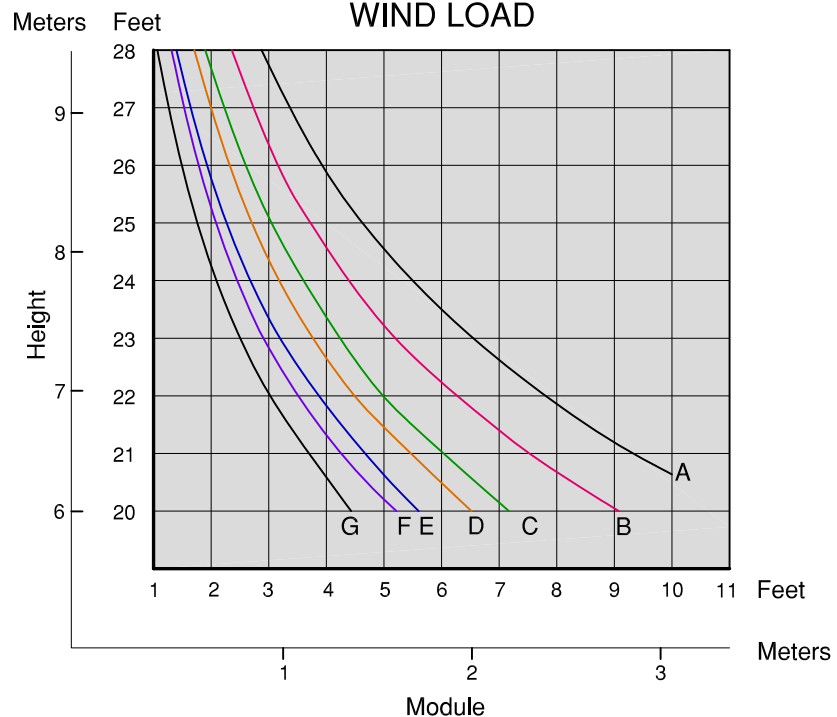
" For information purposes only "
Not for design.

Note:
Secure the neck to the mullion
using two rows of # 12 screws
spaced at 12" O.C., one row on
each side of the neck.
Countersink the heads of
screws.

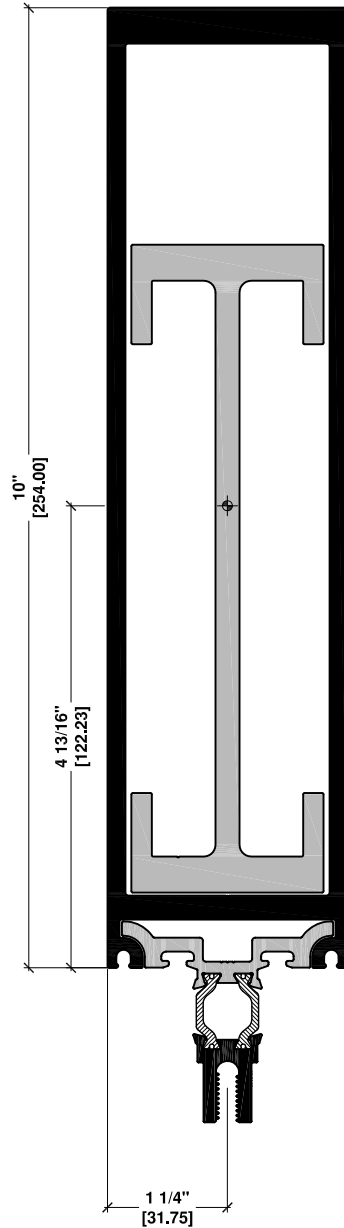
DEAD LOAD



WIND LOAD



8000-008 & 8200-708 MULLION
2 1/2" x 10" (50.8mm x 254mm)



Note:
Secure the neck to the mullion
using two rows of # 12 screws
spaced at 12" O.C., one row on
each side of the neck.
Countersink the heads of
screws.

8200-008

$$A = 5.5840 \text{ IN}^2$$

$$I_x = 60.303 \text{ IN}^4$$

$$S_x = 11.458 \text{ IN}^3$$

8000-617

$$A = 3.5651 \text{ IN}^2$$

$$I_x = 23.791 \text{ IN}^4$$

$$S_x = 7.051 \text{ IN}^3$$

Total Properties

$$A = 9.1491 \text{ IN}^2$$

$$I_x = 84.094 \text{ IN}^4$$

$$S_x = 18.509 \text{ IN}^3$$

$$A = 20 \text{ psf (0.95 KPa)}$$

$$B = 25 \text{ psf (1.2 KPa)}$$

$$C = 30 \text{ psf (1.4 KPa)}$$

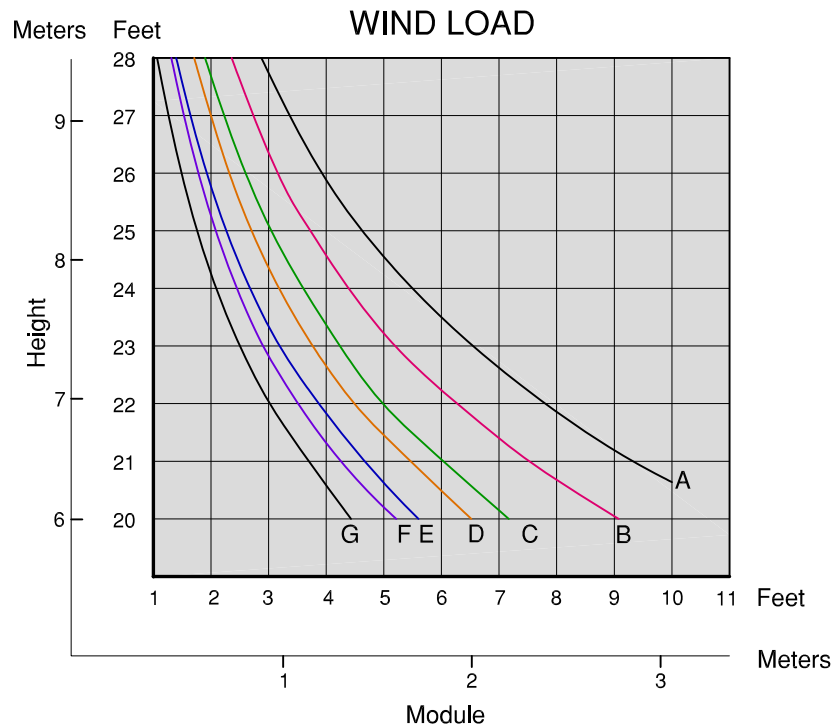
$$D = 35 \text{ psf (1.7 KPa)}$$

$$E = 40 \text{ psf (1.9 KPa)}$$

$$F = 45 \text{ psf (2.1 KPa)}$$

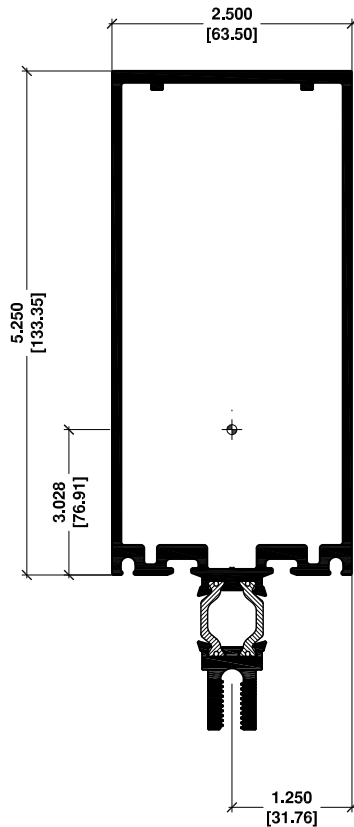
$$G = 50 \text{ psf (2.4 KPa)}$$

" For information purposes only "
Not for design.



8200-720 MULLION

5-1/4" x 2-1/2" (133.35mm x 63.5mm)



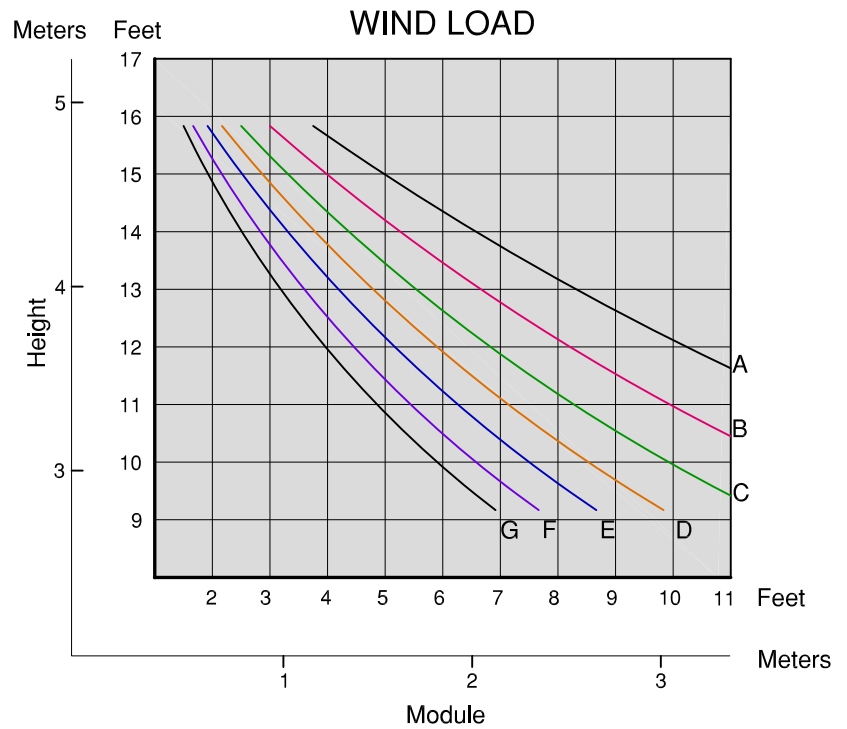
$$A = 1.8164 \text{ IN}^2$$

$$I_x = 10.545 \text{ IN}^4$$

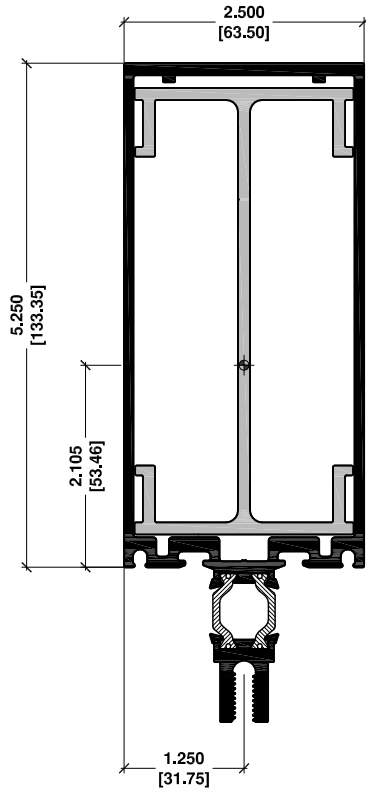
$$S_x = 2.940 \text{ IN}^3$$

A = 20 psf (0.95 KPa)
 B = 25 psf (1.2 KPa)
 C = 30 psf (1.4 KPa)
 D = 35 psf (1.7 KPa)
 E = 40 psf (1.9 KPa)
 F = 45 psf (2.1 KPa)
 G = 50 psf (2.4 KPa)

" For information purposes only "
 Not for design.



8200-720 REINFORCED MULLION
5-1/4" x 2-1/2" (133.35mm x 63.5mm)



8200-720

$$A = 1.8164 \text{ IN}^2$$

$$I_x = 10.545 \text{ IN}^4$$

$$S_x = 2.940 \text{ IN}^3$$

8000-614

$$A = 1.461 \text{ IN}^2$$

$$I_x = 4.834 \text{ IN}^4$$

$$S_x = 2.080 \text{ IN}^3$$

Total Properties

$$A = 3.277 \text{ IN}^2$$

$$I_x = 15.379 \text{ IN}^4$$

$$S_x = 5.020 \text{ IN}^3$$

$$A = 20 \text{ psf (0.95 KPa)}$$

$$B = 25 \text{ psf (1.2 KPa)}$$

$$C = 30 \text{ psf (1.4 KPa)}$$

$$D = 35 \text{ psf (1.7 KPa)}$$

$$E = 40 \text{ psf (1.9 KPa)}$$

$$F = 45 \text{ psf (2.1 KPa)}$$

$$G = 50 \text{ psf (2.4 KPa)}$$

" For information purposes only "
Not for design.

WIND LOAD

