

TECHNICAL DATA

DESCRIPTION: THERMALLY BROKEN FIXED WINDOW SYSTEM WITH FLAT FACE. OVERALL DEPTH 4" (101.6mm), 5" (127mm) & 6" (152.4mm) FRAME SECTION.

COMPATIBILITY: ACCEPTS 225 SERIES VENTS & CASEMENTS. NOT SUITABLE FOR ENTRANCE APPLICATIONS.

FINISH: MOST PROFILES ARE STOCKED IN #17 CLEAR AND #40 BRONZE ANODIZED. OTHER ANODIZED AND PAINT FINISHES ARE AVAILABLE UPON REQUEST. DIFFERENT FINISHES EXTERIOR AND INTERIOR ARE AVAILABLE.

STOCK LENGTH: 24'-2" (7.37 METERS).

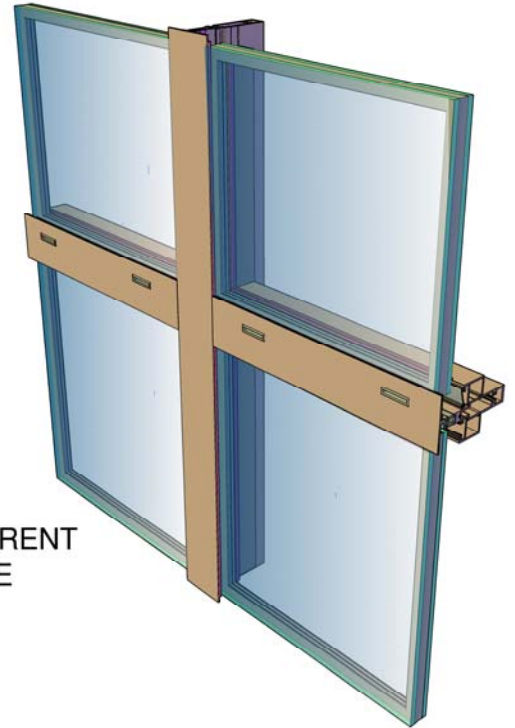
ASSEMBLY: DESIGNED FOR SCREW PORT ASSEMBLY WITH OVERLAPPED OR FLUSH CORNER JOINTS.

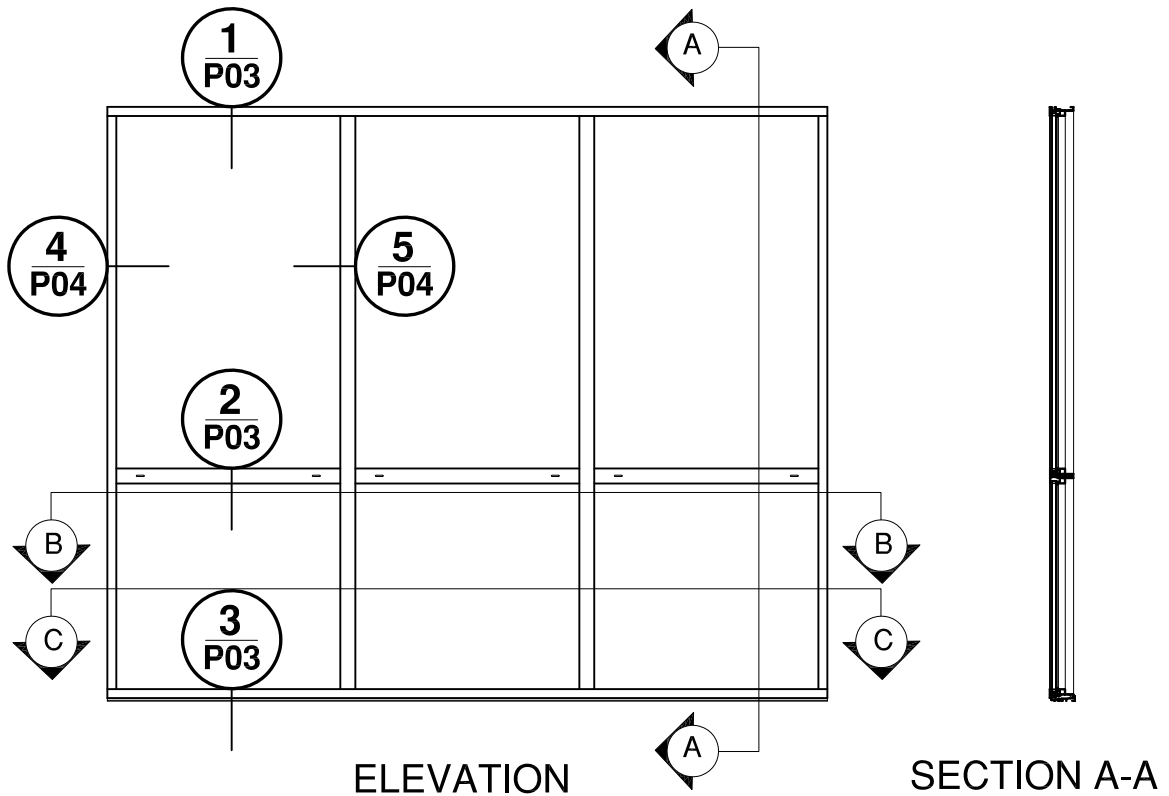
STRENGTH: REFER TO WIND LOAD CHARTS FOR MAXIMUM ALLOWABLE SPANS.

ANCHORING: REFER TO FABRICATION AND INSTALLATION MANUAL.

GLAZING: 425 SERIES IS AN INTERIOR GLAZED SYSTEM AND WILL ACCEPT 1" (25mm) SEALED UNIT GLASS AND 1-3/4" (44mm) TRIPLE GLASS UNIT.

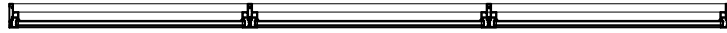
NOTE: THIS FRAMING SYSTEM IS SQUARE CUT WITH OVERLAPPED CORNERS, REQUIRED 1/8" & 3/16" SHIM TAPE AS INDICATED IN THE COMPONENT LIST.





ELEVATION

SECTION A-A



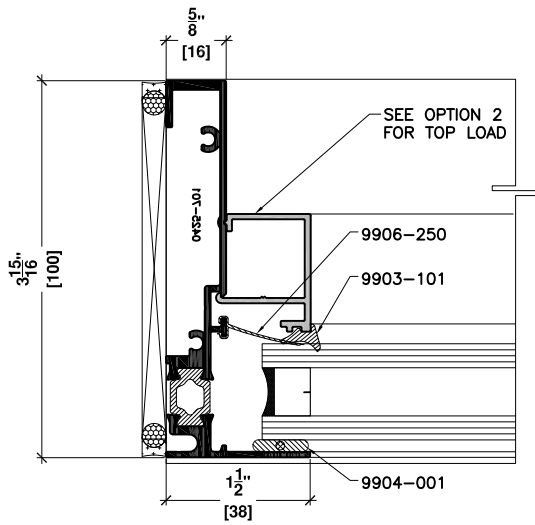
PLAN VIEW B-B



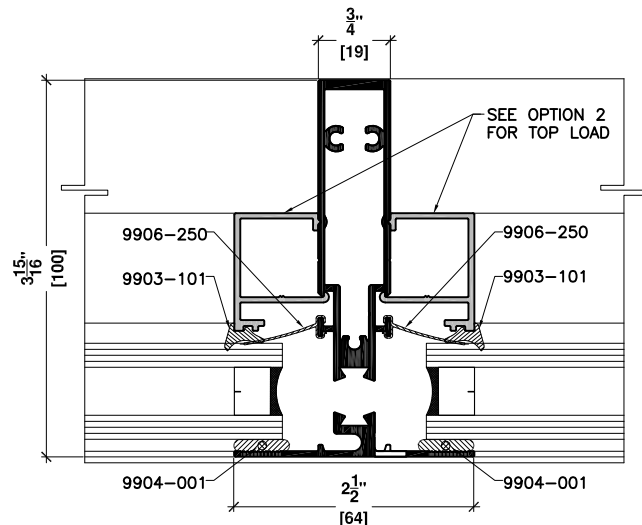
PLAN VIEW C-C

4a
P05

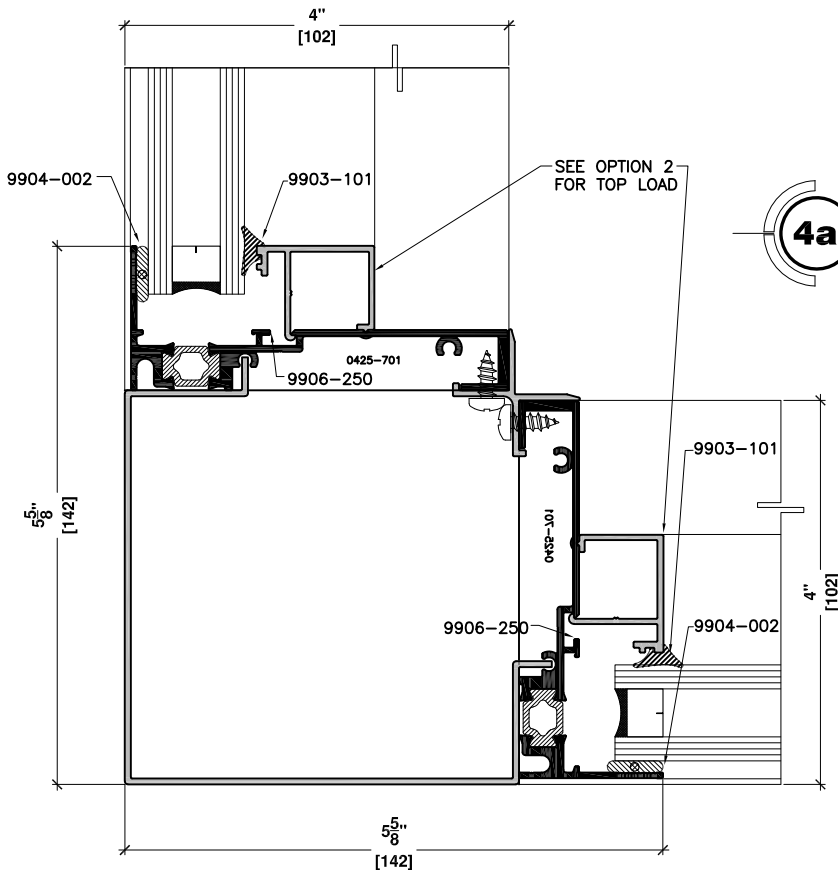
HORIZONTAL RUN THROUGH-FIXED WINDOW



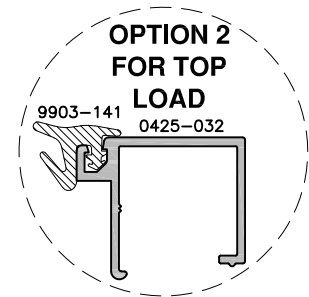
4 4' VERTICAL WITH SCREW PORT-FIXED WINDOW JAMB CONDITION



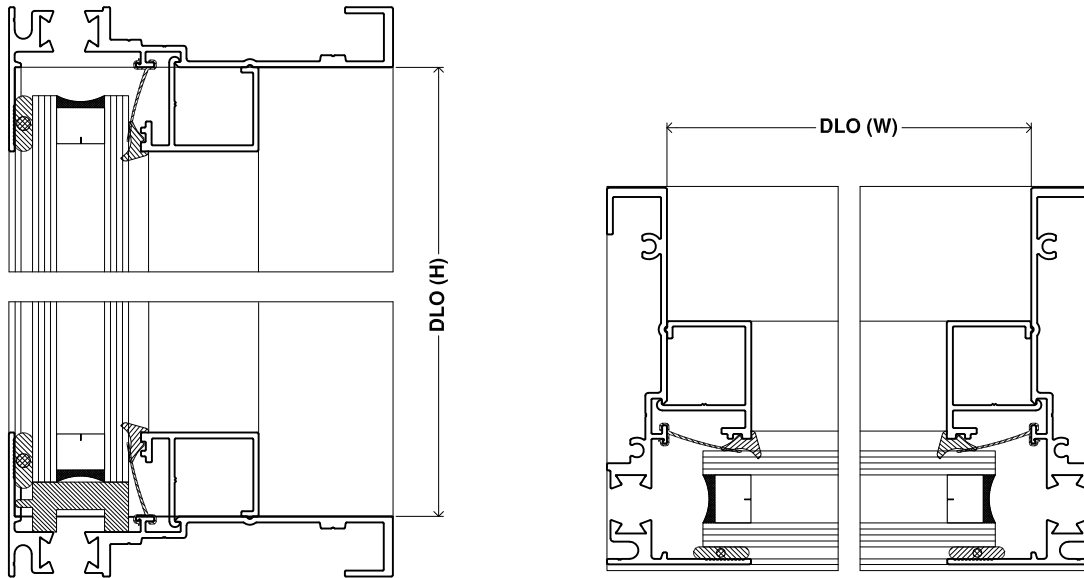
5 4' VERTICAL MULLION FIXED WINDOW-FIXED WINDOW



4a 4' VERTICAL FIXED WINDOW CORNER CONDITION



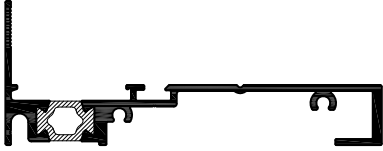
GLASS CALCULATION



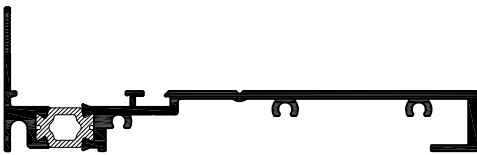
1" (25.4mm) Glass (W)= DLO(W) - 3/4"(19.05mm)

Glass (H)=DLO(H) - 3/4"(19.05mm)

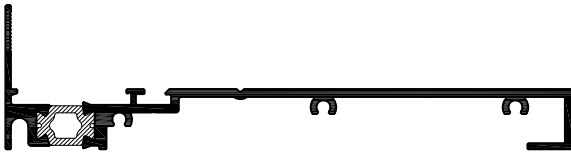
Note: use the appropriate spline



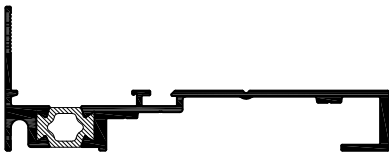
PART #: 425-701
FRAME JAMB
3 15/16" (100.012mm)
USE 1/8" GLAZING TAPE



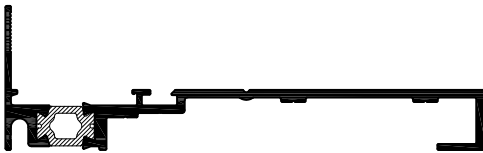
PART #: 425-702
FRAME JAMB
4 15/16" (125.4mm)
USE 1/8" GLAZING TAPE



PART #: 425-703
FRAME JAMB
5 15/16" (150.8mm)
USE 1/8" GLAZING TAPE



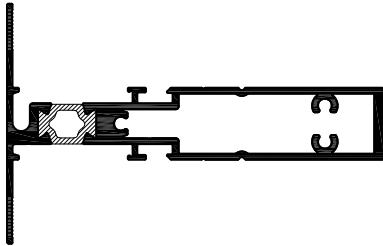
PART #: 425-705
FRAME HEAD /SILL
4" (101.6mm)
USE 3/16" GLAZING TAPE



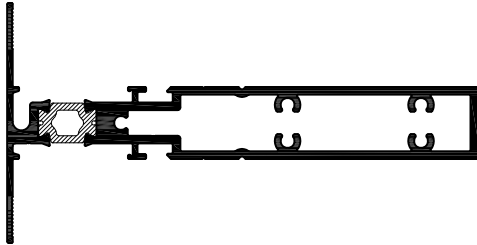
PART #: 425-706
HEAD /SILL FRAME
5" (127mm)
USE 3/16" GLAZING TAPE



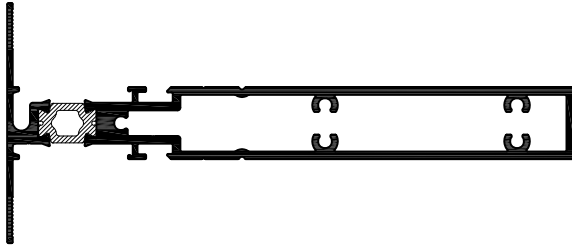
PART #: 425-707
HEAD /SILL FRAME
6" (152.4mm)
USE 3/16" GLAZING TAPE



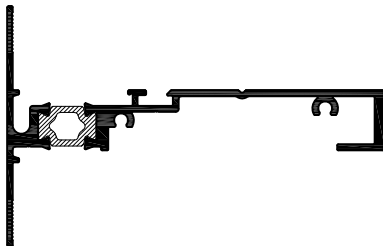
PART #: 425-710
VERTICAL/HORIZONTAL
MULLION
3 15/16" (100.012mm)
USE 1/8" GLAZING TAPE



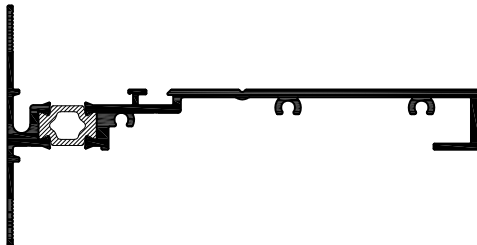
PART #: 425-711
VERTICAL/HORIZONTAL
MULLION
4 15/16" (125.4mm)
USE 1/8" GLAZING TAPE



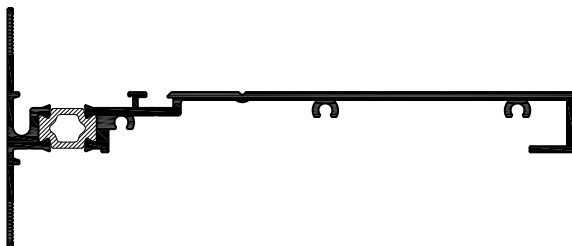
PART #: 425-712
VERTICAL/HORIZONTAL
MULLION
5 15/16" (150.8mm)
USE 1/8" GLAZING TAPE



PART #: 425-720
FRAME PERIMETER W/
MULLION FACE 3 15/16"
(100.012mm)
USE 1/8" GLAZING TAPE



PART #: 425-721
FRAME PERIMETER WITH
MULLION FACE 4 15/16"
(125.4mm)
USE 1/8" GLAZING TAPE



PART #: 425-722
FRAME PERIMETER WITH
MULLION FACE 5 15/16"
(150.8mm)
USE 1/8" GLAZING TAPE



PART #: 425-715
SPLIT MULLION FEMALE
4" (101.6mm)
USE 3/16" GLAZING TAPE



PART #: 425-040
SPLIT MULLION MALE
3" (76.2mm)
USE WITH PART (425-715)



PART #: 425-716
SPLIT MULLION FEMALE
5" (127mm)
USE 3/16" GLAZING TAPE



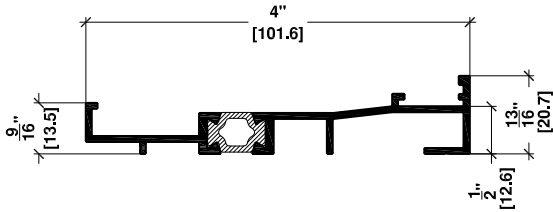
PART #: 425-042
SPLIT MULLION MALE
4" (101.6mm)
USE WITH PART (425-716)



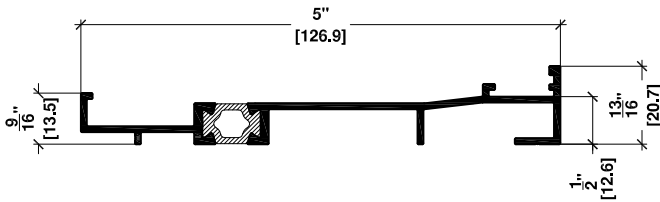
PART #: 425-717
SPLIT MULLION FEMALE
6" (152.4mm)
USE 3/16" GLAZING TAPE



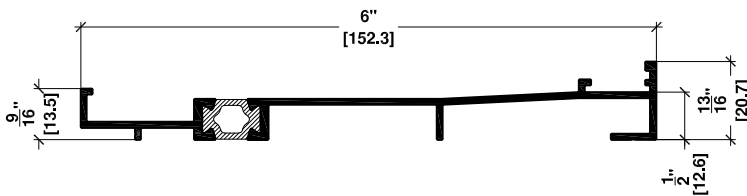
PART #: 425-044
SPLIT MULLION MALE
5" (127mm)
USE WITH PART (425-717)



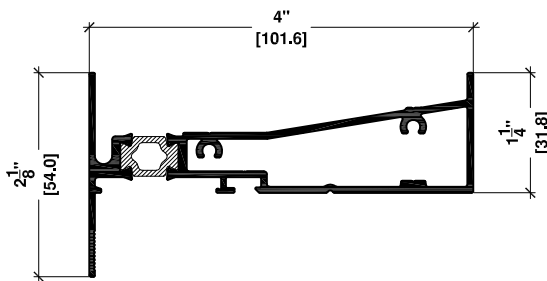
PART #: 425-730
SILL RECEPTOR
FOR 4" (101.6mm)
SECTION



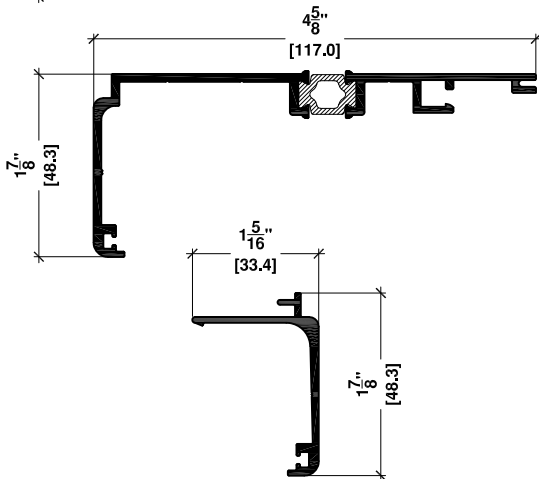
PART #: 425-731
SILL RECEPTOR
FOR 5" (127mm)
SECTION



PART #: 425-732
SILL RECEPTOR
FOR 6" (152.4mm)
SECTION



PART #: 425-750
HEADER
4" (101.6mm)
USE 3/16" GLAZING TAPE



PART #: 425-755
HEAD DEFLECTOR
USE WITH PART (2) 425-035

PART #: 425-035
HEAD DEFLECTOR FACE
USE WITH PART (2) 425-036



PART #:425-900
BRACKET REVERSIBLE
MULLION USE WITH:
[PART# 425-710](#)



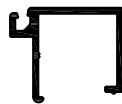
PART #:425-901
BRACKET REVERSIBLE
MULLION USE WITH:
[PART#: 425-711 & 425-712](#)



PART #: 425-030
STOP GLASS
FOR 1" (25mm)
SEALED UNIT



PART #: 425-031
GLASS STOP
FOR 1.75" (44.45mm)
TRIPLE GLASS UNIT



PART #:425-032
TOP LOAD
STOP GLASS



PART #:425-071
90° CORNER INTERIOR
FOR 4" SECTION



PART #:9906-250
AIR SEAL 425 INSTALLED
ALONG THE INSIDE
GLASS UNIT.



PART #:9903-144
BULB SEAL USED
FOR SPLIT MULLION



SOLD SEPARATELY
NOT INCLUDED IN
FABRICATED FRAMES

PART #:9904-001
1/8" POLYSHIM TAPE
SEE DETAILS FOR
APPLICATION

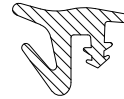


PART #:9903-108
5mm AIR SEAL
GASKET USED
FOR 425 HEAD
DEFLECTOR



SOLD SEPARATELY
NOT INCLUDED IN
FABRICATED FRAMES

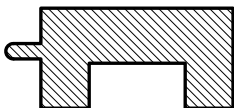
PART #:9904-002
3/16" POLYSHIM TAPE
SEE DETAILS FOR
APPLICATION



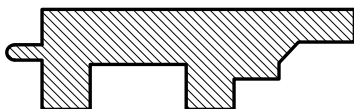
PART #:9903-141
GLAZING SPLINE
MED.





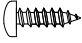
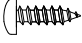
PART #:9903-101
GLAZING WEDGE
APPLY TO THE INSIDE OF
THE GLAZING CAVITY, AND
BETWEEN FRAME AND SILL
RECEPTOR DETAIL (3/P04)



PART #:9903-203
SETTING BLOCK TO
SUPPORT GLASS UNIT
2 PER DAYLIGHT OPENING



PART #:9903-204
SETTING BLOCK TO
SUPPORT TRIPLE GLASS
UNIT 2 PER DAYLIGHT
OPENING

DRAWING	DESCRIPTION	APPLICATION	QTY/ JOINT
	PART #:9902-303 #8 X 1" P.H. SCREW	TO FASTEN PLAIN SECTION TO SCREW PORT	AS REQUIRED
	PART #:9902-309 #8 X 2" P.H. SCREW	TO FASTEN BRACKET TO VERTICAL MULLION	2
	PART #:9902-400 #10 X 1/2" P.H. SCREW	TO FASTEN HORIZONTAL MULLION TO BRACKET	2
	PART #:9902-400 #10 X 1/2" P.H. SCREW	TO FASTEN 90° CORNER INTERIOR TO JAMB	AS REQUIRED

AWSF TEST RESULTS

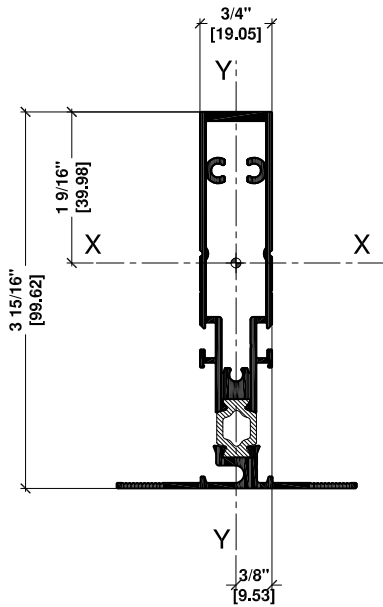
TEST	RESULTS
Air Leakage Rate Test Pressure 75 Pa (1.60 psf)	0.05 L/sec/m ² (0.01 cfm/ft ²)
Water Pressure Achieved	720 Pa (15.0 psf)
Maximum Structural Pressure Achieved	Test Pressure of 1080 Pa (22.5 psf) Positive load deflection - 3.56 mm (0.140 in) Negative load deflection - 3.96 mm (0.156 in)
Force Entry Resistance, ASTM F588, Grade 40	Pass

TEST	RESULTS
Air Leakage Rate Test Pressure 75 Pa (1.60 psf)	<0.1 L/sec/m ² (<0.01 cfm/ft ²)
Water Pressure Achieved	720 Pa (15.0 psf)
Maximum Structural Pressure Achieved	Test Pressure of 2160 Pa (45.11 psf) Positive load deflection - 1.5 mm (0.06 in) Negative load deflection - 2.0 mm (0.08 in) (Commercial Window) Test Pressure of 2880 Pa (60.15 psf) Positive load deflection - 1.5 mm (0.06 in) Negative load deflection - 1.8 mm (0.07 in) (Light Commercial)
Force Entry Resistance, ASTM F588, Grade 40	Pass

NFRC TEST RESULTS

ITEM	VALUE
Standardized U-Factor	0.32 Btu/hr-ft ² -F

4" MULLION
0425-710
3-¹⁵/₁₆" (100.0mm)

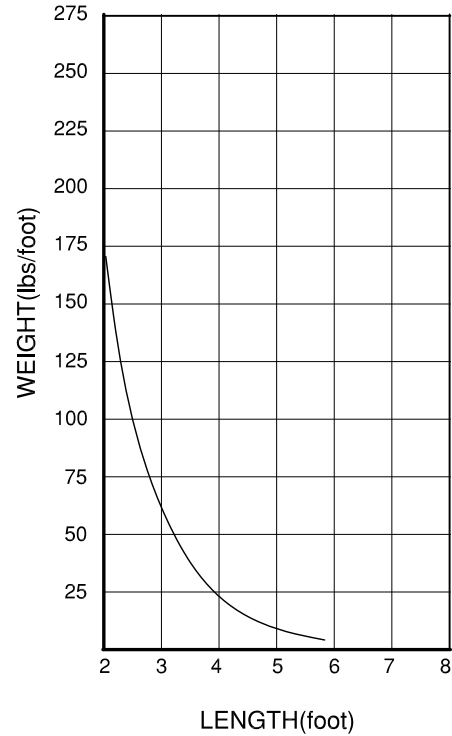


I= Moment of Inertia
S= Section Modulus
 $I_{xx} = 0.047IN^4$
 $I_{yy} = 0.0684IN^4$
 $S_{xx} = 0.125IN^3$
 $S_{yy} = 0.435IN^3$

A = 20 psf (0.95 KPa)
B = 25 psf (1.2 KPa)
C = 30 psf (1.4 KPa)
D = 35 psf (1.7 KPa)
E = 40 psf (1.9 KPa)
F = 45 psf (2.1 KPa)

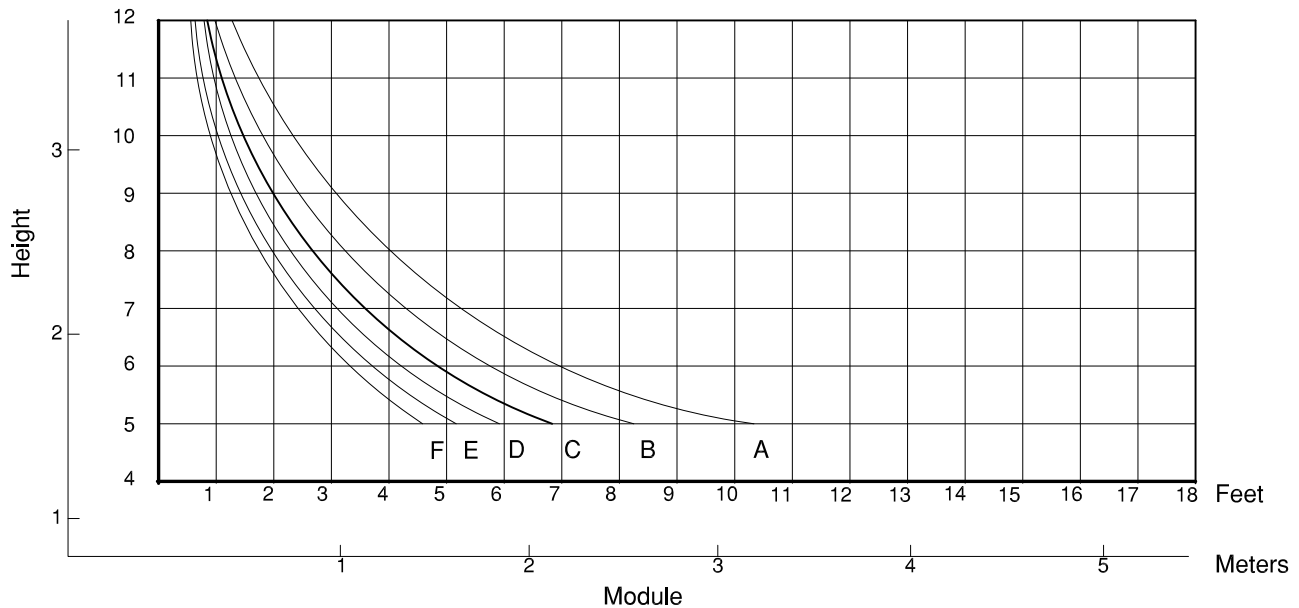
" For information purposes only "
Not for design.

DEAD LOAD



Meters Feet

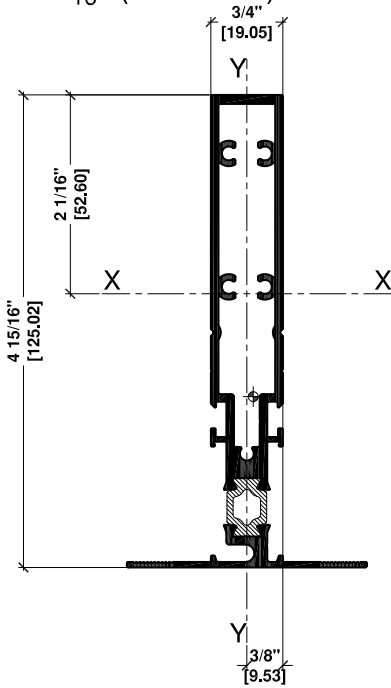
WIND LOAD



5" MULLION

0425-711

4-¹⁵/₁₆" (125.4mm)

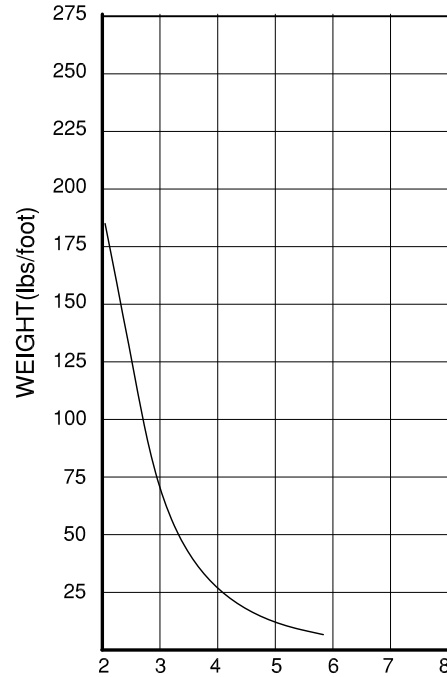


I= Moment of Inertia
S= Section Modulus
 $I_{xx} = 0.074IN^4$
 $I_{yy} = 1.598IN^4$
 $S_{xx} = 0.197IN^3$
 $S_{yy} = 0.772IN^3$

A = 20 psf (0.95 KPa)
B = 25 psf (1.2 KPa)
C = 30 psf (1.4 KPa)
D = 35 psf (1.7 KPa)
E = 40 psf (1.9 KPa)
F = 45 psf (2.1 KPa)

" For information purposes only "
Not for design.

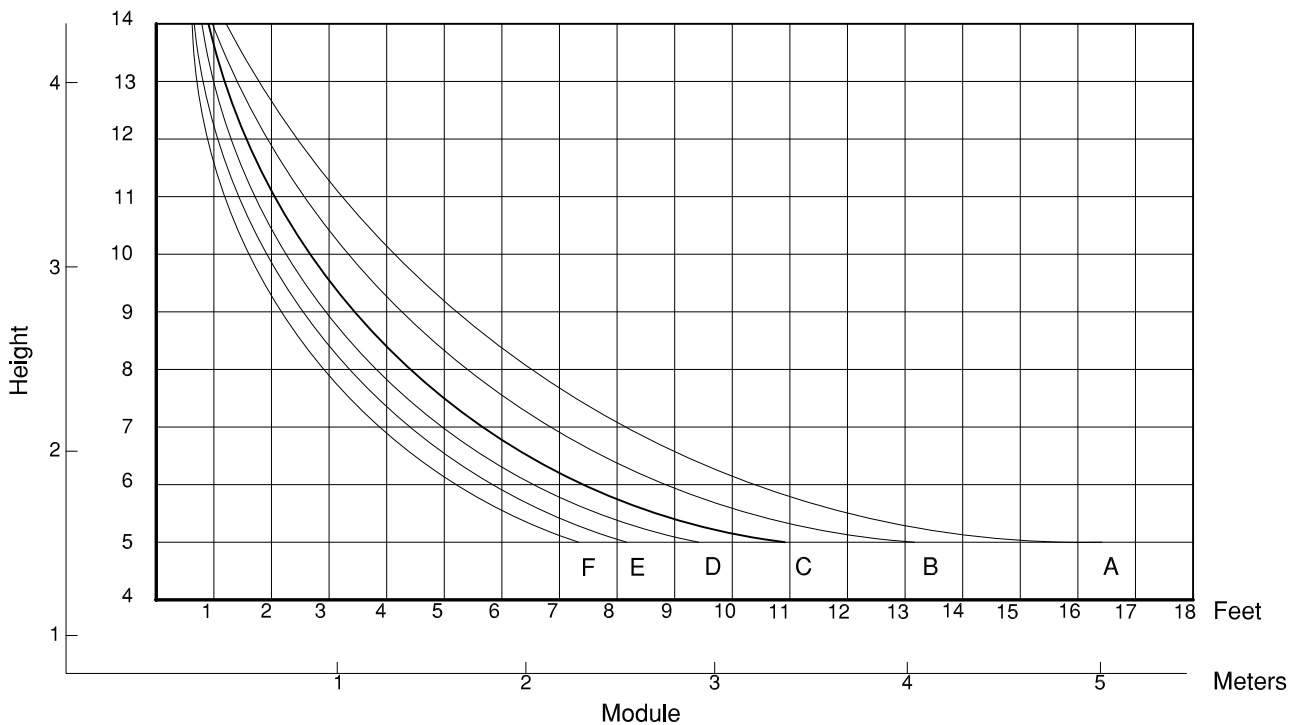
DEAD LOAD



Meters Feet

WIND LOAD

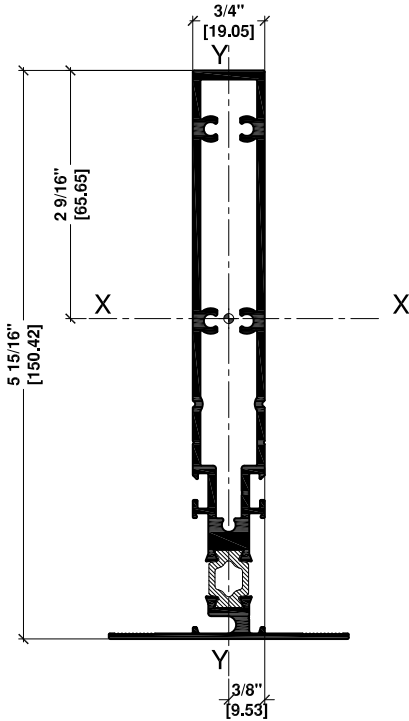
LENGTH(foot)



6" MULLION

0425-712

5-¹⁵/₁₆" (150.8mm)

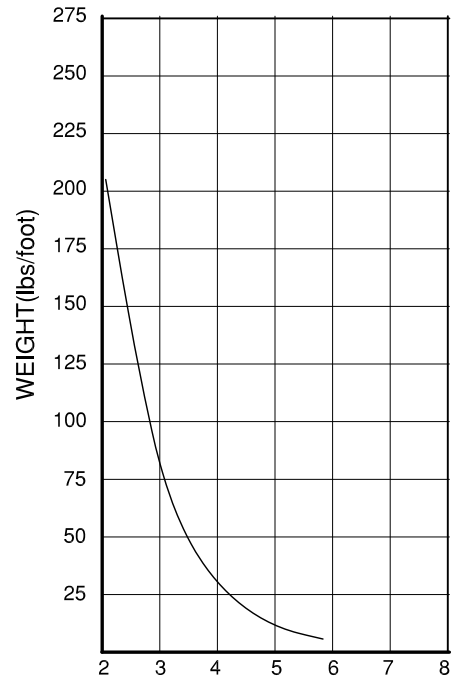


I= Moment of Inertia
S= Section Modulus
I_{xx}= 0.092IN⁴
I_{yy}= 2.906IN⁴
S_{xx}= 0.245IN³
S_{yy}= 1.124IN³

A = 20 psf (0.95 KPa)
B = 25 psf (1.2 KPa)
C = 30 psf (1.4 KPa)
D = 35 psf (1.7 KPa)
E = 40 psf (1.9 KPa)
F = 45 psf (2.1 KPa)

" For information purposes only "
Not for design.

DEAD LOAD



Meters Feet

WIND LOAD

LENGTH(foot)

